

TASMANIAN INTERNATIONAL  
**ARTS  
FEST  
IVAL**



MARCH 2015



TEN DAYS

# TWO WAYS TO SAVE: BUY EARLY! OR BUY LOTS!

BOOK BEFORE  
CHRISTMAS  
FOR A

25%

EARLY BIRD  
DISCOUNT



## BUY EARLY WITH EARLY BIRD\*

Buy your full-priced tickets to eligible events before 25 December 2014 and receive a discount of 25% (excluding booking fees).

## BUY LOTS WITH MULTI-TIX\*

Buy your full-priced tickets to 3 or more eligible events in one transaction from 25 December 2014 and receive a discount of 15% (excluding booking fees).

Book your tickets online at [tendays.org.au](http://tendays.org.au) or through participating Ten Days Ticket Outlets.

## GIFT VOUCHERS

A Ten Days Gift Voucher lets your friends and family choose their own festival adventure - whether it's an evening of drama, dance, music, cabaret, or something fun for all the family. With a Ten Days Gift Voucher your gift is guaranteed to leave them smiling long after the last curtain call. Gift Vouchers are available from the Box Office, over the phone or online.

\*See pages 56-57 for events that are not eligible for the Early Bird and Multi-Tix discounts. Discount is only applicable to full-priced tickets (no further discounts apply to concession tickets). Early Bird tickets on sale from November 13 2014 at 10am until 11.59pm December 24 2014. Multi-Tix tickets on sale from 12am December 25 2014. Early Bird ticket numbers are limited. See page 56 for Ten Days Ticket Outlet details.

# CONTENTS

Welcomes	2
----------	---

## THEATRE

Dementia 13	4
Hidden Cities	6
Watermark	7
Swamp Juice	7
Hamlet, de los Andes	8
Alzheimer Symphony	10
I Think I Can	11
The Cardinals	12
Blue Angel	14

## DANCE

Rising	16
Episodes	18
6000 to 1	19
The Body as a Riddle	20

## MUSIC

El Son Entero	22
Pasaje	23
Tan Dun's Wolf Totem	24
A Taste of Italy	26
Essentially Elgar	26
Acoustic Life of Sheds	27
Calls Across the Island	28
dirtsong	30
TYO FIVE-O Celebration Concert	32
52nd SPIRIT of INDIA	33
Tasmanian Guitar Trio - Touchdown in Kettering	33

## Spiegel tent

Spiegel tent Hobart	34
Beyond	35
La Soirée	36

## SPIEGEL SIDESHOWS

Spiegel Sideshow at the BAFC: Beyond	38
Spiegel Sideshow at the DECC: Inheritance	39
Spiegel Sideshow at the Festival Club at the Earl: Spiegel Up Close	39

## VISUAL ARTS

Reorder	41
Habits and Habitat	42
Things I once knew	42
Outside Thoughts	43
Colonial Afterlives	43
Landscape is a conversation	44
back country	44
Inside Out	45
ReViewing	45
Made in China, Australia	46
Mad women in the attic?	46
Stand Back	47
superslow	47
Paj Hoob (Flower Room) #2	47
Burnie Print Prize 2015	48
Drawing: Atmospheres of a Salient Landscape	48
Connected	48
Indeco in the Making	49
Think Big - Live Light	49
Undercurrents	49
Plato's Cave at the Earl	50
Memento mori: art, medicine and the body	50
Release Date: History, Memory, Longford	50

## AND EVEN MORE

Theatre North Fringe at the Earl	40
Theatre Royal RAWspace	40
And Another Thing...	51
The Ultimate Whisky Day Out	53
RACT Road Tripping	54
Ticketing and Accessibility	56
Venue Information	58
Staff and Supporters	59
Partnership and Philanthropy	60
Partners	62
Event Planner and Map	64

## MESSAGE FROM THE ARTS MINISTER

The Liberal Government is a strong supporter of the arts in Tasmania, and we continue to support this iconic cultural festival.

Ten Days on the Island has been a pioneer in Tasmania, paving the way for what is now a large and vibrant array of festivals and events. Importantly, the festival has evolved over a number of years and its new identity as the Tasmanian International Arts Festival clearly articulates what it has to offer audiences.

The creative industries are a significant and growing sector for the economy and Ten Days and the Tasmanian International Arts Festival play an important part in the sector. It fosters talent, provides employment, engages audiences and showcases our innovative companies and individuals in a way that helps them to pursue further opportunities. It also attracts visitors to the state, helping to grow our economy.

The Tasmanian International Arts Festival is a vehicle for highlighting Tasmanian artists to Australia and the rest of the world. It also brings the world to Tasmania, with key performances and events around the state.

Importantly, the Tasmanian International Arts Festival gives Tasmanians an opportunity for a unique cultural experience and makes Tasmania an even greater place to live.

I look forward to the Tasmanian International Arts Festival and I hope that the Festival's evolution will be a sign of an exciting future ahead.

**Dr Vanessa Goodwin, MLC**  
Minister for the Arts

## MESSAGE FROM THE CHAIRMAN

Looking back on the diversity and richness of the hundreds of wonderful performances and events which it has brought to Tasmania over the last 14 years, Ten Days has much to celebrate.

It is not entirely a coincidence that that period has also witnessed in Tasmania an unprecedented flowering of the arts in all its forms. Ten Days has made a significant contribution to creating the social and cultural climate which catalysed that renaissance.

Ten Days has never been static: each festival has been qualitatively different from the previous one and each has had its own special character and appeal. In the last two years the pace of that evolution has accelerated. Ten Days has refreshed its identity and is augmenting the main festival with a continuous program of cultural activities which was epitomised by the fabulous Spiegeltent season that enlivened the Hobart waterfront with a memorable party extending over three weekends in 2014.

Under the leadership of our new artistic director, David Malacari, the 2015 Tasmanian International Arts Festival will take Ten Days yet another step forward on its journey as it inspires and entertains us, engages our hearts and minds and reinforces Tasmania's brand as a vibrant, creative cultural centre.

The 2015 Festival should make the Tasmanian Government, our corporate partners, our philanthropic patrons and all our other supporters feel proud of the contribution they are making to Tasmania.

**Sir Guy Green**  
Chairman, Ten Days

## MESSAGE FROM THE ARTISTIC DIRECTOR

The 2015 program celebrates Tasmania and its connections to the world. These connections exist through the many cultural communities who call it 'home'; through the daily connections we have across the planet, in almost every conceivable aspect of our lives – the food we eat, the internet searches we make, the clothes we wear, the news we read; and have grown from Tasmania's position at a major vortex of the great trading routes of the southern oceans from where we have amassed a cultural cargo of immeasurable wealth. Our cultural wealth is capitalised in many ways, most visibly through the individuals whose passion and talents turn them into artists; artists who are unofficial bankers for our own, sometimes secret, creativity. Thank goodness for them, for our artists! They entertain us, they make us cry or look at ourselves differently; they hold mirrors to our sometimes surprised faces, and are our surrogates in the articulation or expression of what it means to be human. They help us to define ourselves and our society.

The 2015 Tasmanian International Arts Festival is full of beauty, laughter, tears and anger. The program is riddled with vivid passions and ambitious ideas – in dance, music, visual arts, drama and in hard-to-define combinations of these. Once again the Festival brings a unique mixture of excitement and creativity to Tasmania, offering us experiences that come direct from the heads and hearts of the extraordinary artists who have been assembled.

The Festival is a festival for all Tasmania and for all Tasmanians. It provides Tasmanians with arts experiences that all of us should expect in our cultured and modern society. The 2015 Tasmanian International Arts Festival is not only a reminder of just how diverse and interesting the world is, but also a reminder of just how diverse and interesting our own community is.

**David Malacari**  
Artistic Director, Ten Days

THEATRE

THE MOST TERRIFYING EXPERIENCE OF YOUR

LIVE LIVE  
CINEMA

# DEMENTIA 1

DO NOT SEE  
OR IF YOU HAVE



R LIFE!

MENTIA

3

THIS...ALONE,  
A WEAK HEART!

Artwork by Paul Walsh

# DEMENTIA 13

Live Live Cinema

*Totally engaging  
and entertaining.*

The National Business Review

Before *The Godfather* and *Apocalypse Now*, there was *Dementia 13*.

Revered cinema auteur Francis Ford Coppola's 1963 directorial debut *Dementia 13* is a gem of gothic horror made on a shoestring budget, with a script penned overnight then shot in nine days. This is B-Grade cinema at its very best.

New Zealand's Live Live Cinema, a crew of actors and musicians led by musical madman Leon Radojkovic and directed by Oliver Driver, perform live on stage as the film screens above them. The musicians create a rich atmospheric score that buoys the actors' captivating live performance of the script as a Foley artist creates every creeping footstep and murderous axe blow live on stage. This is better than the movies, this is cinema in 4-D!

*Created and composed by Leon Radojkovic  
Directed by Oliver Driver*

## LAUNCESTON



**Princess Theatre**

Tue 24 March, 8pm

Wed 25 March, 8pm

## HOBART



**Wrest Point Entertainment Centre**

Fri 27 March, 8pm

Sat 28 March, 8pm

Sun 29 March, 5pm

## DURATION

1 hour 30 minutes (no interval)

## TICKETS



Full \$47  
Concession \$37

## PATRON ADVICE

Film contains violence and adult themes



**AND ANOTHER THING...**

Q&A: SEE PAGE 52 FOR DETAILS

## PRESENTED BY

Ten Days by arrangement with Arts Projects Australia with support from Creative New Zealand's Touring Australia Initiative

**ARTS COUNCIL  
NEW ZEALAND TOI AOTEAROA**  
**creative nz**

Launceston performances presented in association with Theatre North  
Produced by Jumpboard Productions

## SUPPORTED BY



**FEDERAL GROUP**  
TASMANIA

## NEW ZEALAND





Image by Vanquathem

# HIDDEN CITIES

Armed with a smartphone and an open mind, dive into the unknown with *Hidden Cities*: an interactive walk through the city that will lure you into the secrets and oddities of the places and people around you.

Familiar places will transform into captivating virtual spaces, trite community will evolve into a tapestry of sub-cultures and the psyche of the city will be exposed in an unexpected way.

*Hidden Cities* is a promenade piece combining technology, performance, film and music.

This world première event will expose to you to aspects of your community, surroundings and your own behaviour that are usually kept hidden.

*Hidden Cities* is the collective work of filmmaker Lucien Simon (AU), theatre and film maker Ellenoor Bakker (NL), electronic artist Frederick Rodrigues (AU/NL), and musical director Jacob Plooi (AU/NL), and was developed with the support of Kingborough Council (AU) and the Stimuleringsfonds Creative Industry (NL).

## HOBART

**Starting Point: Frankie's Empire Coffee House**

Sat 21 March, 8pm & 10pm

Sun 22 March, 8pm

Tues 24 March, 7.30pm

Wed 25 March, 7.30pm

Thu 26 March, 8pm, 10pm & midnight

Fri 27 March, 8pm & 10pm

Sat 28 March, 8pm & 10pm

Sun 29 March, 8pm

## DURATION

1 hour

## TICKETS

Adults \$40

Concession \$30

## PATRON ADVICE

Smartphones will be provided

## PRESENTED BY

Ellenoor Bakker, Jacob Plooi,  
Frederick Rodrigues and Lucien Simon  
in association with Ten Days

## SUPPORTED BY



Developed with the support of  
Stimuleringsfonds Creative Industry  
and Kingborough Council

**creative  
industries  
fund NL**



## TASMANIA AND NETHERLANDS



Dreams of the  
past, visions  
of the future

TASMANIA



QUEENSTOWN

**Paragon Theatre**

Thu 26 March, 7.30pm

Fri 27 March, 7.30pm

Sat 28 March, 7.30pm

**DURATION**

1 hour 30 minutes (no interval)

**TICKETS**

Adults \$20

Concession \$15

**PRESENTED BY**

Queenstown Heritage and Arts Festival  
and Neil Cameron in association with  
Ten Days

Watermark is assisted through Arts  
Tasmania by the Minister for the Arts



SUPPORTED BY

**Tasmanian  
Government**

**SUPPORTED BY**



**WE MINE FOR  
PROGRESS**

# WATERMARK

Beneath the day-to-day life of every community lie imprints of people's histories; dreams that they once held, stories they once told. Like a faint watermark on a beautiful piece of paper, they resound with meaning and mystery. These imprints of the past can produce visions of new futures, empowering people to rebuild their lives. Queenstown has been through severe difficulties and it is through the vision of theatre and the power of music that local people can express their determination to reconstruct their town.

*Watermark* will be developed by local people, supported by a team of experienced theatre workers, who will use the watermarks of the past to see what futures lie ahead. Created by nationally renowned theatre director Neil Cameron, the performance will use music, shadow puppets, songs, stories and strong visual images to bring together the peoples' fighting spirit.



## SWAMP JUICE

Bunk Puppets

*Swamp Juice* is a playful puppet experience for all ages. A delightful and simple story about one man's romp through a swamp and the characters he finds: a pair of bickering snails, a mouse teasing a snake and a bird feeding its chick. The action builds

until the cast leap off the stage and the audience is immersed in the action; shadows zip around the walls and ceiling, exploding in an unforgettable 3D experience.

*Swamp Juice* is the second production from acclaimed performer, Jeff Achtem (Bunk Puppets). With recycled materials, Jeff creates intricate and funny stories using shadow puppetry performed in front of the screen, giving the audience a peek at how each silhouette is made.

FLINDERS ISLAND

Flinders Island Arts &  
Entertainment Centre

Fri 20 March, 7pm



KING ISLAND

King Island District High School  
Art Complex

Mon 23 March, 7pm



MOONAH

Moonah Arts Centre

Wed 25 March, 7pm



SWANSEA

Swansea Town Hall

Thu 26 March, 7pm



ST HELENS

Portland Memorial Hall

Fri 27 March, 7pm



DELORAINÉ

Little Theatre

Sat 28 March, 7.30pm

**DURATION**

55 minutes

**TICKETS**

Adult \$25

Child \$10

Concession \$20

Family of 4 \$55

**PATRON ADVICE**

All ages

**BROUGHT TO YOU BY**

Regional Arts Victoria

AUSTRALIA



# HAMLET, DE LOS ANDES

Teatro de los Andes

Teatro de los Andes, one of Latin America's finest companies, combines Bolivian music and traditional theatre forms to create a powerful evening of contemporary theatre.

This raw and gripping reinterpretation of *Hamlet* is recreated in present-day Bolivia; the cast stripped back to three actors, the stage design minimal. The setting is exotic but the central themes of Shakespeare's work are familiar – betrayal, corruption, revenge.

This provocative performance explores the politicised journey thousands of Bolivians are compelled to make each year; leaving their rural homes to seek out opportunity in the city.

Devised by Teatro de los Andes

Directed by Diego Aramburo and Teatro de los Andes

*This production fizzles with inventiveness both in its interpretation and in its staging.*

Civilian Theatre

## HOBART



### Theatre Royal

Fri 20 March, 7.30pm  
Sat 21 March, 7.30pm  
Sun 22 March, 5pm  
Mon 23 March, 7.30pm

## BURNIE



### Burnie Arts & Function Centre – Arts Theatre

Thu 26 March, 8pm  
Fri 27 March, 8pm

## DURATION

1 hour 20 minutes (no interval)

## PATRON ADVICE

Spanish language with English surtitles  
Ages 14+

## TICKETS



### Hobart

Stalls and Dress Circle  
Premium \$77  
A Reserve \$67  
B Reserve \$52  
C Reserve \$42  
B Reserve Concession \$42

### Burnie

Full \$67  
Concession \$42

## BOLIVIA



## SUPPORTED BY



Image by Sandra Sea







Image by Wolfgang Kalal

# ALZHEIMER SYMPHONY

Tasmania Performs

During a performance of Shakespeare's *King Lear*, a renowned elderly actor forgets his lines. This is the beginning of his journey into the long twilight that is Alzheimer's. As his memory fades, occurrences that would once have been shocking – such as finding a sock in his soup – are no longer questioned. His reduced living space is modified with numerous contraptions to meet his needs: pop up kitchen, shower, sports field and library. Although valiantly fighting, he succumbs to his fate and as thought slips away, feelings grow stronger and his inner child is revived.

Performed by acclaimed Tasmanian artist Justus Neumann, this poignant work is punctuated by moments of genuine light-heartedness and humour that will take the audience on a rewarding and insightful emotional journey.

*...a poetic and infinitely inventive meditation on the final stages of aging. It is also a masterful piece of theatre making.*

Michael McLaughlin, the Mercury

Written by Justus Neumann and Hans Peter Horner  
Original Music by Julius Schwing  
Designed by Greg Methe



**AND ANOTHER THING...**  
MEET & GREET. SEE PAGE 52 FOR DETAILS

BRUNY ISLAND  
Adventure Bay Hall  
Sat 21 March, 7.30pm



HUONVILLE  
Huonville Town Hall  
Sun 22 March, 7.30pm



KEMPTON  
Kempton Memorial Hall  
Tue 24 March, 7.30pm



DELORAIN  
Little Theatre  
Wed 25 March, 7.30pm



DEVONPORT  
Town Hall Theatre  
Thu 26 March, 7.30pm



SWANSEA  
Swansea Town Hall  
Sat 28 March, 7.30pm



DURATION  
1 hour 5 minutes (no interval)

TICKETS  Multi-Tix  
Adult \$30  
Concession \$25

PATRON ADVICE  
Ages 14+

ADDITIONAL INFORMATION  
Tasmania Performs presents  
*Alzheimer Symphony* at the Theatre  
Royal Backspace 5-14 February 2015.  
For further details and booking information  
go to [www.theatreroyal.com.au](http://www.theatreroyal.com.au)

SUPPORTED BY



With support from Community  
Partner Alzheimer's Tasmania  
Produced with support from Arts  
Tasmania and Wien Kultur



With venue support from Kingborough,  
Huon Valley, Southern Midlands,  
Meander Valley, Devonport and  
Glamorgan Spring Bay Councils  
Produced by Tasmania Performs

TASMANIA





Image by Harley Stumm

# I THINK I CAN

Terrapin Puppet Theatre

*"Who would you like to be today?"*

Tasmania's Terrapin Puppet Theatre's beguiling interactive artwork *I Think I Can* invites the audience to inhabit a delightful miniature town and become active members of the tiny community.

After completing a playful 'Career Test' to personality-match you with a puppet, a tiny alter-ego is yours to be steered through daily life. You will make decisions for, and undertake tasks with, your character as the puppetry is displayed on screens surrounding the installation. As more audience members join in, the community grows. The townsfolk's antics and adventures are shared with the world via an online newspaper.

City of Hobart presents *I Think I Can* in Elizabeth Mall in the heart of town, where it will capture commuters and the community alike. In Burnie, the work will be displayed within the community hub of the Burnie Arts & Function Centre.

*A charmingly optimistic exploration of responsibility, community and place.*

ABC News

This appealing artwork lightheartedly examines what it means to be a part of an engaged community.

Created by Sam Routledge and Martyn Coutts



**AND ANOTHER THING...**  
SCHOOLS. SEE PAGE 52 FOR DETAILS

TASMANIA



HOBART



**Elizabeth Mall**

Fri 20 March, 10am-1pm (schools) & 5pm-8pm  
Sat 21 March, 10am-1pm & 2pm-5pm  
Sun 22 March, 10am-1pm & 2pm-5pm  
Mon 23 March, 10am-1pm (schools) & 2pm-5pm

BURNIE



**Burnie Arts & Function Centre – Back Gallery**

Fri 27 March, 10am-1pm (schools) & 5pm-8pm  
Sat 28 March, 10am-1pm & 2pm-5pm  
Sun 29 March, 10am-1pm & 2pm-5pm

TICKETS

Free event

PRESENTED BY

Hobart performances presented by Ten Days in partnership with City of Hobart

Burnie performances presented in association with Burnie Arts & Function Centre

*I Think I Can* is presented in association with Junction Arts Festival and Queenstown Heritage and Arts Festival

SUPPORTED BY

Jin-Ganag-Dyhana Wang Xi De Foundation Inc.



Terrapin Puppet Theatre and the presentation of *I Think I Can* are assisted by the Australian Government through the Australia Council, its arts funding and advisory body, and through Arts Tasmania by the Minister for the Arts



Originally produced by Intimate Spectacle and created in association with The Australian Model Railway Association, Glen Iris, Victoria



# THE CARDINALS

Stan's Cafe Theatre Company

*A company of real artistic innovators who always have new things to say and new ways of saying them...*

Lyn Gardner, The Guardian

Three cardinals are here to perform for you an elaborately decorative puppet show depicting the most recognisable tales from the Bible. However their puppets have gone missing, so the cardinals are left with no choice but to step in and act out the stories themselves on the puppets' tiny stage.

A visual feast that examines the various meanings of belief, this wry and reflective performance never preaches. *The Cardinals* is a thoughtful and questioning theatrical work that provokes without offending.

Directed by James Yarker

## UNITED KINGDOM



### LAUNCESTON

St John's Anglican Church

Thu 19 March, 7pm

Fri 20 March, 7pm

Sat 21 March, 7pm



### HOBART

St David's Cathedral

Wed 25 March, 7.30pm

Thu 26 March, 7.30pm

Fri 27 March, 7.30pm

Sat 28 March, 7.30pm



## DURATION

1 hour 40 minutes (no interval)

## TICKETS

Premium \$52

A Reserve \$42

A Reserve \$37

Concession \$37



## COMMISSIONED BY

Commissioned by Domaine d'O and Warwick Arts Centre. Supported by Birmingham City Council and Arts Council England

## SUPPORTED BY



**AND ANOTHER THING...**

Q&A: SEE PAGE 52 FOR DETAILS

Image by Graeme Braidwood







# BLUE ANGEL

Big hART Inc.

If hotel walls could talk, then Hobart's iconic Astor Hotel would have many a seafarer's secret to tell; whispered to lovers or strangers or wives over whisky for decades. Tales of the sea – exotic, erotic and despot.

Madame Astor invites you to immerse yourself in Big hART's *Blue Angel* project. Dive in and book a bed to stay overnight for the full show experience. Explore, watch, listen, eat, sleep and dream in one of her twenty-three rooms as this performance piece unfolds from dusk to dawn. Drown yourself in music, sound design, installation, video, art, homebrew, shoeshine, beards, tattoos, Old Spice and rope splicing as *Blue Angel* brings this haunt for lovers and seafarers alive through a unique performance experience. If you already have a safe berth for the night, visit for the evening and enjoy a boutique concert version with seafarers and performers.

Big hART has been importing and exporting tall tales and true from port cities in this collaborative project where art is the cargo and the heart is filled with the desire for 'fair transport'.

Come and join a crew of real seafarers, who will appear alongside some of the country's best actors and musicians.

*Blue Angel* will feature new work from world renowned film maker Peter Greenaway.

With Kerry Armstrong and Mikelangelo  
Writer & Director: Scott Rankin  
Creative Producer: Cecily Hardy  
Production Designer: Genevieve Dugard

## HOBART

### Astor Hotel

Tues 24 – Sun 29 March  
Overnight guests: check in at 5.15pm  
Concert start time 8.30pm

## DURATION

Overnight *Blue Angel* Experience:  
From check in until check out 10am the next day  
Concert: 2 hours

## TICKETS

### Concert only

Adult \$59  
Concession \$47

### Overnight *Blue Angel* Experience

Tickets from \$270\* single occupancy  
Includes: *Blue Angel* concert, accommodation for one person for one night with gourmet dinner and breakfast, plus the *Blue Angel* experience continues overnight

**Extra guest** \$150 per extra person per room (availability subject to room occupancy), includes *Blue Angel* concert, dinner and breakfast  
This event is excluded from the early bird discount

\*Price dependent on room type  
Please check [tendays.org.au](http://tendays.org.au) for full list room options and prices. No concession available

## PATRON ADVICE

Comfortable footwear is essential  
Information for Overnight *Blue Angel* Experience guests is available on booking and further information will be provided prior to performance

Recommended age restriction of 15yrs+  
May contain adult themes and strong language

For details of wheelchair access please contact the Ten Days Box Office

## PRESENTED BY

Presented by Ten Days and Big hART

## SUPPORTED BY

  
**PHILOS  
PATRONS**

## World premiere season

The *Blue Angel* project has been assisted by the Australian Government's Major Festivals Initiative, managed by the Australia Council, its arts funding and advisory body, in association with the Confederation of Australian International Arts Festivals, Ten Days, Adelaide Festival, Big hART Inc. and Melbourne Festival

Big hART Inc *Blue Angel* project was assisted through Australia Council for the Arts, Arts New South Wales, and Arts Tasmania by the Minister for the Arts

The *Blue Angel* project has been supported by the Australian Maritime Safety Authority, Maritime Union of Australia, Coins Foundation, the City of Melbourne and the City of Hobart



**Tasmanian  
Government**



**Trade &  
Investment  
Arts NSW**



**Australian Government  
Australian Maritime Safety Authority**

## TASMANIA



Image taken by Brett Boardman. Photo treated by Wah, featuring seafarer Peter Heagney

# RISING

Aakash Odedra Company

*Rising* is an elegant and powerful contemporary dance work by award-winning British dancer Aakash Odedra. Performed with grace and passion, *Rising* is a beautiful reflection of sound, movement and spirit.

A protégé of international dance sensation Akram Khan, Odedra is inspired by South Asian classical dance and the disciplines of Kathak, interpreted in an innovative and accessible style.

*Rising* contains four solo dances, three of which were developed for Odedra by internationally acclaimed contemporary dance choreographers Akram Khan, Russell Maliphant and Sidi Larbi Cherkaoui alongside an astounding piece created by Odedra himself.

*Nritta* Choreographed and with music arranged by Aakash Odedra

*In the Shadow of Man* Choreographed by Akram Khan

*CUT* Choreographed by Russell Maliphant

*Constellation* Choreographed by Sidi Larbi Cherkaoui

Astonishing young dancer Aakash Odedra is something to behold...a marvellously conceived and well-executed show.

Dancing Review, UK

## LAUNCESTON



### Princess Theatre

Fri 20 March, 8pm

Sat 21 March, 8pm

## HOBART



### Theatre Royal

Thu 26 March, 7.30pm

Fri 27 March, 7.30pm

Sat 28 March, 7.30pm

Sun 29 March, 5pm

## DURATION

1 hour 15 minutes (inc interval)

## TICKETS



### Launceston

Full \$52

Concession \$47

### Hobart

Stalls and Dress Circle

Premium \$52

A Reserve \$47

B Reserve \$42

C Reserve \$37

B Reserve

Concession \$37

UNITED KINGDOM



## SUPPORTED BY



## COMMISSIONED BY

AKCT, Eastman, Russell Maliphant Company, DanceXchange, Sampad, The Hat Factory, Leicester, Leicestershire and Rutland Dance, South East Dance, New Art Exchange, The Place, Curve Theatre Leicester, Southbank Centre and supported by the Arts Council England and Akademi



## AND ANOTHER THING...

MASTERCLASS & WORKSHOP. SEE PAGES 51 & 52 FOR DETAILS.

Image by Chris Nash



## TASMANIA



## ST HELENS

Portland Memorial Hall

Fri 20 March, 7pm



## BRIDPORT

Bridport Community Hall

Sat 21 March, 7pm



## GEORGE TOWN

George Town Memorial Hall

Mon 23 March, 7pm



## ULVERSTONE

Gnomon Pavilion

Tues 24 March, 7pm



## STANLEY

Stanley Town Hall

Wed 25 March, 7pm



## MOONAH

Moonah Arts Centre

Fri 27 March, 7pm

Sat 28 March, 7pm



## DURATION

1 hour 10 minutes (no interval)

## TICKETS

Adult	\$25
Concession	\$18
Child	\$10

## PATRON ADVICE

Suitable for audiences of all ages. Please enjoy a chat with the performers after each show. They love a good gossip!

## PRESENTED BY

MADE in association with Ten Days  
Venue support from Break O'Day,  
Dorset, Central Coast, Circular Head  
and Glenorchy Councils  
MADE acknowledges the support over  
the past 10 years of Arts Tasmania,  
Tasmania Performs, Tasmanian Regional  
Arts, City of Hobart and the Australia  
Council for the Arts

Tasmanian Regional



Australian Government

Tasmanian  
Government

**AND ANOTHER THING...**  
WORKSHOP. SEE PAGE 52 FOR DETAILS

Performance images supplied by MADE



# EPISODES

MADE (Mature Artists Dance Experience)

Revel in ten years of creative choreography by Glen Murray, featured in EPISODES from Mature Artists Dance Experience (MADE).

Under the artistic direction of Murray, this unique Tasmanian dance theatre company has produced twelve works and performed to audiences of all ages across Australia. MADE has presented its works in many unusual locations: shop windows, balconies, and even with performers in large birds' nests.

Interpreting personal and community stories through dance, installation and collaboration

with a wide range of artists, MADE is renowned for beautiful, quirky performances, a clever twist on a Tasmanian aesthetic and an honest connection with audiences.

This exuberant retrospective, restaged by Annette Downs, includes excerpts from *Sing For Me*, karaoke with a twist; *Fair*, Ride of the Valkyries explored with brooms; the spiced-up country and western flavour of *Southwest*; and *Economy*, a seated slow foxtrot performed by paper bags with legs.

Choreography: Glen Murray  
Restaging and Dramaturgy: Annette Downs  
Design: Nicole Robson



Image by Ross Paxman

# 6000 TO 1

Stompin

Come all-in with Stompin as they explore the anatomy of choice and chance in *6000 to 1*.

Using dance, video and sound, this performative journey will analyse a variety of high-stakes scenarios curated by young Tasmanians. *6000 to 1*, a reference to Tasmania's youth suicide statistics, uses the metaphor of a casino and manipulates the concept of time to explore the impact and importance of the choices we make. Place a bet with Stompin and experience the repercussions of real-life situations in a showdown with the notions of luck, chance, fate and choice.

Stompin creates an environment in which young people grow, as individuals and as citizens, through their connection with dance. Based in Launceston and unique to Australia, Stompin's performance culture unites non-professional dancers with professional artists to create and present signature works in ordinary and extraordinary places.

Emma Porteus – Director/Choreographer  
Martyn Coutts – Dramaturge/multimedia artist

Stompin's strength as a contemporary dance troupe is in creating transformative experiences for dancers and audiences alike.

Wendy Newton

## TASMANIA



## LAUNCESTON



### Sawtooth ARI

Wed 25 March, 7.30pm  
Thu 26 March, 7.30pm  
Fri 27 March, 7.30pm  
Sat 28 March, 7.30pm  
Sun 29 March, 7.30pm

### DURATION

1 hour 10 minutes (no interval)

### TICKETS

Adult	\$20
Concession	\$15

### PRESENTED BY

Stompin in association with Ten Days

### SUPPORTED BY

City of Launceston, WD Booth, the Australian Government and Australia Council for the Arts, Tasmanian Regional Arts



**City of  
LAUNCESTON**



Australian Government



Tasmanian Regional Arts



Image by Jen Brown

# THE BODY AS A RIDDLE

Tasdance

Part dance, part theatre, part participation, *The Body as a Riddle* sees award-winning Portuguese choreographer, Madalena Victorino, and dance artist Marta Silva expertly engage audiences through unexpected events and by invigorating public spaces. Accompanying each unique experience is an exhibition of images and *choreographic letters* that provide an exposé on the journey from original concept to performance reality.

Using the exhibition as a creative starting point, Victorino utilises the skills of Tasmania's very own Tasdance ensemble to develop a series of interactive solo, duet and group scenarios which intersect with audiences.

A companion project to *The Body as a Riddle* is *Our 'Hood, Our People*, a community arts project created in partnership between the Northern Suburbs Community Centre, Tasdance and Ten Days, led by Portuguese creative artists, Madalena Victorino and Marta Silva.

## LAUNCESTON

Harvest Launceston Community Farmers' Market  
Sat 21 March, 9am-12pm



## MOONAH

Moonah Taste of the World Festival  
Sun 29 March, 12pm-3pm



## TICKETS

Free event

## PRESENTED BY

Tasdance in association with Ten Days, Harvest Launceston Market and Glenorchy City Council

## SUPPORTED BY

This project has been assisted by the Australian Government through the Australia Council, its arts funding and advisory body



**AND ANOTHER THING...**  
PROGRAM. SEE PAGE 53 FOR DETAILS



See El Son Entero perform at 5pm



Seafest is an annual community gathering that transforms the Triabunna Marina into a revelry of all things maritime. Friends and families congregate to mess about in boats, savour the *fruits de mer* and relax.

Triabunna and Swansea boast a surprising and rewarding friendship with Cuba that will be celebrated by Seafest 2015 as the *Cuban Musical Connection*. Triabunna and Swansea locals have donated Tasmanian tonewood to Cuban luthiers and musical instruments to Cuban school children since 2011. East Coast and Cuban youths have exchanged artworks and East Coast schoolchildren have made a recording in Spanish.

On their first-ever international tour, renowned Cuban band, El Son Entero, perform their blistering rhythms and infectious grooves in Triabunna to headline the Seafest music line up.

Live music, sumptuous seafood and fascinating marine and coastal exhibits are all free to enjoy at Seafest 2015.

#### TRIABUNNA

**Triabunna Marina**

Sat 28 March, 9am-sunset

#### TICKETS

Free event

#### ADDITIONAL INFORMATION

See El Son Entero perform at 5pm!  
For more details about El Son Entero, see pages 22 & 23  
Visit [www.seafest.org.au](http://www.seafest.org.au) for more information about Seafest

#### EVENT PARTNERS



## MOONAH TASTE OF THE WORLD FESTIVAL



Image by Craig Opie

Moonah Taste of the World Festival is a vibrant, annual celebration of the multicultural suburb of Moonah in southern Tasmania; an immersive and authentic celebration of diverse world cultures through food, performance and cultural display in the relaxed Benjafield Park venue.

Moonah Taste of the World Festival celebrates the City of Glenorchy's growing reputation as an arts and cultural hub and has become, in a few short years, Tasmania's largest dedicated multicultural event, echoing the success of major celebrations of cultural diversity in urban centres around the world.



See El Son Entero perform at 1pm



See *The Body as a Riddle* perform at 12pm

#### MOONAH

**Benjafield Park**

Sun 29 March, 11am-4pm

#### TICKETS

Free event

#### ADDITIONAL INFORMATION

See El Son Entero perform at 1pm!  
For more details about El Son Entero, see pages 22 & 23  
See *The Body as a Riddle* from 12pm!  
For more details see page 20  
Visit [www.moonah taste of the world.com.au](http://www.moonah taste of the world.com.au) for more information about Moonah Taste of the World Festival

#### PRESENTED BY

Glenorchy City Council

# EL SON ENTERO

One of Cuba's finest traditional bands is touring Australia for the first time with its celebrated and passionate music. The exceptional musicians of El Son Entero are renowned within Cuba for their tightly woven rhythms.

Son is to Cuba what *Tango* is to Argentina; it is the very soul of Cuban music. You will be powerless to resist the lure of the dance floor once El Son Entero set the evening alight with their seductive syncopated beats and sultry melodies.

Led by the galloping 6-stringed tres, full afro-cuban percussion, rudely blistering trumpet and tight vocal harmonies, El Son Entero more than live up to their translated name *The Full Sound*.



## CUBA



## BURNIE

Burnie Arts & Function Centre  
– Town Hall

Tue 24 March, 8pm



## TRIABUNNA

Seafest

Sat 28 March, 5pm



## MOONAH

Moonah Taste of the World Festival

Sun 29 March, 1pm



## DURATION

Burnie 2 hours (inc interval)

Moonah & Triabunna 1 hour

## TICKETS



### Burnie

Full \$47

Concession \$37

Cabaret-style seating in tables of 8 surround the dance floor at Burnie Town Hall. Bring a friend or bring a group but whatever you do, don't forget to bring your dancing shoes!

### Triabunna & Moonah

See page 21 for more information about Seafest and Moonah Taste of the World Festival

## PRESENTED BY

Ten Days in association with the Castlemaine State Festival and the Fremantle Street Arts Festival

## SUPPORTED BY



**AND ANOTHER THING...**  
SCHOOLS: SEE PAGE 51 FOR DETAILS



Image supplied by EGREM, Cuba

# PASAJE

## El Son Entero

*Pasaje* takes you on a musical adventure into the scintillating energy and pulsating rhythms of Cuba's musical styles Salsa, Son, Bolero, Cha Cha, Chanqui and Trova; from their origins in Spanish colonialism and African slavery to their current global popularity.

*Pasaje* captures a moment of living musical history, as quintessential Cuban band, El Son Entero, share their country's fascinating cultural story. Complementing their passionate performance is rare archival footage from famed EGREM Recording Studio, depicted in a captivating and stunning montage.

This is a journey into Cuban cultural history that has rarely been shared, offering audiences a unique insight into a complex, multi-layered and beautiful culture.

### CUBA



### DEVONPORT

**Devonport Entertainment  
& Convention Centre**  
Wed 25 March, 7.30pm



### LAUNCESTON

**Princess Theatre**  
Thu 26 March, 8pm



### HOBART

**Wrest Point Show Room**  
Fri 27 March, 7.30pm



### DURATION

1 hour 10 minutes (no interval)

### TICKETS

Full	\$47
Concession	\$37



### PATRON ADVICE

Narrated in Spanish and English

### PRESENTED BY

Ten Days in association with the  
Castlemaine State Festival and the  
Fremantle Street Arts Festival

### SUPPORTED BY



# TAN DUN'S WOLF TOTEM

Tasmanian Symphony Orchestra

Composer of the music score to *Crouching Tiger, Hidden Dragon*, Tan Dun is an extraordinary talent who is equally at home writing for the cinema, concert hall or opera house. The world's great orchestras have been lining up to perform his music, including the Berlin Philharmonic, London Symphony, and New York Philharmonic.

The Tasmanian Symphony Orchestra is part of a syndicate of international orchestras which has commissioned Tan Dun's *Wolf Totem: Concerto for Double Bass*, a work which the Chinese-born composer has described as "an elegy of the prairie and blue skies".

Noted for his dazzling use of instrumental colours, Tan Dun is one of the world's finest orchestrators. Igor Stravinsky likewise knew how to conjure up extraordinary sounds from the orchestra, particularly in the radiantly beautiful suite from *The Firebird*, and Tōru Takemitsu married Western sounds and Eastern influences with remarkable skill.

Do you hear the call of the wild?...

TAN DUN *Wolf Totem: Concerto for Double Bass\**

STRAVINSKY  
*The Firebird – Suite* (1919)

STRAVINSKY  
*Song of the Nightingale*

TAKEMITSU *Tree Line*

*Johannes Fritzsch* conductor  
*Stuart Thomson* double bass

*I write about the  
sky, the earth,  
tears, the heart...*

Tan Dun on *Wolf Totem*:  
Concerto for Double Bass

## HOBART

**Federation Concert Hall**  
Sat 21 March, 7.30pm



## DURATION

2 hours (inc interval)

## TICKETS

Reserve	Full	Concession
Gold	\$89	\$83
Silver	\$75	\$65
Bronze	\$65	\$50

Hot Seat \$29

*Early Bird discount is not available  
on Hot Seat tickets*

## ADDITIONAL INFORMATION

\*World première season  
Co-commissioned by the  
Tasmanian Symphony Orchestra,  
Royal Concertgebouw Orchestra,  
Royal Liverpool Philharmonic,  
St Louis Symphony Orchestra and  
Taiwan Philharmonic Orchestra

## PRESENTED BY

Ten Days and Tasmanian Symphony  
Orchestra

## SUPPORTED BY



## CHINA AND TASMANIA



# A TASTE OF ITALY

Tasmanian Symphony Orchestra



Vivaldi, Corelli, Geminiani... For centuries, Italy was the powerhouse of the musical world. It attracted composers from all over and the 'Italian style' went global (or, as we might say today, it went viral).

In this concert Richard Gill, conductor and educator extraordinaire, takes you on a tour of Italian music of the Baroque, with Lloyd Hudson appearing as soloist in two sparkling concertos by Vivaldi.

But not just Italy, you'll get to hear Grieg's *Holberg Suite* and Warlock's *Capriol Suite*, two classic works for string orchestra.

**Richard Gill** conductor  
**Lloyd Hudson** flute & piccolo

VIVALDI Flute Concerto  
in G RV438

VIVALDI Piccolo Concerto  
in C RV443

CORELLI Concerto Grosso  
Op 6 No 8, *Christmas Concerto*

GEMINIANI Concerto Grosso  
in E minor

GRIEG *Holberg Suite*

WARLOCK *Capriol Suite*

## LATROBE

**Latrobe Memorial Hall**  
Fri 13 March, 7.30pm



## STANLEY

**Stanley Town Hall**  
Sat 14 March, 7.30pm



## BURNIE

**Burnie Arts & Function Centre – Town Hall**  
Sun 15 March, 2.30pm



## TICKETS

### Burnie (reserved seating)

Full \$55  
Concession \$42  
Student \$18

Tickets for children must be purchased through the TSO Box Office

### Stanley and Latrobe (unreserved seating)

Full \$29  
Concession \$24  
Student \$19

Tickets for children must be purchased through the TSO Box Office

## DURATION

2 hours (inc interval)

Tickets for *A Taste of Italy* and *Essentially Elgar*  
on sale from 15 December 2014

## ADDITIONAL INFORMATION

These events are excluded from the early bird discount

## PRESENTED BY

Tasmanian Symphony Orchestra

# ESSENTIALLY ELGAR

Tasmanian Symphony Orchestra

In the spirit of Mostly Mozart, *Essentially Elgar* focuses primarily on a single composer: Edward Elgar, the most loved and most 'English' of English composers. Elgar's justly famous Cello Concerto, written in the aftermath of World War I, is by turns poignant and passionate. A tour de force for the soloist, it has long been a favourite with listeners. Elgar had earlier made his name with the equally famous *Enigma Variations*, loving portraits in sound of the composer's nearest and dearest.

The *Elegy for Strings* "In Memoriam Rupert Brooke" by Frederick Septimus Kelly offers a portrait of a different kind. Musician, sportsman and soldier, Sydney-born Kelly composed the *Elegy for Strings* while stationed at Gallipoli in 1915. Andrew Schultz's *August Offensive*, which forms part of the 10-movement *Gallipoli Symphony*, presents another snapshot of Australia's 'Baptism of Fire'.

**Garry Walker** conductor  
**Nicolas Altstaedt** cello

ELGAR Cello Concerto

ELGAR *Enigma Variations*

KELLY *Elegy for Strings*

"In Memoriam Rupert Brooke"

SCHULTZ *August Offensive*



## HOBART

**Federation Concert Hall**  
Fri 27 March, 7.30pm



## DURATION

2 hours (inc interval)

## TICKETS

From \$29 to \$104

Ticket prices for this performance are subject to change without notice due to dynamic adjustment. For a full listing of all conditions and terms relating to the purchase of tickets to TSO events, please visit [www.tso.com.au](http://www.tso.com.au)

## TASMANIA





Image by Lisa Garland

# ACOUSTIC LIFE OF SHEDS

Big hART Inc.

The nature of rural life has seen dramatic change with small farms under pressure from shifting markets and expanding agribusiness. People relocate, knowledge is dispersed, customs change, and ritual is lost, yet sheds remain; an integral piece of the rural landscape. Farms are dotted with handmade buildings – some tin, some slab built in timber.

Big hART, Australia's leading arts and social change company, brings together farming families

and composers, musicians, sound designers and visual artists to explore the stories of these resilient spaces and respond to their shifting existence.

Take a journey through Tasmania's North West Coast and experience the world première of works from award-winning composers presented in the locations that inspired them, celebrating the endurance of these working buildings and the landscapes to which they belong.

Embark on a 5-shed touring experience over 32kms starting in Wynyard at 10am or 11.30am;

OR

Pick and choose your own experience by arriving at your chosen shed/s for any of the allotted performance times.

Created by Scott Rankin

## TASMANIA



Sat 21 – Sun 22 March &  
Sat 28 – Sun 29 March

## WYNYARD

### Bruce's Shed – East Wynyard

Your 5-shed touring experience starts here  
Collaborators: Damian Barbeler,  
Nicole Forsyth, Ben Carey, John Taylor  
Live performance, acoustic and visual  
installations

Performances 10am & 11.30am,  
open 9.45am to 2pm

## TABLE CAPE

### The Shearing Shed – Tulip Farm

Composer: Lucky Oceans  
Live performance with slide guitar,  
pedal steel and percussion  
Performances 11am & 12.30pm

### Jack's Shed - Table Cape

Composers: Madeleine Flynn  
and Tim Humphrey

Live performance, acoustic  
and visual installations  
Performances 12noon & 1.30pm,  
open 11.45am until 3pm

## BOAT HARBOUR

### Jane's Shed – Boat Harbour

Composer: Nick Haywood  
Live guided improvisation with bass,  
saxophone, guitar, drums and painter  
Performances 1.00pm & 2.30pm

## MILABENA

### Black Ridge Farm – Milabena

Collaborators: Genevieve Lacey,  
Marshall McGuire, Phil Slater, Jim Atkins  
Acoustic installations and a live  
performance for recorder, harp,  
trumpet and sound design  
Performances 2.15pm & 3.45pm

## TICKETS

Free event. Registration essential at  
[www.acousticlifeofsheds.bighart.org](http://www.acousticlifeofsheds.bighart.org)

## PATRON ADVICE

To receive information about locations,  
route and other special events, register  
at [www.acousticlifeofsheds.bighart.org](http://www.acousticlifeofsheds.bighart.org)

This event is held at various venues  
around the North West Coast and  
requires own transportation  
arrangements to participate

## PRESENTED BY

Big hART Inc. in association with  
Ten Days

Supported by Australia Council for  
the Arts, Arts Tasmania, Foundation  
for Rural & Regional Renewal



# CALLS ACROSS THE ISLAND

Linsey Pollak

Take a journey into the natural wonderland of Tasmania and listen to the voices of some of the most imperilled creatures on our planet sing out across time.

*Calls Across the Island* is a series of free outdoor concerts taking place at twilight at eight iconic Tasmanian sites. The audience is immersed in the beauty of sunset, accompanied by Linsey Pollak's live music.

Pollak is an instrument maker and composer who challenges traditional ideas of music. He is a master of live looping, playing and recording in real time during his performance. Multiple layers of music, made from the sounds of various endangered or extinct species, create a delicate and emotive musical performance. The sounds cry out from the past and ask the audience to reflect on their own place in Tasmania's future.

*Composed by Linsey Pollak*



## SHEFFIELD

**Eagles Nest Retreat**

Thu 19 March, 7pm

## STANLEY

**The Barracks**

Fri 20 March, 7pm

## CRADLE MOUNTAIN NATIONAL PARK

**Dove Lake Boatshed**

Sat 21 March, 7pm

## TULLAH

**Tullah Lakeside Lodge**

Sun 22 March, 7pm

## STRAHAN

**Henty Dunes**

Mon 23 March, 7pm

## LAKE ST CLAIR NATIONAL PARK

**Jetty**

Tue 24 March, 7pm

## LAKE PEDDER

**Teds Beach Campground**

Thu 26 March, 7pm

## SALTWATER RIVER

**Coal Mines Historic Site**

Sun 29 March, 7pm

## DURATION

45 minutes

## TICKETS

Free event

Audience capacity for this event is limited so registration is essential at [tendays.org.au](http://tendays.org.au) or call 03 6210 5721

## PATRON ADVICE

Detailed maps and further information on performance sites can be found at [tendays.org.au](http://tendays.org.au)

Please bring your own chair, cushion or picnic blanket and warm clothing.

In the event of inclement weather, check the website for relocation or cancellation of a performance. Allow yourself plenty of time to reach the site, look for the Ten Days signage for parking areas and please bear in mind some sites require a 5-10 minute walk from your car.

## SUPPORTED BY

Regional Touring Partner



Venue support provided by Tasmania Parks and Wildlife Service





# DIRTSOING

Featuring text by Alexis Wright

Black Arm Band

Music of the Australian Indigenous experience

*...potent and all  
consuming...this  
is music to send  
shudders down  
your spine and  
bring tears to  
your eyes.*

Liza Power - The Age

An unforgettable performance to move the heart and lift the spirit, *dirtsong* is inspired by the words of Miles Franklin Award winner Alexis Wright.

A powerful musical journey through Australia's cultural heartland, *dirtsong* is set against a backdrop of stunning moving imagery and text, featuring unforgettable songs performed in 11 different Aboriginal languages from some of the most extraordinary performers in the land.

Showcasing and celebrating the very best of Australian Aboriginal music, experience and identity, Black Arm Band is a collective of renowned Indigenous singers, musicians, performers and actors.

Black Arm Band astounded Tasmania with its sold-out performances of *Hidden Republic* at Ten Days 2011. Now, this powerhouse company of Indigenous music and theatre return with *dirtsong*.

*Original Text* – Alexis Wright

*Conception and Direction* – Steven Richardson

## LAUNCESTON

Albert Hall

Fri 27 March, 7.30pm



## HOBART

Federation Concert Hall

Sat 28 March, 7.30pm



## DURATION

1 hour 20 minutes (no interval)

## TICKETS

### Launceston

Premium	\$79
B Reserve	\$59
B Reserve	
Concession	\$49

### Hobart

Premium	\$79
A Reserve	\$69
B Reserve	\$59
B Reserve	
Concession	\$49

## PRESENTED BY

Black Arm Band



## AUSTRALIA



Black Arm Band is assisted by the Australian Government through the Australia Council for the Arts, its arts funding and advisory body



Black Arm Band is supported by the Victorian Government through Arts Victoria

## PATRON ADVICE

Aboriginal and Torres Strait Islander people are warned that audio and visual material included in this concert has been gathered from a range of sources and may contain voices of Indigenous people who have passed away and images of places that may cause sorrow

Black Arm Band CDs and merchandise available for sale from the venue foyers



Image by Toby Frost

# TYO FIVE-O CELEBRATION CONCERT

Tasmanian Youth Orchestra

The Tasmanian Youth Orchestra turns 50 with a series of sensational concerts for the whole family. Performances in Burnie and Launceston will showcase TYO in a selection of percussive and pulsating pieces by some of Australia's brightest new stars.

Special Guest and TYO Alumni, Tasmanian Symphony Orchestra timpanist, Matthew Goddard makes a dazzling contribution to the carnival, in Brazilian prince of percussion Ney Rosauero's *Concerto for Timpani and Orchestra*.

Conjuring images of animals, from mice to blue whales, TYO takes us from circus to sea in a program that culminates with Peggy Glanville-Hicks' masterpiece *Sinfonia da Pacifica*.

The TYO's 50th birthday celebration will have everyone dancing in their seats.

**GRENFELL** *Roar!*  
**ROSAURO** *Concerto for Timpani and Orchestra*  
**ABBOTT** *Fast Ride In A Suave Machine*  
 (play on *Three Blind Mice*)  
**CHARLTON** *Blue Whale Dreaming*  
**GLANVILLE-HICKS** *Sinfonia da Pacifica*

**Greg Stephens** conductor  
**Matthew Goddard** timpani

## TASMANIA



### BURNIE

**Burnie Arts & Function Centre**  
 – Town Hall

Sat 28 March, 7pm

### LAUNCESTON

**Princess Theatre**  
 Sun 29 March, 4pm

### DURATION

1 hour 10 minutes (inc interval)

### TICKETS

Full	\$20
Concession	\$15
Family of 4	\$45

### PRESENTED BY

Tasmanian Youth Orchestra  
 in association with Ten Days



**AND ANOTHER THING...**

MEET & GREET. SEE PAGE 52 FOR DETAILS

# 52ND SPIRIT OF INDIA

JOHN UNICOMB  
MEMORIAL CONCERT

Nataraj Cultural Centre

SPIRIT of INDIA is a rich celebration of Indian culture and classical music. In a wondrous display of the great Hindustani musical traditions, Meeta Pandit and her ensemble will perform ragas that will transport the audience to India's musical heartland.

Hindustani virtuoso Meeta Pandit has emerged as a shining star in the world of Indian classical music and hails from a dynasty of acclaimed musicians. Her astounding voice, with a range of more than three octaves, coupled with her exceptional musicality, has won her critical acclaim and a devoted audience of music lovers. Her rendering of traditional and rarely performed Tappa is a highlight of SPIRIT of INDIA.

*SPIRIT of INDIA  
program...allows  
wonderful opportunities  
to see and hear artists  
who are the equals  
of the very best in  
the world.*

Sydney Morning Herald



Image supplied by Nataraj Cultural Centre

HOBART

Theatre Royal

Tue 17 March, 7.30pm



TICKETS

Stalls and Dress Circle

Premium/	
A Reserve	\$75
B Reserve	\$60
C Reserve	\$50
B Reserve	
Concession	\$55

DURATION

1 hour 30 minutes (no interval)

PRESENTED BY

Nataraj Cultural Centre

INDIA AND  
AUSTRALIA



## TASMANIAN GUITAR TRIO – TOUCHDOWN IN KETTERING

The Tasmanian Guitar Trio, the flagship ensemble of the Tasmanian Guitar Studio, is characterised by a sense of spontaneity and a bold exploration across musical boundaries.

Performing on classical and flamenco guitars, the trio is directed by ARIA Award Winner Gareth Koch, a graduate of the Sydney Conservatorium of Music, the Royal Madrid Conservatorium, and the prestigious Academy of Music in Vienna. The versatile talents of Darcy O'Malley, an accomplished classical trumpeter and blues guitarist, and Oliver Marshall, an electric guitarist and bassist within the contemporary music genre, complete the trio.



Performing an eclectic repertoire of works that spans from J.S. Bach to James Reyne, the Tasmanian Guitar Trio will enthral and delight you.

KETTERING

Kettering Community Hall

Sun 22 March, 3pm



DURATION

1 hour 15 minutes (no interval)

TICKETS

Adult	\$20
Concession	\$15

PRESENTED BY

Kettering Concerts

ADDITIONAL  
INFORMATION

For more details  
about musicians  
and program visit  
[www.crag-tas.net](http://www.crag-tas.net)

TASMANIA



**AND ANOTHER THING...**  
MEET & GREET. SEE PAGE 52 FOR DETAILS

# The Spiegel tent

## RETURNS!



The legendary travelling salon that seduced Hobart in 2014 with its luxe velvet and mirror interior is back to delight audiences of all ages with a dazzling array of circus, cabaret, comedy, music and family entertainment from international, national and Tasmanian stars.

A favourite of festivals and fairgrounds worldwide, the uniquely intimate Spiegel tent setting envelops the audience in old world charm. Take your ringside seat or snuggle into a deluxe booth to experience the hand-curated program of world-class performances for a theatre experience like no other.

The Spiegel tent is situated within the elegant surrounds of *The Outdoor Lounge*. Once again entry is free to this al fresco food and beverage quarter on Hobart's sparkling waterfront, where everyone is welcome to enjoy themselves late into the evening.

**Full Spiegel tent program on sale 10am  
Thursday 11 December [tendays.org.au](http://tendays.org.au).**

Presented in association with  
Strut & Fret Production House

**PRINCESS  
WHARF 1  
FORECOURT  
5-29 MARCH**

Image by Alastair Bett

## Free opening extravaganza!

### THURSDAY 5 MARCH 5PM



# BEYOND

Circa



Spiegeltent

Internationally acclaimed and award-winning ensemble Circa invite you to step *Beyond...* into a sublimely surreal, unexpectedly moving world of rabbit heads, Rubik's Cubes and blindfolds. Strangely beautiful and curiously tender, this is a mysterious place where dynamic comedy meets irreverent vaudeville with a score of show tunes, electronica and rock ballads.

These stunningly uncanny world-class performers create a rich circus cabaret experience for all ages.

Don't miss this Spiegeltent headline show from the company that thrilled audiences around Tasmania in 2013 with *21 Circus Acts in 20 Minutes*.

Created by Yaron Lifschitz with the Circa Ensemble

*Ridiculously charming  
and outrageously skilled.*

The Guardian

## HOBART

### Spiegeltent

Fri 6 March, 7.45pm  
Sat 7 March, 5pm & 7.45pm  
Sun 8 March, 5pm & 7.45pm  
Mon 9 March, 5pm  
Wed 11 March, 7.45pm  
Thu 12 March, 7.45pm  
Fri 13 March, 7.45pm  
Sat 14 March, 5pm & 7.45pm  
Sun 15 March, 1pm



## DURATION

1 hour 10 minutes (no interval)

## TICKETS

Ringside	\$58
Full	\$48
Concession	\$43
Family of 4	\$150

**Tickets for this event  
on sale 10am Thursday  
11 December 2014**

## PRESENTED BY

Ten Days in association with Strut & Fret Production House  
Circa acknowledges the assistance of the Australian Government through the Australia Council, its arts funding and advisory body, and the Queensland Government through Arts Queensland



Australia  
Council  
for the Arts



Image by  
Dylan Evans



**AND ANOTHER THING...**  
WORKSHOP. SEE PAGE 51 FOR DETAILS



# LA SOIRÉE

Spiegeltent

*Good nights  
out don't get  
much better  
than La Soirée!*

The Daily Telegraph, UK

*La Soirée* is back! And it's more deliciously decadent and daring than ever.

The award-winning, five-star theatrical phenomenon that has won devotees around the world with its line-up of jaw-dropping, sexy and inexplicable acts returns to the Hobart Spiegeltent to amuse and amaze you. With a cocktail of astonishing acrobats, mind-bending feats and thrilling chanteuses, spiced with a pinch of the exotic and well-seasoned with humour, *La Soirée* is a beguiling concoction that has left audiences spellbound, titillated and astounded.

Made up of the world's greatest exponents of cabaret, new burlesque, circus sideshow and contemporary vaudeville, *La Soirée* creates a parallel universe of pure entertainment where raw, undeniable skill meets unstoppable laughter and high energy. It was the hottest ticket in Hobart for 2014, so don't miss your chance to experience this unforgettably naughty and hilarious evening of high glamour and low inhibition entertainment.

## HOBART

### Spiegeltent

Wed 18 March, 8.30pm  
Thu 19 March, 8.30pm  
Fri 20 March, 7.30pm & 10pm  
Sat 21 March, 5pm & 7.30pm  
Sun 22 March, 5pm & 7.30pm  
Tue 24 March, 8.30pm  
Wed 25 March, 8.30pm  
Thu 26 March, 8.30pm  
Fri 27 March, 7.30pm & 10pm  
Sat 28 March, 5pm & 7.30pm  
Sun 29 March, 5pm



## DURATION

1 hour 50 minutes (no interval)

## PATRON ADVICE

Contains nudity, adult themes and coarse language  
Recommended for 15+

## TICKETS

Ringside \$75  
Full \$65  
Concession \$55

**Tickets for this event on sale 10am  
Thursday 11 December 2014**

## PRESENTED BY

Ten Days in association with Strut & Fret Production House

Image by Viktor Wallstrom

# Spiegel Sideshows

We're taking Spiegel shows on the road! Hosted by some of our superb venue partners in the north and north west, this select program will include an assortment of dazzling and daring experiences to revel in.

Featuring renowned musicians, seductive cabaret, acclaimed comedians and family friendly fun, *Spiegel Sideshows* have an array of events to please or tease! Full event details and tickets will be available online at [tendays.org.au](http://tendays.org.au) from 13 November.

## BEYOND CIRCA

Strangely beautiful and curiously surreal, *Beyond* is a dazzling circus spectacular that will delight and enchant.

*'You cannot fail to be amazed... A masterpiece'*  
– Berliner Morgenpost

### BURNIE

Arts Theatre, Burnie Arts  
& Function Centre  
Tue 17 March, 7pm  
Wed 18 March, 7pm



### TICKETS

Full	\$48
Concession	\$43
Family of 4	\$150

### DURATION

1 hour 10 minutes (no interval)

### SUPPORTED BY

Circa acknowledges the assistance of the Australian Government through the Australia Council, its arts funding and advisory body, and the Queensland Government through Arts Queensland



Spiegel Sideshow

AT THE BAFC

Image by Andy Phillipson

# INHERITANCE

## JAMES MORRISON

Jazz legend James Morrison, along with his sons William and Harry, and acclaimed vocalist Hetty Kate and master drummer/percussionist David Jones, bring together their extraordinary talents to create a superb evening of music and joie de vivre.

DEVONPORT  Multi-Tix  
Devonport  
Entertainment  
& Convention Centre  
Fri 20 March, 8pm

TICKETS  
Full \$55  
Concession \$45

DURATION  
2 hours (inc interval)

*Ray Brown calls him 'The Genius'  
but Wynton Marsalis said it best:  
'Man, James Morrison can play!'*

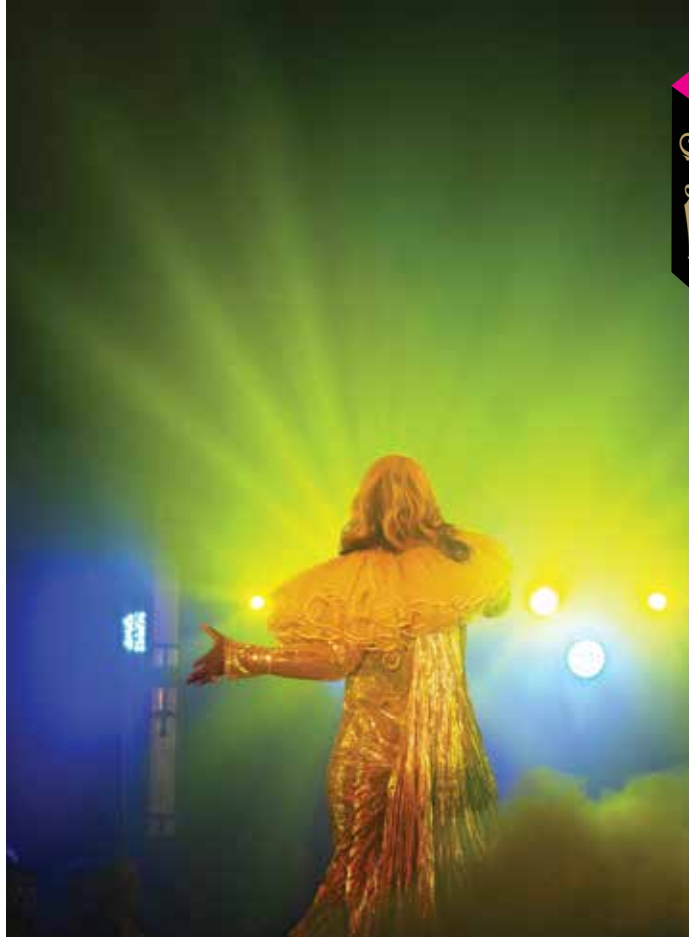


Image by Sarah Stewart

# SPIEGEL UP CLOSE

Step inside the Festival Club at the Earl for your chance to see some of the finest shows from the Spiegeltent up close and intimate. Featuring a smorgasbord of acts presented over three days including Claire Dawson, Colin Lane, Le Gateau Chocolat, Maria Lurighi, Matt Bowden, Peter Tanfield, Tom Flanagan and Yana Alana. See [tendays.org.au](http://tendays.org.au) for full details.

LAUNCESTON  
Earl Arts Centre  
Fri 20 March – Sun 22 March

TICKETS  
From \$20  
For more information on tickets please  
visit [tendays.org.au](http://tendays.org.au)

# Festival Club at the Earl

EARL ARTS CENTRE, LAUNCESTON

The Earl will be unrecognisable, revamped and reborn as the Festival Club at the Earl – the perfect place to rendezvous with friends before a show or to come together and reflect after one. This is where performers and punters will gather to relax and revel in the festival atmosphere.

The foyer of the Earl Arts Centre will be re-imagined by Launceston Artist Sue Henderson, transforming the space with her immersive piece *Plato's Cave at the Earl* (see page 50).

Your gracious Club hosts, Friends of Theatre North and Red Brick Road Ciderhouse, will serve up the best in Tasmanian ciders and wines from 5pm till late, and Theatre North will bring you a glittering program of stand up comedy and poetry readings.



# Theatre North Fringe at the Earl

EARL ARTS CENTRE, LAUNCESTON

In an exciting first, Theatre North presents a weekend Fringe program to coincide with the Tasmanian International Arts Festival.

## Transgender Seeking

Friday 27 March, 8pm

Sunny Drake is an Australian artist currently practising in Canada. After sold out shows in Europe, the US and Canada, he is back in Australia in 2015 to present *Transgender Seeking*, the hilarious and tender multimedia confessions of a queer romance-aholic.

*Beautiful, articulate, well considered and very sophisticated...It's light hearted, fresh and wank free... Sunny Drake is a progressive queer visionary.*

– Samesame.com



**AND ANOTHER THING...**  
WORKSHOP. SEE PAGE 53 FOR DETAILS

## Mudlark ONE DAY Project

Sunday 29 March, 7.30pm

Mudlark Theatre presents another adrenaline-fuelled challenge where playwrights, directors, actors, producers and technicians feverishly write, rehearse, produce and perform a series of one-act plays. From kick-off on Saturday, followed by 24 vigorous, brain-bending hours, Mudlark Theatre's *ONE DAY* teams take to the stage Sunday night to present the première performance (lines down) of each one-act play.



LAUNCESTON  
Earl Arts Centre

## TICKETS

Transgender Seeking  
Adult \$30  
Concession \$24

Mudlark ONE DAY Project  
Adult \$24  
Concession \$20

This event is excluded from the early bird discount

## ADDITIONAL INFORMATION

Visit [www.theatrenorth.com.au](http://www.theatrenorth.com.au) for more details

## PRESENTED BY

Theatre North



THEATRE ROYAL, HOBART

New and emerging Tasmanian talent, unleashed on the world.

The Theatre Royal, Tasmania Performs and Ten Days come together to support a daring program of independent Tasmanian theatre at the Theatre Royal Backspace. Each night you'll discover something different, something exciting, something a bit rough around the edges and something you've never seen before.

This is theatre that's raw, edgy, and as new as it gets. Get it while it's fresh, see it when it starts, and be there at the beginning!

## HOBART

### Theatre Royal Backspace

Thu 26 March, 6pm

Fri 27 March, 6pm

Sat 28 March, 6pm

## DURATION

Approximately 1 hour (no interval)

## TICKETS

### General admission

Adult \$20  
Child/  
Concession \$12

This event is excluded from the early bird discount

## ADDITIONAL INFORMATION

Visit [www.theatreroyal.com.au](http://www.theatreroyal.com.au) for more information

## PRESENTED BY

Theatre Royal in association with Tasmania Performs and Ten Days



Image by Mike Bowers

# REORDER

Bronte Booth, David Hamilton, Ed King, Jacob Leary, Serena Rosevear & Isis St Pierre and Tricky Walsh

Change can be challenging. It requires us to shift expectations and find new solutions. Change can also bring renewal, the prospect of encountering exciting and unimagined opportunities. Spring Bay Mill has begun the process of converting the old woodchip mill site at Triabunna into a centre of environmental and cultural exchange, set within a botanical garden.

Using the mill's large-scale industrial environment as its canvas, *Reorder* takes advantage of this unique moment to examine the transition from one form of enterprise to another. Six site-specific installations have been created in response to particular locations at the Spring Bay Mill site, utilising found materials and the power of this complex landscape.

Bronte Booth recovers discarded wood, David Hamilton reassembles the remnant chip pile, Ed King forges redundant rusted machine parts, Jacob Leary redefines systems and processes, Serena Rosevear and Isis St Pierre reconfigure documents and their human traces, and Tricky Walsh reconstitutes stuff into imaginary machines.

Curators: Anna Cerneaz and Jane Deeth

## TRIABUNNA

**Spring Bay Mill**

Sat 21 – Sun 29 March, daily 10am-6pm

## PATRON ADVICE

This event is partially outdoors.

Please wear flat heeled shoes and dress for inclement weather

## COMMISSIONED BY

Artists commissioned by Spring Bay Mill in collaboration with Ten Days



## SUPPORTED BY

Regional Touring Partner



## AND ANOTHER THING...

WORKSHOP & ARTISTS' TALKS  
SEE PAGES 51 & 52 FOR DETAIL



Detail from *Habits and Habitat*. Image courtesy of the artists

## HABITS AND HABITAT

The Ronalds

This installation investigates our awareness of rural habitats on the verge of change, and perhaps even extinction. Almost all Australians live in urban settings, yet the bush has always held an iconic status as part of the Australian identity. The contents of the home are the guide to the human experience lived within its rooms – the marks on the kitchen wall measuring the height of growing children, photographs on the mantelpiece, the contents of cupboards – provide details for a sense of history.

Patrick and Shannon Ronald's forensic photographic recreation of a life-size diorama of a farmhouse provides a voyeuristic look into another person's habitat. The effect renders visible the dust settling on the furniture, the patterns in the bedspread, the texture of the papers on the shelves, the views into other rooms, and the contrast of the sun-drenched landscape beyond the windows.

Curator: Bec Dean

### LAUNCESTON

Queen Victoria Museum, Inveresk  
Fri 20 March – Sun 26 April  
Daily 10am-4pm (except Good Friday)

### PRESENTED BY

Ten Days and Queen Victoria Museum and Art Gallery

### SUPPORTED BY

Regional Touring Partner



Patrick Hall, *Not Dark Yet* (detail) Collection: Museum of Old and New Art

## THINGS I ONCE KNEW: THE ART OF PATRICK HALL

*Things I once knew* is a survey exhibition of the work of Tasmanian artist and furniture maker Patrick Hall, representing the development of his artistic practice from the mid-1980s to the present.

Hall is best known for his elaborate, intricately crafted cabinets that use images, sculptural elements, models, found objects and text as vehicles for complex and layered narratives. Hall's work has been built around humble objects and the histories, memories and stories they generate or evoke.

The exhibition includes 30 cabinets and wall pieces, characterised by a high level of craftsmanship and the skilful manipulation and combination of both materials and associations. The sequence of works is structured loosely around the thematic, stylistic and narrative threads in Hall's work, such as the use of redundant technologies, biographical elements, or more existential concerns about time, memory and randomness.

Curator: Peter Hughes

### HOBART

Tasmanian Museum and Art Gallery  
Fri 20 March – Sun 30 August  
Tue to Sun, 10am-4pm

### FLOOR TALK

Sat 21 March, 11am

### PRESENTED BY

Tasmanian Museum and Art Gallery



**AND ANOTHER THING...**  
ARTISTS' TALKS. SEE PAGE 52 FOR DETAILS

# OUTSIDE THOUGHTS

Emily Floyd, Mitch Cairns, Darren Sylvester and Danie Mellor



Emily Floyd, *The Outsider*, 2005, wood, varnish, lacquer and acrylic paint.  
Image courtesy of the artist and Anna Schwartz Gallery

*Outside Thoughts* examines critical and geographical perspectives in relation to Australian identity. The connection between aerial viewpoints and the national psyche – a feature of the history of Australian landscape painting – is used as a starting point for the exhibition. Responding to this idea in a broad sense, curator Wes Hill has invited some of Australia's most innovative contemporary artists to adopt imagined 'outside' perspectives in their work, linking geographical representation with evocations of Australia's cultural, historical and political character.

Curator: Wes Hill

## HOBART

### Contemporary Art Tasmania

Thu 19 March – Sun 29 March,  
daily 12pm-5pm

Wed 1 April – Sun 19 April,  
Wed to Sun 12pm-5pm

## FLOOR TALK

Exhibition discussion with curator  
Wes Hill

Wed 18 March, 5pm

## PRESENTED BY

Contemporary Art Tasmania

# COLONIAL AFTERLIVES

*Colonial Afterlives* brings contemporary responses to the complex legacies of British occupation from sixteen outstanding artists living in Australia, New Zealand, Jamaica, Barbados, Canada and Britain, including Tasmanian artists Julie Gough, James Newitt, Yvonne Rees-Pagh, Geoff Parr and Michael Schlitz. The exhibition incorporates diverse views that range from melancholic eulogies to passionate and, at times, scathing commentaries on the complex legacies of British occupation. While the artists are all finely attuned to the histories and politics of their own region, the exhibition reveals profound and sometimes surprising connections. Ultimately, it raises larger questions around the nature of post-colonial identity in an increasingly globalised world.

Curator: Dr Sarah Thomas

## HOBART

### Salamanca Arts Centre – Long Gallery

Thu 19 March – Mon 27 April  
Daily 10am-5pm

## PRESENTED BY

Salamanca Arts Centre

## SUPPORTED BY

Arts Tasmania, Australia Council  
for the Arts, City of Hobart and  
Contemporary Art Tasmania

## FLOOR TALK

Sat 21 March, 12.30pm



Christian Thompson, *Trinity III*, from the POLARI series 2014, C-type print.  
Image courtesy of the artist and Gallery Gabrielle Pizzi, Melbourne



Image by Raymond Arnold

## LANDSCAPE IS A CONVERSATION

Richard Kenton Webb

Drawing on inspiration from a range of diverse influences such as art history, anthropology, philosophy, psychoanalysis and theology, Richard Kenton Webb explores the subjects of colour, creativity and the imagination. His paintings, drawings and prints are founded in the romantic and metaphysical traditions of the great English landscape paintings of his countrymen. This sensibility finds its Tasmanian inflection through his encounter with the power and strangeness of the island's west during his residency at Landscape Art Research Queenstown (LARQ) in 2014.

To satisfy his fascination with colour, Webb often makes his paints from scratch. In the remote west he met Rory Wray McCann, a retired metallurgist, who revealed the secret to extracting and refining pigment from western Tasmanian sulphides. The resulting rich palette of subtle, earthy and vibrant yellows was used to manifest the works in this exhibition.

Curator: Raymond Arnold

### QUEENSTOWN

#### LARQ

Sat 21 – Sun 29 March,  
Daily 2pm–6pm

### PRESENTED BY

LARQ in association with Ten Days

### SUPPORTED BY

Arts Tasmania and Tasmanian  
Regional Arts



**AND ANOTHER THING...**  
ARTISTS' TALKS. SEE PAGE 52 FOR DETAILS



back country, 2014, plant dyes on silk. Image courtesy of the artist

## BACK COUNTRY

India Flint

India Flint's practice melds the visual and written poetics of place and memory. She is renowned for her commitment to ecologically sustainable contact print processes that honour Australian indigenous plants. She is also a gatherer of found objects – stone, windfall biological material, minerals, and bones, as well as the discarded artefacts and hard detritus of human inhabitation. Walking drawing, assemblage, mending, stitch and text provide a means of mapping country, recoding and recording her responses to landscape.

*back country* is an evolving body of work that grew and expanded over eighteen months travelling the red heart of the big island north of Tasmania.

### ROSNY

#### The Barn at Rosny Farm

Fri 13 March – Thu 19 March &  
Mon 30 March – Sun 12 April,  
Wed to Sun 11am–5pm

Fri 20 March – Sun 29 March,  
Daily 11am–5pm

### PRESENTED BY

Clarence City Council



David Keeling, *Endless Summer*, 2010, oil on linen. Image by Jack Bett

## INSIDE OUT

David Keeling

This major survey exhibition highlights the career of well-known Australian artist David Keeling and focuses on the preoccupation with landscape across three decades – from early metaphysical landscapes of the mind that explore the nature/culture dichotomy; to the politics of the contemporary landscape and its connection to history; to more recent works that deal with particular locations and the exploration of interior/exterior spaces.

This exhibition also celebrates the 125th anniversary of the University of Tasmania. Keeling studied at the Tasmanian School of Art (now Tasmanian College of the Arts) in the 1970s.

Curator: Dr Malcom Bywaters

### LAUNCESTON

Academy Gallery

Sat 21 Feb – Sat 18 Apr  
Mon to Fri 9am–5pm and Sat 1pm–4pm



**AND ANOTHER THING...**  
ARTISTS' TALKS. SEE PAGE 52 FOR DETAILS

### FLOOR TALK

David Keeling  
Thu 26 March, 12.30pm

### PRESENTED BY

University of Tasmania



Star Theatre, Stewart Street Devonport, 1937.  
The Robinson Family Photographic Business. Scanned from glass plate negative, R1437

## REVIEWING

Lisa Garland, Troy Ruffels, Ilona Schneider,  
Brian Sollars, Bert Robinson and  
Albert Robinson (dec)

Different times and cultural settings, combined with changing technologies, have influenced the way artists select, conceptualise and create their photographic work. *ReViewing* examines the sphere of photography from analogue to digital, documentation, social history and fine art.

The impetus for the exhibition is the Robinson Collection of Devonport. The Collection of over 40,000 negatives made by Bert Robinson and his son Albert between 1927 and the mid 1970s, features studio portraits, images of the city, rural life and special events on the North West Coast of Tasmania.

Four contemporary photo-media artists, Lisa Garland, Troy Ruffels, Ilona Schneider and Brian Sollars, have been invited to create images by referencing the photographic archives of the Collection and the versatility and ascendancy of the photographic medium through early and contemporary photographic interpretations.

Curators: Dr Ellie Ray & Dunja Rmandic

### DEVONPORT

Devonport Regional Gallery

Fri 13 March – Sun 10 May  
Mon to Fri 10am–5pm, Sat 12pm–5pm,  
Sun 1pm–5pm

### PRESENTED BY

Devonport Regional Gallery  
and Devonport City Council

### SUPPORTED BY

Arts Tasmania

### FLOOR TALK

Lisa Garland, Troy Ruffels,  
Ilona Schneider & Brian Sollars  
Fri 13 March, 12pm



Owen Leong, *Budi* (from the birthmark series), 2010, pigment print on archival cotton paper. Image courtesy of the artist and Diane Tanzer Gallery + Projects, Melbourne

## MADE IN CHINA, AUSTRALIA

Tony Ayres, Chen Ping, Shuxia Chen, Clara Chow, Lindy Lee, Kevin Leong, Owen Leong, Liu Xiao Xian, Jane Quon, Pamela Mei-Leng See, Aaron Seeto, Jason Wing, William Yang, John Young, Zhou Xiaoping, Tianli Zu

The migration and settlement of any large racial group in a new host country is complex. The complexity of the Chinese diaspora in Australia can be seen in the distinctive and diverse Chinese Australians living here. These categories are often reduced in the popular imagination to a single Asian stereotype. *Made in China, Australia* portrays how the different and individual processes of acculturation have impacted in diverse ways on the work of Chinese Australian artists.

The exhibition, curated by Greg Kwok Keung Leong, questions how the work of Chinese Australian artists is affected by the particular Chinese Australian heritage and experiences they have had. Some of the artists in the exhibition were born in Australia, others travelled to Australia in the past and some are recent arrivals which creates subtle differences that arise in the artists' work due to their particular relationship with the two cultures.

*Made in China, Australia* investigates contemporary art practices across a range of mediums and disciplines, genders and generations.

Curator: Greg Kwok Keung Leong

### LAUNCESTON

Queen Victoria Art Gallery, Royal Park  
Feb 14 – April 18  
Daily 10am-4pm except Good Friday

### FLOOR TALK

Owen Leong, artist Sat 15 February, 11am  
Greg Kwok Keung Leong, curator  
Sun 22 March, 2pm

### PRESENTED BY

Queen Victoria Museum and Art Gallery

### SUPPORTED BY

Arts Tasmania, Burnie Regional Art Gallery, City of Hobart, Contemporary Art Tasmania, Contemporary Touring Initiative, Gordon Darling Foundation, Salamanca Arts Centre, National Touring Support Network and Visual Arts and Craft Strategy Tasmania



Julie Rrap, *Escape Artist: Castaway 2*, 2009, digital print on archival rag paper. Image courtesy of the artist and Roslyn Oxley9 Gallery, Sydney

## MAD WOMEN IN THE ATTIC? A FEMINIST REVISIONING OF THE ARCHIVE

To coincide with the 40th anniversary of International Women's Year and the 125th anniversary of the University of Tasmania, the Plimsoll Gallery's exhibition, *Mad women in the attic?* will reprise the significant contributions by great female artists and writers to the Tasmanian College of the Arts public program over three decades.

A rich set of themes emerges from these women's art: domestic relations, sexual politics, activism, queer and racial politics, empowerment, the gaze, portraiture, self-portraiture and performance – the body as site of identity, vulnerability, power, intimacy, transgression, subversion, abjection, violation and masquerade. The curators, Mary Scott and Maria Kunda, have invited a selection of Tasmanian and international artists and writers to reflect upon and amplify this storehouse of female expression to revise and re-envision these themes.

Curators: Mary Scott and Maria Kunda

### HOBART

#### Plimsoll Gallery

Friday 13 March – Sunday 17 May  
Gallery open Wed to Mon 12noon-5pm  
Closed Tuesdays and public holidays.

### PRESENTED BY

The Plimsoll Gallery,  
Tasmanian College of the Arts  
(University of Tasmania)

### SUPPORTED BY

University of Tasmania

### FLOOR TALK

Guest presentation by Visiting Artists:  
Fri 13 March, 12.30pm-1.30pm  
Dechaineux Lecture, Tasmanian College of the Arts, Hunter Street



Jamin, *Self Mediating Other*, 2013, synthetic spray paint on front and back of acrylic.  
Image courtesy of the artist

## STAND BACK

Tim Burns, Fred Fisher, Patrick Grieve, Paul Gundry, Jamin, Donna Lougher, Anne Mestitz, Janine Morris, Anne Morrison, Michael Muruste, Ellie Ray, Paul Snell and Lucia Usmiani

*Stand Back* refers to the ability to gain a different understanding when we change our perspective. *Stand Back* prioritises the child's perspective. In art making, different techniques, patterns and optical illusions can change an image depending on whether we look at it closely or at a distance.

Thirteen contemporary artists explore these possibilities using a wide range of materials, creating works that play with the visual and physical 'presence' of perception. The unifying principle of the works on show is their strength and richness. This exhibition, curated by Josie Hurst, introduces children to an engagement with art and art making through exposure to rich and diverse visual experiences. Adults will also connect strongly with the powerful presence of these artworks from some of Tasmania's finest contemporary artists.

Curator: Josie Hurst

### MOONAH

Moonah Arts Centre  
Fri 6 March – Wed 1 April

### FLOOR TALK

Sat March 21, 2pm with Curator Josie Hurst and a selection of the artists

### PRESENTED BY

Moonah Arts Centre

### SUPPORTED BY

Tasmanian Regional Arts  
and Glenorchy City Council

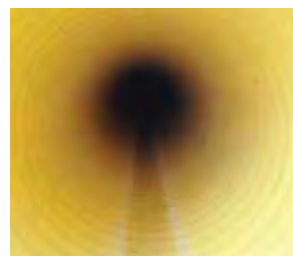
## SUPERSLOW

Lucy Bleach

Lucy Bleach's *superslow* examines time and material in relation to geology, harmonic tremor and lag through a series of sculptural, filmic and sound-based works. It invites us to look slowly and to sustain our engagement with the works.

*superslow* draws on Bleach's practice of sculptural responses to geological processes that frame concepts of volatility, impact and resonance. By slowing down the experience of these forces, the artworks present opportunities for intimate encounter and understanding. A series of process-based sculptures materially alter during the course of the exhibition, presenting a body of work in slow flux.

Curator: Sean Kelly



Lucy Bleach, *superslow*, 2014, digital print. Image courtesy of the artist

### HOBART

Kelly's Garden, Salamanca Arts Centre  
Tue 10 March – Mon 20 April  
Weekdays 10am-5pm, Sat 21, Sun 22,  
Sat 28 and Sun 29 March 10am-3pm

### FLOOR TALK

Sat 28 March, 2pm

### PRESENTED BY

Salamanca Arts Centre

### SUPPORTED BY

Arts Tasmania, City of Hobart,  
Aspect Design and the Tasmanian College  
of the Arts (University of Tasmania)



**AND ANOTHER THING...**  
ARTISTS' TALKS. SEE PAGE 52 FOR DETAILS

## PAJ HOOB (FLOWER ROOM) #2

Vanghoua Anthony Vue

Thousands of Hmong people fled Laos after the Second Indochina War in the 1950s, undertaking a drastic and traumatic migration to many countries, including Australia. Today the Hmong people form a global diaspora connected through familial linkages, global transportation, and new technologies. This enables the Hmong people to rediscover and reimagine who they were in the past, whilst redefining who they are capable of becoming in the present and the future.

This installation draws inspiration from Hmong textile traditions, bringing its designs, patterns, colours and processes into a contemporary expression



Paj Hoob (detail), 2014.  
Image by Morgan Barnsley

that speaks of culture's continuity through its resilience and adaptation to place.

The work has been created by the artist Vanghoua Anthony Vue, in collaboration with young people from Tasmania's Hmong community.

### HOBART

Gallery Ten  
Mon 16 – Sun 29 March  
Weekdays 10am-5pm, Sat 10am-1pm



Winner 2013 Burnie Print Prize: Susanna Castleden, *Building The World in the Correct Position and the Correct Shape*, 2012, hand-coloured screen print. Image courtesy of the artist

## BURNIE PRINT PRIZE 2015

The Burnie Print Prize is a major national art award that presents high quality contemporary printmaking from artists living and working throughout the country. The prize acknowledges the historic role paper has played in the Burnie community, and contributes to the gallery's substantial and significant permanent collection of works on paper.

Now in its fifth instalment, the prize attracts entries from Australia's finest contemporary printmakers. The 2015 selection made by distinguished judges, Jason Smith, Curatorial Manager at the Queensland Art Gallery/Gallery of Modern Art, and significant Tasmanian printmakers, previous prize winner Helen Wright and Raymond Arnold, will continue to build the collection and the national reputation of the Burnie Regional Art Gallery.

### BURNIE

**Burnie Regional Art Gallery**  
Sat 14 March – Sun 10 May  
Mon to Fri 10am-4.30pm  
Sat, Sun & Public Holidays  
1.30pm-4.30pm

### FLOOR TALK

Jason Smith, Burnie Print Prize  
2015 Judge  
Sat 14 March, 2pm

### PRESENTED BY

Burnie Regional Art Gallery

### SUPPORTED BY

Burnie City Council, Arts Tasmania  
and Friends of BRAG

## DRAWING: ATMOSPHERES OF A SALIENT LANDSCAPE

David Edgar

*Atmospheres of a Salient Landscape* transforms the humble and timeless medium of charcoal drawing into an immersive experience.

David Edgar's exploration describes an intimate relationship with the landscape of North West Tasmania. He strips back the recognition of specific locations to reveal aesthetically charged manifestations of silence and noise; darkness and light; expansion and contraction.

David Edgar's exhibition will be displayed across two exhibition spaces; The Atrium Gallery will feature smaller works from the series and the Makers' Space will present David's large-scale pieces against the epic architecture of Burnie's Makers' Workshop.

Curator: Joanna Gair



David Edgar, *Outside (detail)*, 2014, charcoal on paper. Image courtesy of the artist

### BURNIE

Sat 14 March – Tue 14 April, 2014  
**Makers' Space** Daily 9am-5pm  
**The Atrium Gallery** Mon to Fri 9am-5pm

### PRESENTED BY

The University of Tasmania (Cradle Coast)



**AND ANOTHER THING...**  
ARTISTS' TALKS. SEE PAGE 52 FOR DETAILS

## CONNECTED

Cath Robinson, Emma Bugg,  
Raef Sawford, 3D Tasmania

If the desire for connection is considered a basic human need that satisfies our sense of belonging, how then does the ubiquity of digital technology change our interactions? *Connected* explores the interconnections between creativity and technology. The artists investigated the use of various digital tools and processes to expand their arts practices during a 12-month residency at 146 ArtSpace in 2014. This exhibition is a demonstration of their findings.



Raef Sawford, *All is Not Lost*, 2014  
Image courtesy of the artist

### HOBART

**146 ArtSpace**  
Thu 12 March – Fri 10 April  
Mon to Fri 9am-5pm  
Closed public holidays

### PRESENTED & SUPPORTED BY

Arts Tasmania



Indeco, Rocket Mill, 2014. Image by Peter Whyte

## INDECO IN THE MAKING TWO DECADES OF DESIGN

Patrick & Mieke Senior-Loncin

Indeco, a contraction of INnovative DEsign Company, was established in 1992 in the idyllic surrounds of Swan Point on the West Tamar. Created by Patrick and Mieke Senior-Loncin, it has become a name synonymous with merging a minimalist design aesthetic with exceptional craftsmanship. Indeco strives for a simple elegance to its unique and innovative homeware designs, preferring timbers, such as Huon pine, with subtle colours and grain patterns that allow the overall design to shine through unhindered by unnecessary ornamentation or detail.

The exhibition showcases the development of one of Australia's leading product design companies, from humble beginnings to maker of acclaimed collectable homewares, through the display of over fifty products and prototypes spanning 23 years.

Curator: Rye Dunsmuir & Lisa Ancher

### LAUNCESTON

Design Tasmania

Sat 14 March – Sun 24 May  
Mon to Fri 9.30am–5.30pm  
Sat and Sun 10am–4pm

### FLOOR TALK

Fri 13 March, 5–6pm

Patrick & Mieke Senior-Loncin

PRESENTED BY

Design Tasmania

## THINK BIG – LIVE LIGHT FURNITURE SOLUTIONS FOR THE FUTURE

The *Think Big – Live Light* project, developed by Design Tasmania, is one of a series of projects that bring together designers and manufacturers to research solutions for the development of innovative products that address the way we live. Loz Abberton, Simon Ancher, Luke & Anita Dineen, Jye Edwards, Geoff Marshall, Tanya Maxwell, Matthew Prince and Scott van Tuil will showcase prototypes that address the need for smaller and smarter furniture solutions for smaller dwellings. The exhibition will take place in temporary displays that reflect on the changing nature of the way we work and live.

This display will be held in a secret location in Hobart, to be revealed the day before opening.



Image by Chris Crerar

To find out where you can *Think Big, Live Light* just head to [tendays.org.au](http://tendays.org.au) in March when we will announce all the details.

Curators: Rye Dunsmuir & Lisa Ancher

### SECRET LOCATION

Secret location revealed in March!  
Check [tendays.org.au](http://tendays.org.au) in March for details

### PRESENTED BY

Design Tasmania

### SUPPORTED BY

Enterprise Connect

## UNDERCURRENTS

*Undercurrents* draws on strong European connections, particularly with the Dutch and French, and the shore where all kinds of sea wrack are to be found – skeletons of sea sponges, fragments of figureheads, driftwood, animal bones, rope, fishing nets, bottles, metal objects and other debris.

This collaborative project between Barbie Kjar, Jennifer Marshall and Milan Milojevic, whose medium is primarily printmaking and work on paper, responds to the sea around Tasmania and the island's rich maritime history. The work specifically references the rich array of artefacts held in the Maritime Museum's collection.

Curator: Rona Hollingsworth



Images courtesy of the artists

### HOBART

Maritime Museum of Tasmania

Fri March 20 – Sat June 20, daily 9am–5pm

### FLOOR TALK

Sun 22 March, 2pm

PRESENTED BY

Maritime Museum of Tasmania



Sue Henderson, *Installation (detail)*, 2014, ink on paper

## PLATO'S CAVE AT THE EARL

Sue Henderson

*Plato's Cave* transforms the Earl Arts Centre foyer into an immersive environment where visitors can eat, drink and question the nature of perception and reality. Sue Henderson's work creates illusory 3D surfaces that reference geological structures, rock surfaces and perceptual experiences in natural environments. The installation suggests imaginative possibilities, and the effect of education, or the lack of it, on our nature.

*Plato's Cave* is part of an ongoing international series of site-specific large-scale installations in which Henderson explores how paintings might operate in relation to architecture and places. Each site has unique physical qualities and uses which contribute to the development, meanings and readings of the work.

Curator: Greg Leong

### LAUNCESTON

**Festival Club at the Earl**  
Fri 20 March – Sun 29 March  
Mon to Fri 10am–4pm  
Sat & Sun 10am–1pm

### FLOOR TALK

Sun 29 March, 11am

### PRESENTED BY

Theatre North

### SUPPORTED BY

University of Tasmania

## MEMENTO MORI: ART, MEDICINE AND THE BODY

Lauren Black

Artists and scientists have a long shared fascination with studying, recording and understanding the human body and engaging with human anatomy, medicine and pathology. Artist Lauren Black combines historical and rare medical equipment, implements and specimens from the R.A. Rodda Museum of Pathology and the Crowther Collection, with evidence from a recent residency in Panang, Malaysia, an island steeped in the traditions of Chinese medicine and home to the oldest Chinese medical hall of South East Asia, revealing the unique union that is possible between Western and Eastern systems.



Lauren Black, *The Speech of Angels (detail)*



*Dissecting and post mortem set*  
Image by Peter Mathews

### PRESENTED BY

Allport Library and Museum of Fine Arts  
and R.A Rodda Museum of Pathology,  
University of Tasmania

### SUPPORTED BY

Tasmanian Archive and Heritage Office  
and Hotel Penaga

### HOBART

Allport Library and Museum  
of Fine Arts

Fri 13 March – Sat 30 May  
Mon to Fri 9.30am–5pm, Sat 9.30am–2pm

### FLOOR TALK

Dr Sorrel Standish-White and Lauren Black  
Thu 26 March, 11am



**AND ANOTHER THING...**  
ARTISTS' TALKS. SEE PAGE 53 FOR DETAILS

## RELEASE DATE: HISTORY, MEMORY, LONGFORD

Longford, Tasmania becomes a point of departure for mapping our colonial and post-colonial connections. It will be transformed with video installations projected onto streets, shop facades and parklands that question the memories, histories and contemporary experiences of the community. The site-specific works, developed through collaborations between The Longford Group and Longford residents, will challenge the anecdotes of ancestry and reveal the secrets of the region's histories.



The Longford Group, *Process Exhibition*  
at Articulate, Sydney 2014

The Longford Group consists of Nicholas Tsoutas, curator, Brianna Munting, associate curator, artists Elizabeth Day, Julie Gough, Noeleen Lucas, and writer Anna Gibbs.

### LONGFORD

Fri 20 – Mon 23 March, dusk–10pm

# AND ANOTHER THING

## TALKS, WORKSHOPS, MASTER CLASSES AND EVERYTHING ELSE!

Festivals aren't just about sitting in darkened theatres, absorbing the action taking place on stage. Festivals are a gathering of the tribes, where artists and audiences from around the globe come together to share their creative experiences and expertise. Festivals offer a unique opportunity for local arts practitioners and audiences to meet with touring artists to exchange ideas, mentor one another and build lasting relationships.

Through *And Another Thing... Ten Days* will facilitate an array of talks, workshops, master classes, mentoring and happenings that will extend the events and benefits of the Tasmanian International Arts Festival for all participants and create a lasting legacy for the 2015 festival.

For the full range of free and ticketed events please visit [tendays.org.au](http://tendays.org.au).

To pique your interest, here are some of events you can take part in:

### Talking TIAF

The Tasmanian International Arts Festival, Artists' Talks

**When:** Mon 23 – Fri 27 March, 12.30-1.30pm

**Where:** Spiegeltent, Hobart

**Price:** Free

Join us for a series of free lunchtime panel talks where our visiting artists sit alongside their Tasmanian counterparts and delve into each other's creative processes, influences, ideas and talking points. Each of the five days will feature a different arts practice from composers to writers, choreographers, visual artists and directors. These artists create their work from unique perspectives; composers who don't work with orchestras, writers who are constructing story in new ways, directors who create performances that are outside of 'ordinary' theatres. Look forward to conversations that will range far and wide. For further details on the themes and panellists, see [tendays.org.au](http://tendays.org.au).

### Aakash Odedra Masterclass

*Rising*, pg. 16-17, Masterclass

**When:** Wed 25 March, 4-6pm

**Where:** Ogilvie Studio, Hobart

**Price:** Free

Award-winning contemporary British dancer Aakash Odedra has developed a choreographic language which reflects his knowledge and experience of the Indian classical dance forms Kathak and Bharat Natyam. This choreographic masterclass for experienced dance practitioners will introduce participants to his unique movement vocabulary, with repertoire material and advanced techniques such as the unique hand movements, virtuosic turns and precise footwork that are characteristic of Odedra's choreographic work.

Participation will be barefoot and for 16 years and over.

Registration is essential.

To attend this workshop, please email your name and contact details to [registrations@tendays.org.au](mailto:registrations@tendays.org.au) with 'Aakash Odedra Masterclass' in the subject line.

### Open Circa

*Beyond*, pg. 35, Workshop

**When:** Thu 12 March, 2pm-3.30pm

**Where:** Salamanca Place lawns, Hobart

**Price:** Free

The magnificent Circa is bringing a mixed bag of tricks and treats for all you budding circus stars out there. Everyone is welcome to join this energetic workshop and try their hand – and feet! – at a range of circus skills in the company of world-class performers. Registration is essential. To attend this workshop, please email your name, age, any circus experience and contact details to [registrations@tendays.org.au](mailto:registrations@tendays.org.au) with 'Open Circa' in the subject line.

### Art Made Easy

*Reorder*, pg. 41, Workshop

**When:** Sat 21 March, 1-2pm

**Where:** Spring Bay Mill, Triabunna

**Price:** Free

Contemporary art can be confusing and leaves many people thinking "I don't get it...". Often, when presented with contemporary art we are unsure how to react or what to say. In *Art Made Easy*, Dr Jane Deeth works with participants as they engage in unpacking some of the mysteries of contemporary art and apply an easy-to-use method for looking at unusual and intriguing artwork, including the work in *Reorder*.



### AND ANOTHER THING...

LOOK OUT FOR THIS ICON THROUGHOUT THE PROGRAM!

SUPPORTED BY

## ISLANDERS

### CUBAUS Workshop with El Son Entero

*El Son Entero*, pg. 22-23, Schools

**When:** Sat 28 March, 12:30pm-2:30pm

**Where:** Triabunna

**Price:** Free

Quintessential Cuban band, El Son Entero, will be running a workshop for school students where the band introduces a Cuban theme to a classic Australian song the students have chosen and learned. They will infuse the song with a Cuban rhythm and students (with the band) will then perform the piece as singers, percussionists and instrumentalists. Students who wish to learn some basic Cuban dance routines can also do so in the lead up to, and during, this workshop. For more information regarding venue and preparation, interested schools should contact Annette Parker at Triabunna District High School on 03 6257 3199.

**SPACE in a Suitcase**

The Tasmanian International Arts Festival, Program

**When:** Sat 7 March – Sun 29 March

**Where:** Various  
**Price:** Free

Local director and dance educator Kelly Drummond Cawthon leads this creative laboratory that will give participants the chance to slip behind the curtains into intimate confines with physical performers and theatre practitioners at the Tasmanian International Arts Festival. Interact directly with national and international artists, learning first-hand from the movers and shakers whose work is being presented at the Festival.

A performance laboratory dedicated to nurturing and sustaining performing artists, *SPACE in a Suitcase* is set to be a magnet for choreographers, performers, teachers, musicians, and scholars, drawn together to experiment, explore, collaborate, learn, and create in a highly creative and inspiring environment.

The Program will run from March 7-29, and include performances, workshops, forums, artist talks and site-specific improvisations. We will travel the studios, streets, galleries and theatres from Hobart, to Burnie, Launceston and the far corners of the state. Places are limited so enrol early! For further program information and enrolment please email [space@salarts.org.au](mailto:space@salarts.org.au) or phone 0467 661 170.

**Meet Live Live**

*Dementia 13*, pg. 4-5, Q&A

**When:** Post performance  
Sat 28 March, approx 9.30pm

**Where:** Wrest Point  
Entertainment Centre, Hobart

**Price:** Free

Stay in your seat at the end of the performance for a post-show Q & A session with Live Live Cinema when the cast and musicians of *Dementia 13* come back on stage.

**Tea in Kettering with the Tasmanian Guitar Trio**

*Tasmanian Guitar Trio*

*Touchdown in Kettering*, pg. 33,  
Meet & Greet

**When:** Post-performance  
Sun 22 March, approx 4.15pm

**Where:** Kettering

**Price:** Free

Join musicians Gareth Koch, Darcy O'Malley, and Oliver Marshall for a post-concert afternoon tea in the Kettering Community Hall.

**MADE on the road**

*Episodes*, pg. 18, Workshop

**When:** Fri 20 March – Wed 25 March, 12pm-1pm,

**Where:** St Mary's (20 March), Bridport (21 March), George Town (23 March), Ulverstone (24 March), Stanley (25 March)

**Price:** Free

MADE (Mature Artists Dance Experience) will lead friendly dance movement workshops for grandparents, parents and 'mature' children – it has been known to have three generations in the same class! Wear comfortable clothes and shoes, socks or bare feet. Join the MADEns in this fun hour of music and gentle movement and receive \$5 off the ticket price to MADE's performance of *EPISODES*. For more details or to register please email MADE at [dance@madecompany.com.au](mailto:dance@madecompany.com.au)

**I Think I Can for Schools**

*I Think I Can*, pg. 11, Schools

**When:** Fri 20 March,  
Mon 23 March and Fri 27 March,  
10am-1pm

**Where:** Hobart (Fri 20 March & Mon 23 March) & Burnie (Fri 27 March)

**Price:** Free

Select sessions can be arranged especially for school students' participation. School groups can book these sessions by calling Morgan on 03 6210 5700.

**Meet the Artist – Justus Neumann**

*Alzheimer Symphony*, pg. 10,  
Meet & Greet

**When:** Post performance,  
approximately 8.40pm

**Where:**

Bruny Island (Sat 21 March), Huonville (Sun 22 March), Kempton (Tue 24 March), Deloraine (Wed 25 March), Devonport (Thu 26 March) & Swansea (Sat 28 March)

**Price:** Free

Audience members are invited to stay behind after the performances of *Alzheimer Symphony* to meet this phenomenal artist, find out more about the making of the show and ask him about his life and work as a performer and theatre-maker.

**Discover Kathak with Aakash Odedra**

*Rising*, pg. 16-17, Workshop

**When:** Sun 22 March, 2pm-4pm

**Where:** Tasdance Studio,  
Launceston

**Price:** Free

Award-winning contemporary British dancer Aakash Odedra will share his knowledge and experience of the north Indian classical dance form Kathak. Rich in history, this centuries-old form comes from the word 'Katha', which means story, and is characterised by graceful hand movements, virtuosic turns and precise footwork. The workshop is open to anyone interested in discovering this beautiful dance form, introducing hand movement, gestures and footwork, and may include Kathak compositions which fit into specific rhythmic timecycles. Participation will be barefoot and for 12 years and over. Registration is essential. To attend this workshop, please email your name and contact details to [registrations@tendays.org.au](mailto:registrations@tendays.org.au) with 'Discover Kathak' in the subject line.

**Ask Stan's Cafe**

*The Cardinals*, pg. 12-13, Q&A

**When:** Post performance  
Fri 20 March and Thu 26 March  
approx 9pm

**Where:** St John's Cathedral,  
Launceston (20 March) &  
St David's Cathedral, Hobart  
(26 March)

**Price:** Free

Stay in your seat at the end of the performance for a post-show Q & A session, hosted by Tasmanian theatre artists, with Stan's Café Theatre Company when the cast of *The Cardinals* come back on stage.

**This is TYO**

*TYO FIVE-O*, pg. 32,  
Meet & Greet

**When:** Post performance  
Sat 28 March approx 8pm  
and Sun 29 March approx 5pm

**Where:** BAFC Town Hall, Burnie  
(Sat 28 March) and Princess  
Theatre, Launceston (Sun 29  
March)

**Price:** Free

Audience members are invited to join the TYO musicians for an informal chat after their performances. If you're an aspiring musician and you want to find out more about playing in a state youth orchestra, bring all your questions and they'll be happy to answer them!

**On Art & Thought:  
In conversation with  
Richard Kenton Webb**

*Landscape is a Conversation*,  
pg. 44, Artists' Talks

**When:** Tue 24 March,  
Wed 25 March & Fri 27 March,  
12.30pm-1.30pm

**Where:** Festival Club at the  
Earl, Launceston (24 March),  
Spiegelent, Hobart (25 March)  
& Makers Workshop, Burnie  
(27 March)

**Price:** Free

In Tasmania as the LARQ artist-in-residence for the festival, Richard Kenton Webb will be embarking on a series of conversations with Tasmanian artists considering the interlinking of art and thought. The series commences in Launceston with Serena Rosevear and David Keeling, moves on to a *Talking*

TIAF slot in the Spiegeltent with Patrick Hall, Tricky Walsh and Lucy Bleach and finishes up in Burnie with David Edgar, Ed King and Jacob Leary.

**Into the Body – A curious journey through the Pathology Museum with Dr Sorrel Standish-White**

*Memento Mori*, pg. 50, Artists' Talks

**When:** Sat 28 March, 11am

**Where:** Rodda Museum of Pathology, UTAS, Hobart

**Price:** Free

Curator at this fascinating museum, Dr Standish-White will explore the ideas and history behind this intriguing body of pathology specimens, historical objects and medical apparatus. Registration essential at [sorrel.standishwhite@utas.edu.au](mailto:sorrel.standishwhite@utas.edu.au)

**Autobiographical Performance & Writing**  
*Fringe at the Earl (Transgender Seeking)*, pg. 40, Workshop

**When:** 28 March, 2pm

**Where:** Festival Club at the Earl, Launceston

**Price:** A fee applies to this workshop. Please contact Theatre North for details.

Australian artist Sunny Drake, currently living in Canada, creates and tours multi-disciplinary work which seeks to transform our world through magical, quirky, humorous and connected stories and experiences. In this workshop he will share his particular approach to writing for performance.

**Our 'Hood, Our People**

*The Body as a Riddle*, pg. 20, Program

**When:** Tue 10 March – Sun 29 March

**Where:** Launceston

**Price:** Free

*Our 'Hood, Our People* is a three-week community arts and cultural development project created in partnership between the Northern Suburbs Community Centre (NSCC) and Tasdance. A series of creative movement and performing arts workshops, with an emphasis on process, will take place in two centres in the northern suburbs of Launceston. Led by Portuguese choreographic artist, Madalena Victorino (an internationally-

renowned community performance exponent), four Tasdance members along with Portuguese dancer Marta Silva will work with the diverse members of the NSCC community in the cultivation of new avenues for creative expression and cultural exchange. A sharing of the outcome will happen at the Rocherlea Community Centre. Please check [www.tasdance.com.au](http://www.tasdance.com.au) for more information.

## THE ULTIMATE WHISKY DAY OUT

### Tasmanian Whisky Tours

This is a celebration of whisky from both Tasmania and around the globe. Tasmania's whisky industry now receives international praise that ranks it among the finest in the world. Sullivans Cove whisky was voted World's Best Single Malt Whisky in March 2014 at the World Whisky Awards in London. We now invite you to join us as we visit Tasmania's southern distilleries, traverse some of the most beautiful landscape in the state, meet the distillers, taste their whisky and get up close and personal with the distillation process.

We'll be starting with a breakfast whisky at 9.30am at the home of Tasmanian whisky, the Lark Cellar Door. After a day's travelling (and sampling) we'll be back for a whisky dinner and tastings from around the world, specifically from the countries wherein the festival artists have travelled. We expect there will even be a number of them sitting at the tables among us.

So if you're serious about whisky, we welcome you to join us on The Ultimate Whisky Day Out! Curated specifically for the first Tasmanian International Arts Festival.

**Curator:** Brett Steel



Image by Andrew Wilson

#### HOBART

Tours start at Lark Distillery  
Cellar Door  
Thu 19 March

Ultimate Whisky Day Out  
+ Whisky dinner and all tastings  
Tour: 9am-5pm

Dinner: 7pm-10.30pm

Whisky dinner and tastings only  
Dinner: 7pm-10.30pm

#### TICKETS

Ultimate Whisky Day Out +  
Whisky dinner and all tastings  
Limited availability\* – 22 tickets only \$249pp

Whisky dinner and tastings only  
Limited availability – 100 tickets only \$89pp

This event is excluded from the early bird discount

\* Possible extension of sales into extra touring day on Friday March 20, 2015

#### PATRON ADVICE

This event is 18+. We encourage responsible drinking

#### ADDITIONAL INFORMATION

For more information go to [www.tasmanianwhisky.com.au](http://www.tasmanianwhisky.com.au)

#### PRESENTED BY

Tasmanian Whisky Tours

#### SUPPORTED BY

Tasmanian Whisky Appreciation Society

#### TASMANIA





# RACT ROAD TRIPPING

Get in the car and get on the road! Mix and match your Tasmanian International Arts Festival experience with performances and exhibitions across the state.

Start and end where you want. Take ten days, take a week, a long weekend or just make it an overnighter. Here are a few ideas, check out our website for other suggestions.

It's a great island: great scenery, great food, great performances and great visual arts. Take a road trip and see some more of it.

## BASE YOURSELF IN BURNIE:

### Thursday 19 March

Start off with a visit to the Burnie Makers' Workshop for David Elgar's exhibition *Drawing: Atmospheres of a Salient Landscape* pg. 48. After you've perused the gallery try your hand at paper making, Burnie's signature craft, with one of the specialist paper makers based in the Workshop then round your visit out with some cheese and whisky tasting.

### Friday 20 March

It's off to Devonport to see *ReViewing* pg. 45 at the Devonport Regional Gallery during the day, then head to the Spiegel Sideshow, *Inheritance* pg. 39 at the DECC in the evening. Stay the night in Devonport.

### Saturday 21 March

Travel from Devonport to Stanley for *Calls Across the Island* pg. 28-29 at The Barracks. Spend the night in Stanley and climb to the top of The Nut.

### Sunday 22 March

Drive to Wynyard for *Acoustic Life of Sheds* pg. 27. Stay the night in Wynyard.

### Monday 23 March

Back to Burnie to attend the *Burnie Print Prize* exhibition pg. 48. Base yourself in Burnie tonight and tomorrow.

### Tuesday 24 March

Dance to *El Son Entero* pg. 22 at the BAFC Town Hall.

### Wednesday 25 March

Hit the road to Devonport for *Pasaje* pg. 23 at the Town Hall Theatre & stay the night.

### Thursday 26 March

Return to Burnie for the powerful *Hamlet, de Los Andes* pg. 8-9 at the BAFC Theatre.

### Friday 27 March

Pack a picnic and road trip down to Queenstown for *Landscape is a Conversation* pg. 44 at LARQ and *Watermark* pg. 7 at the Paragon Theatre. Stay the night in Queenstown.

### Saturday 28 March

Drive back to Burnie for the Tasmanian Youth Orchestra's 50th birthday celebration *TYO Five-O* pg. 32 at the BAFC Town Hall.

### Sunday 29 March

Head to BAFC Back Gallery and select an alter ego for *I Think I Can* pg. 11.

## BASE YOURSELF IN LAUNCESTON:

### Thursday 19 March

It's an opening night extravaganza with *The Cardinals* pg. 12-13 at St John's Cathedral then kick on for celebrations at the *Festival Club at the Earl* pg. 40 and check out Sue Henderson's installation *Plato's Cave at the Earl* pg. 50.

### Friday 20 March

Today, visit Design Tasmania for the exhibition *Indeco in the Making - Two Decades of Design* pg. 49 and this evening see *Rising* pg. 16-17.

### Saturday 21 March

Stock up at the Harvest Launceston Farmers' Market whilst enjoying Tasdance's *The Body as a Riddle* pg. 20 then drive to Cradle Mountain for Linsey Pollak's *Calls Across the Island* pg. 28-29. Stay at Cradle Mountain.

### Sunday 22 March

Drive back to Launceston in time for the afternoon *Spiegel Up Close* pg. 39.

### Monday 23 March

Drive up the East Tamar, dropping in at various artisan food businesses, to George Town for MADE's *Episodes* pg. 18. Stay over in George Town.

### Tuesday 24 March

Explore Evandale and Longford as you make your way back to Launceston for Live Live Cinema's *Dementia 13* pg. 4-5 at the Princess Theatre. Stay in Launceston.

### Wednesday 25 March

Drive out to Deloraine to attend *Alzheimer Symphony* pg. 10 at the Little Theatre and then stay the night in Deloraine.

### Thursday 26 March

Return to Launceston for *Pasaje* pg. 23 at the Princess Theatre.

### Friday 27 March

Black Arm Band performs *dirtsong* pg. 30-31 at the Albert Hall.

### Saturday 28

Launceston's own Stompin present *6000 to 1* pg. 19 in the Sawtooth ARI.

### Sunday 29 March

Join the Tasmanian Youth Orchestra as it celebrates their 50th birthday with *TYO FIVE-O* pg. 32.

## BASE YOURSELF IN HOBART:

### Thursday 19 March

Kick off your festival with *La Soirée* pg. 36-37 in the Spiegelent.

### Friday 20 March

Head to Elizabeth Mall to *I Think I Can* pg. 11 then attend the opening night performance *Hamlet, de Los Andes* pg. 8-9 at the Theatre Royal.

### Saturday 21 March

Explore *superslow* pg. 47 exhibition in Kelly's Garden, then the TSO's *Tan Dun's Wolf Totem* pg. 24-25 at the Federation Concert Hall before joining the inner Hobart adventure of *Hidden Cities* pg. 6.

### Sunday 22 March

Drive down The Channel for the afternoon concert *Tasmanian Guitar Trio Touchdown in Kettering* pg. 33 and join the performers for afternoon tea afterwards. Then drive back through Cygnet towards Huonville for *Alzheimer Symphony* pg. 10 and stay the night in Huonville.

### Monday 23 March

Make your way back to Hobart and visit a selection of exhibitions from our Visual Arts program from pg. 41 then kick back in the evening at Spiegelent's *Outdoor Lounge* pg. 34.

### Tuesday 24 March

Sail away with the *Blue Angel* concert at the Astor Hotel, or book in for the night to take in the complete *Blue Angel Experience* pg. 14-15.

### Wednesday 25 March

Take your pew for *The Cardinals* pg. 12-13 at St David's Cathedral.

### Thursday 26 March

Make your way to Australia's most historic theatre to see *Rising* pg. 16-17 at the Theatre Royal.

### Friday 27 March

For a theatrical evening it's *RAWSpace* pg. 40 at the Theatre Royal Backspace then *Pasaje* pg. 23 at the Wrest Point Show Room.

### Saturday 28 March

Wind your way to Triabunna and explore the spectacular Spring Bay Mill site with the art installation *Reorder* pg. 41. Make your way back to Hobart and, if you pass the 'D-13 Test', you're brave enough to face *Dementia 13* pg. 4-5 at the Wrest Point Entertainment Centre.

### Sunday 29 March

Enjoy a leisurely drive down the Tasman Peninsula, visiting Eaglehawk Neck and the Port Arthur Historic Site, then at sunset see *Calls Across the Island* pg. 28-29 at the Coal Mines Historic Site, Saltwater River. Stay the night on the peninsula.

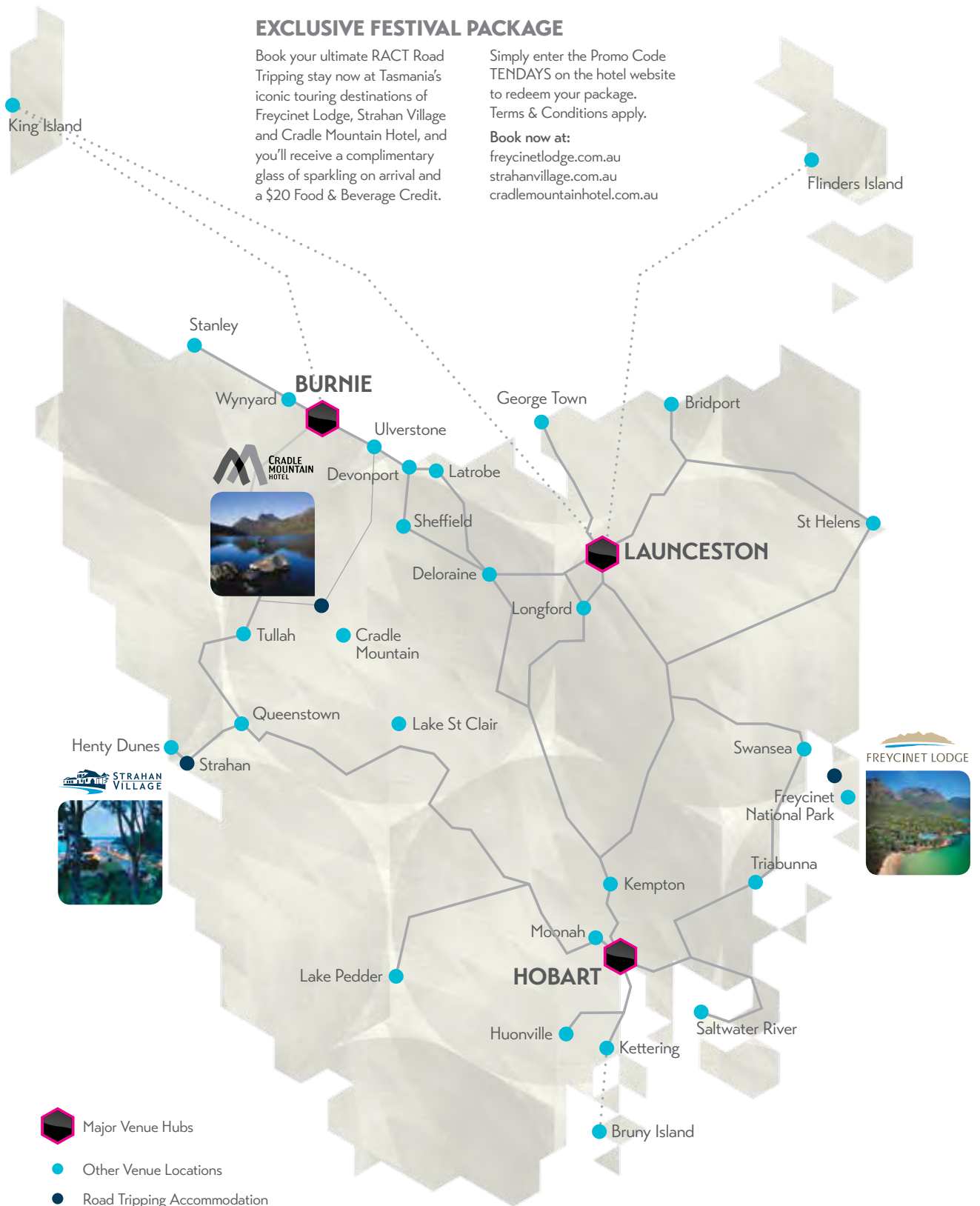
## EXCLUSIVE FESTIVAL PACKAGE

Book your ultimate RACT Road Tripping stay now at Tasmania's iconic touring destinations of Freycinet Lodge, Strahan Village and Cradle Mountain Hotel, and you'll receive a complimentary glass of sparkling on arrival and a \$20 Food & Beverage Credit.

Simply enter the Promo Code **TENDAYS** on the hotel website to redeem your package. Terms & Conditions apply.

### Book now at:

freycinetlodge.com.au  
strahanvillage.com.au  
cradlemountainhotel.com.au



# TICKETING AND ACCESSIBILITY

## TICKETS

Tickets for Ten Days' Tasmanian International Arts Festival and Spiegeltent 2015 powered by

**TICKETS** .COM

The quickest and easiest way to book your Tasmanian International Arts Festival and Spiegeltent tickets is online at **tendays.org.au**

Simply choose the event you'd like to attend, click the **BOOK NOW** button and complete the transaction via the secure payment screen. Online booking is time efficient, easy and secure.

Select your own seat from the Interactive Seat Map facility, which is available online when booking for reserved seating events.

Tickets will be posted to the address you provide at time of booking, held for collection, or in some cases you will be able to choose to print your tickets at home.

## BOOK YOUR TICKETS

You can book your Tasmanian International Arts Festival tickets (and Spiegeltent tickets from 10am Thursday 11 December) at one of seven outlets across the state. Please refer to the outlet for opening days and times over the Christmas and New Year period.

### TEN DAYS

(03) 6210 5777  
71 Murray Street, Hobart  
Mon to Fri 10am-5pm,  
Sat 10am-1pm  
[www.tendays.org.au](http://www.tendays.org.au)

### BURNIE ARTS & FUNCTION CENTRE

(03) 6430 5850  
77-79 Wilmot Street, Burnie  
Mon to Fri 9am-5pm  
[www.burniearts.net](http://www.burniearts.net)

### THEATRE NORTH AT THE PRINCESS

(03) 6323 3666  
57 Brisbane Street, Launceston  
Mon to Fri 9am-5pm, Sat 10am-1pm  
[www.theatrenorth.com.au](http://www.theatrenorth.com.au)

### THEATRE ROYAL

(03) 6233 2299  
29 Campbell Street, Hobart  
Mon to Fri 9am-5pm,  
weekends subject to events  
[www.theatreroyal.com.au](http://www.theatreroyal.com.au)

### CENTERTAINMENT

(03) 6234 5998  
53 Elizabeth Mall, Hobart  
Mon to Fri 9am-5.30pm,  
Sat 10am-2pm  
[www.centertainment.com.au](http://www.centertainment.com.au)

### DEVONPORT ENTERTAINMENT & CONVENTION CENTRE

(03) 6420 2900  
145 - 151 Rooke Street, Devonport  
Mon to Fri 9am-4.30pm  
[www.decc.net.au](http://www.decc.net.au)

### SPIEGELTENT

PW1 Forecourt, Hobart  
From 5 March to 29 March 2015  
Open 1 hour before first performance to late

Tickets to selected events **only** can be purchased at the following venues:

### WREST POINT ENTERTAINMENT CENTRE

Only selling for Hobart performances of *Dementia 13* and *El Son Entero* - Pasaje  
1300 795 257  
410 Sandy Bay Road, Hobart  
Wrest Point Guest Services  
Daily 8am - 10.30pm  
[tixtas.com.au](http://tixtas.com.au)

### TASMANIAN SYMPHONY ORCHESTRA

Only selling for *Tun Dun's Wolf Totem*, *Essentially Elgar* and *A Taste of Italy*  
(03) 6232 4450  
Federation Concert Hall  
1 Davey Street, Hobart  
Mon to Fri 9am- 5.30pm  
[www.tso.com.au](http://www.tso.com.au)

## COMPANION CARD

Ten Days is proud to continue to participate in the Companion Card scheme in 2015. If you hold a Companion Card, tickets must be purchased in person and the Companion Card sighted. The Companion Card entitles eligible people with lifelong disability who require attendant care, to a free ticket for their companion carer.

## CHILD TICKETS

Available to persons 12 years and under. Child tickets are only available for certain events.

For TSO event *A Taste of Italy*, child tickets can only be purchased through the TSO Box Office.

## CONCESSION TICKETS

Available to full time students and pensioners. Proof of eligibility is required when purchasing, collecting concession tickets or with *print@home* tickets on entry to the venue.

If no child price available for certain events, children 12 years and under will be eligible for the concession price.

## FAMILY TICKETS

Selected events have family tickets available for purchase. A Family ticket includes 4 people, at least 2 of whom must be children.

## DISCOUNTS

### Early Bird

Early Bird discount is only available on full-priced tickets to eligible\* Tasmanian International Arts Festival events and subject to availability. Offer starts at 10am November 13 2014 and ends 11.59pm December 24 2014. The number of Early Bird tickets available for each eligible event may vary and are strictly limited. Allocation may sell out before the offer expires. Discount does not apply to booking or postage fees, concession, child or Family tickets.

\* The following shows are excluded from the Early Bird offer:

- A Taste of Italy* - Latrobe Memorial Hall, Latrobe
- A Taste of Italy* - Stanley Town Hall, Stanley
- A Taste of Italy* - Burnie Town Hall, Burnie
- Essentially Elgar* - Federation Concert Hall, Hobart
- Blue Angel* - Astor Hotel, Hobart
- RAWspace* - Theatre Royal, Hobart
- Fringe at the Earl* - Earl Arts Centre, Launceston
- The Ultimate Whisky Day Out* - Hobart

Please note that Spiegeltent Hobart events *La Soirée* and *Beyond* go on sale 10am, Thursday 11 December 2014.

## Multi-Tix



## Multi-Tix

Multi-Tix discount is only available on a full-priced ticket to a minimum of 3 unique eligible^ Tasmanian International Arts Festival events purchased in a single transaction subject to availability. Multi-Tix offer starts at 12am December 25 2014 until a full-priced ticket to a minimum of 3 separate eligible events is no longer available to be purchased. Discount does not apply to booking or postage fees, concession, child and Family tickets.

^ Multi-Tix are available for the following events in the 2015 Tasmanian International Arts Festival program:

EVENT	HBA	LTN	BRN	DEV
<i>Hamlet de los Andes</i>	✓		✓	
<i>Rising</i>	✓	✓		
<i>Dementia 13</i>	✓	✓		
<i>El Son Entero</i>			✓	
<i>Pasaje</i>	✓	✓		✓
<i>Alzheimer Symphony</i>		REGIONAL		✓
<i>The Cardinals</i>	✓	✓		
<i>Beyond in Burnie</i>			✓	
<i>James Morrison - Inheritance</i>				✓

## ACCESSIBILITY

If a venue is identified as being accessible, it is possible for patrons with mobility difficulties or wheelchair users to attend the performance. However, this access may require assistance from Front of House staff and may constitute the need to use an alternate entrance to the venue or navigate small obstacles (such as a low step) or an uneven surface.

For further information on venue accessibility, please contact one of the Ten Days Ticket Outlets.

Please contact the relevant venue listed below to book tickets for wheelchair users:

Burnie Arts & Function Centre – (03) 6430 5850

Theatre North At The Princess – (03) 6323 3666

Theatre Royal – (03) 6233 2299

Devonport Entertainment & Conference Centre – (03) 6420 2900

Federation Concert Hall (Tasmanian Symphony Orchestra events only) – (03) 6232 4450

For all other bookings please contact the Ten Days Box Office – (03) 6210 5777

## FEES AND CHARGES

All prices listed in this brochure are inclusive of all booking fees. A booking fee of \$5 is included in each ticket, except for Family tickets for *Swamp Juice* and *TYO FIVE-O*, for which a fee of \$2.10 per ticket is included. For Spiegeltent event *Beyond* in Hobart and Burnie and other relevant Spiegeltent events with Family tickets available, a booking fee of \$5 per ticket is included. Booking fees are inclusive of any GST payable. Performance fees for Tasmanian International Arts Festival are GST exempt.

Ticket prices for Tasmanian Symphony Orchestra event *Essentially Elgar* are subject to dynamic adjustment and are subject to change without notice. Please refer to the TSO website for further information [tso.com.au](http://tso.com.au).

## REFUNDS/ EXCHANGES

Please check your booking carefully at the time of purchase. Ten Days has a no refund or exchange policy on completed bookings.

## PROGRAM DETAILS

The Tasmanian International Arts Festival program of events displayed here is correct at the time of printing. Unfortunately, sometimes programs are required to change and, rarely, events must be cancelled. In the unlikely event this occurs, every effort will be made to inform patrons but please check the website for the latest version of the program and to confirm events on the day of the performance you wish to attend.

## OUTDOOR PERFORMANCES

Any change of venue or cancellation of an outdoor performance due to changed weather conditions will be announced on the Ten Days website. Please visit [tendays.org.au](http://tendays.org.au) on the day of the performance to confirm details.

## PLEASE NOTE

In consideration of performers and other patrons, the use of mobile phones, paging devices, cameras or recording equipment is not permitted. Latecomers may only be admitted at the discretion of the management at a convenient break in the program.

Some performances will have lockouts. Please check start times carefully.

# VENUE INFORMATION

## HOBART

### 146 ArtSpace

146 Elizabeth Street

### Allport, LINC Tasmania

Ground Floor, 91 Murray Street

### Astor Hotel

157 Macquarie Street

### Contemporary Art Tasmania

27 Tasma Street

### Elizabeth Mall

Elizabeth Street

### Federation Concert Hall

1 Davey Street

### Frankie's Empire

### Coffee House

129 Elizabeth Street

### Gallery Ten

71 Murray Street

### Kelly's Gardens (SAC)

Off Kelly's Lane,

77 Salamanca Place

### Lark Distillery Cellar Door

14 Davey Street

### Maritime Museum

16 Argyle Street

### Plimsoll Gallery

Centre for the Arts,  
Hunter Street, Hobart

### Salamanca Arts Centre

77 Salamanca Place

### Spiegeltent

Princes Wharf 1,  
Forecourt, Castray Esplanade

### St David's Cathedral

23 Murray Street

### Theatre Royal

29 Campbell Street

### Tasmanian Museum

### & Art Gallery

Dunn Place

### Theatre Royal Backspace

29 Campbell Street  
(Entrance off Sackville Street)

### Wrest Point

### Entertainment Centre

410 Sandy Bay Road

### Wrest Point Show Room

410 Sandy Bay Road

## LAUNCESTON

### Academy Gallery

### Tasmanian College of the Arts

2 Invermay Road

### Albert Hall

45 Tamar Street

### Design Tasmania

Corner Brisbane & Tamar Streets

### Earl Arts Centre

10 Earl Street

### Harvest Launceston

### Community Farmers' Market

71 Cimitiere Street (car park)

### Princess Theatre

57 Brisbane Street

### Sawtooth ARI

2/160 Cimitiere Street

### St John's Anglican Church

157 St John Street

### Queen Victoria Museum,

### Inveresk

2 Invermay Road

### Queen Victoria Art Gallery,

### Royal Park

2 Wellington Street

## NORTH WEST

### DEVONPORT

### Devonport Entertainment and Convention Centre

145-151 Rooke Street

### Devonport Regional Gallery

45-47 Stewart Street

### LATROBE

### Latrobe Memorial Hall

Gilbert Street

### QUEENSTOWN

### LARQ (Landscape Art Research Queenstown)

8 Hunter Street

### Paragon Theatre

Lot 1, McNamara Street

### STANLEY

### Stanley Town Hall

10 Church Street

### ULVERSTONE

### Gnomon Pavilion

Off Crescent Street

## SOUTH

### HUONVILLE

### Huonville Town Hall

40 Main Road

### KEMPTON

### Kempton Memorial Hall

89 Main Street

### KETTERING

### Kettering Community Hall

2963 Channel Highway

### MOONAH

### Moonah Arts Centre

23-27 Albert Road

### Moonah Taste of the World Festival

Benjafield Park

### ROSNY

### The Barn

Rosny Farm, Rosny Hill Road

### SWANSEA

### Swansea Town Hall

Franklin Street

### TRIABUNNA

### Seafest

Triabunna Marina

### Spring Bay Mill

555 Freestone Point Road

## NORTH

### BRIDPORT

### Bridport Hall

Main Street

### DELORAINE

### Little Theatre

17 Barrack Street

### GEORGE TOWN

### George Town Memorial Hall

29-67 Macquarie Street

### ST HELENS

### Portland Memorial Hall

41 Cecilia Street

### LONGFORD

Wellington Street,

Entrance to the Village Green

## BURNIE

### Atrium Gallery

University of Tasmania,  
Level 1, Building D,  
16-20 Mooreville Road

### Burnie Arts & Function

### Centre – Arts Theatre

77-79 Wilmot Street

### Burnie Arts & Function

### Centre – Town Hall

77-79 Wilmot Street

### Burnie Arts & Function

### Centre – Burnie Regional

### Art Gallery

77-79 Wilmot Street

### Makers' Workshop

2 Bass Highway

## ISLANDS

### BRUNY ISLAND

### Adventure Bay Hall

5 Kellaway Road

### FLINDERS ISLAND

### Flinders Island Arts & Entertainment Centre

Patrick Street

### KING ISLAND

### King Island District High School Art Complex

21 George Street

# STAFF AND SUPPORTERS

ACN 092 326 951  
ABN 30 092 326 951  
71 Murray Street, Hobart  
GPO Box 1403  
Hobart, Tasmania, Australia, 7001  
+61 (0)3 6210 5700  
info@tendays.org.au  
tendays.org.au

## BOARD OF DIRECTORS

Chairman: Sir Guy Green  
Secretary: Scott Dawkins  
Board members: Peter Althaus,  
Bill Bleathman, Noel Frankham,  
Scott Gadd, Jacqui Allen,  
Jenny-Ellen Kennedy  
Past board member: Julia Farrell  
(until October 2014)

## ARTISTIC DIRECTOR

David Malacari

## EXECUTIVE DIRECTOR AND PRODUCER

Marcus Barker

## PROGRAMMING

Program Manager: Louisa Gordon  
Producer – Spiegeltent Program:  
Annemarie Pollard  
Program Coordinator: Sophia Hall  
Program Administrator:  
Emma Bannerman  
Visual Arts Coordinator: Jane Deeth

## OPERATIONS

Operations Manager:  
Kim O'Connell  
Production Manager Festival  
Events: Reuben Hopkins  
Production Manager –  
Spiegeltent: Toni Smith  
Logistics Manager: Paul Stephanus  
Operations Administrator:  
Emma Peel  
Front of House Coordinator:  
Carolyn Whamond

## MARKETING AND PUBLICITY

Clemenger Tasmania –  
Account Manager: Allison Wilson  
Marketing Executive Digital and  
Social Media: Clare Power  
Marketing Executive Community  
Engagement (July – September  
2014): Daen Kelly  
Publications Coordinator:  
Alison Murray  
Publicity: FONT PR, Lucinda Bray

Public Relations Assistant:  
Bonnie Whitton  
Interns: Blair Hyland, Bonnie Whitton,  
Alex McNeill and Thea Waldon

## DEVELOPMENT

Development and Partnership  
Manager (until October 2014):  
Melanie Knight

## ADMINISTRATION

Administration Officer:  
Morgan Barnsley  
Administration Officer  
(until June 2014): Anna Besteveaar  
Bookkeeper: Suzy Browne  
Ticketing Services Manager:  
Alice Moss

## DESIGN

Brand Identity, Digital  
and Graphic Design:



## PRODUCTION

IT Services: Anderson Morgan  
Printing: Mercury Walch  
At the time of printing many of the people who make the Tasmanian International Arts Festival and Spiegeltent possible are yet to be working for Ten Days. To all of you, a huge thank you in advance.  
Ten Days is grateful for the support of our Regional Touring Partner, Hydro Tasmania, in assisting us to share this festival state-wide.



## SPECIAL THANKS

Ten Days Volunteers: Thanks for your help in the Ten Days office, at events and on the road around Tasmania.  
We could not do it without you!  
Northern Stakeholder Group:  
Jo Archer, Leanne Arnott,  
Vanessa Cahoon, Louise Clark,  
Chris Griffin, Julie Kilinc, Greg Leong, Robin Lohrey, Mary Machen, Richard Mulvaney, Eamonn Seddon and Mandy Shepard.  
North West Stakeholder Group:  
Geoff Dobson, Chris Frankcombe, Debbie Kershaw, Suzy Paravicini, Lynne Price, Ellie Ray, Dianne Sheehan

## IN APPRECIATION

The following visual arts events acknowledge the support of these government, arts and educational bodies:



These projects are supported through Arts Tasmania by the Minister for the Arts:  
*Burnie Print Prize 2015; Colonial Afterlives; Connected; Indeco in the Making; Landscape is a Conversation; ReViewing; superslow; Made in China, Australia*



These projects have been assisted by the Australian Government through the Australia Council, its arts funding and advisory body:  
*Colonial Afterlives; Things I once knew; Made in China, Australia*



*Landscape is a conversation; Stand Back*



*Mad women in the attic?; Plato's Cave at the Earl; superslow*



*Colonial Afterlives; Made in China, Australia; superslow*



*Colonial Afterlives; Made in China, Australia; Outside Thoughts*



# PARTNERSHIP & PHILANTHROPY

## INVITATION TO BE PART OF TEN DAYS

Ten Days is a not for profit organisation, and we rely on support from a variety of sources to ensure that Tasmanian communities are treated to exciting, moving and inspiring shows. Our purpose is to strengthen the local arts sector and preserve Tasmania's place on the world stage. Since its inception in 2001, Ten Days has presented the works of an outstanding range of international, national and local artists to audiences state-wide.

A partnership with Ten Days is established on a mutually beneficial foundation of shared objectives. The donations we receive from generous individuals enable us to deliver the state-wide Tasmanian International Arts Festival, as well as year-round events, art exhibitions in Gallery Ten, and the splendidiferous Spiegeltent. Our supporters get the chance to engage with our productions in unique and special ways.

We have a giving program to cater for everybody and every budget, and each donation received is recognised on the website and festival brochure.

## INDIVIDUAL GIVING PROGRAMS

### ISLANDERS

Ten Days' *Islanders* program is tax deductible and supports a different aspect of the artistic program each festival. In 2015, *Islanders* will be assisting us to deliver *And Another Thing...* which gives audiences the chance to get up close with touring artists.

Through a range of talks, workshops, master classes

and mentoring opportunities, *And Another Thing...* facilitates greater participation and understanding of the arts and culture through skills development and open enquiry.

Through your support these activities will link artists with locals to share, exchange and inspire creativity long-term. There are four different islands aligning to each level of donation: Schouten Islander, Tasman Islander, Maria Islander and Macquarie Islander.

### Schouten

Dr & Mrs Don and  
Jasmine Hempton  
Mr Garry Forward and  
Ms Penney Furrage  
Mr John & Mrs Diana Hooper  
Mr John Heathcote  
Dr Margaret Nelson  
Ms Vicki Randell  
Ms Margot Dawson  
Anonymous

### Tasman

Ms Anne Galer  
Ms Anne O'Byrne  
The Hon. Mike Gaffney

### Macquarie

Julia Farrell  
Sir Guy and Lady Ros Green  
Anonymous

### PHILOS

Philos in Greek means 'loving' or 'friendly', and is at the root of the word 'philanthropy'. Patrons of the *Philos* program play a more significant role in the development and support of the festival than just 'friends'. They are a crucial part of the artistic family of Tasmania, embodied by the biennial event.

By pledging financial support to Ten Days, *Philos Patrons* demonstrate a major commitment to nurturing and encouraging the cultural engagement and creativity of Tasmanians. *Philos Patrons* become significant and vital members of the Ten Days creative community.

## PHILOS PATRONS

Mr & Mrs Peter and Ruth Althaus  
Bridestowe Estate  
Hobart Eye Surgeons  
Mr & Mrs Andrew  
and Marguerite Hunn  
Dr & Mrs Tony  
and Jacqui Patiniotis  
Mr John Dickens  
and Dr Ian Payne  
Bill and Frances Watkins

*Thank you also to our  
Philos Patrons that wish  
to remain Anonymous*

## BEQUESTS

A bequest, or legacy, is a gift of money and asset that you leave in your Will. By providing for Ten Days in your Will, you will not only make a personal contribution to the joy, delight and celebration of the festival, you will also help us to ensure that future generations of Tasmanian artists and audiences benefit from your generosity. If you feel passionately about the impact that the arts can have on the lives of Tasmanians and the growth in confidence that ensues from involvement in making work and participating in creativity, then your gift will support us to continue to present and deliver a program that is relevant, accessible and reflects the lives and personal experiences of all of those who take part.

## CORPORATE PARTNERSHIPS

Ten Days values the quality of each relationship it has with our corporate partners of all sizes. We endeavour to exceed the expectations of each partner by delivering individually tailored and mutually beneficial partnerships with tangible business benefits that demonstrate return on investment.

Like the festival itself, the Ten Days partnership framework is unique. The native Tasmanian woods form the structure and partnership levels of the Ten Days Tree. The use of these names reflects our aim to develop the cultural landscape of the Tasmanian community, to create opportunities for local artists and practitioners and to nurture the creative ecology connecting audiences state-wide.

1. Huon Pine partners
2. Blackwood partners
3. Myrtle partners
4. Sassafras partners
5. Celery Top Pine partners
6. Blue Gum partners

Like the trees whose names they bear, all of Ten Days' partners play a vital role in the ecology of the festival, allowing the artistic program to grow.

Enquiries:  
Please call 03 6210 5700.



# THE FESTIVAL THAT STARTED IT ALL!

lonely planet  
**Top 10 Regions  
Best in Travel  
2015**  
Tasmania

It was an audacious idea, nearly fifteen years ago, to gather the world's foremost artists and performers together to create a festival that spanned this remote and untamed island at the ends of the earth. Today, Tasmania is a must-see destination for arts and festival lovers world-wide.

From off the beaten track to on the map, Ten Days has championed Tasmania's artists and arts communities state-wide to help create the culturally vibrant and dynamic Tasmania we are all so proud of today.

Now, *Lonely Planet's Best in Travel 2015* has named Tasmania one of its 'Top 10 Regions in the World to Visit in 2015' and recommends our biennial state-wide arts festival, 20-29 March 2015.

We are proud of this recognition and welcome you to join us to experience a festival like no other, in a place like nowhere else – Tasmania.

# PARTNERS

---



---

## HUON PINE



---

## BLACKWOOD



---

## MYRTLE



---

## SASSAFRAS



---

## CELERY TOP PINE



---

## TASMANIAN BLUE GUM



TASMANIAN RAIN®



---

## COUNCILS



---

## MEDIA AND PROMOTIONAL PARTNERS



---

## VENUE PARTNERS



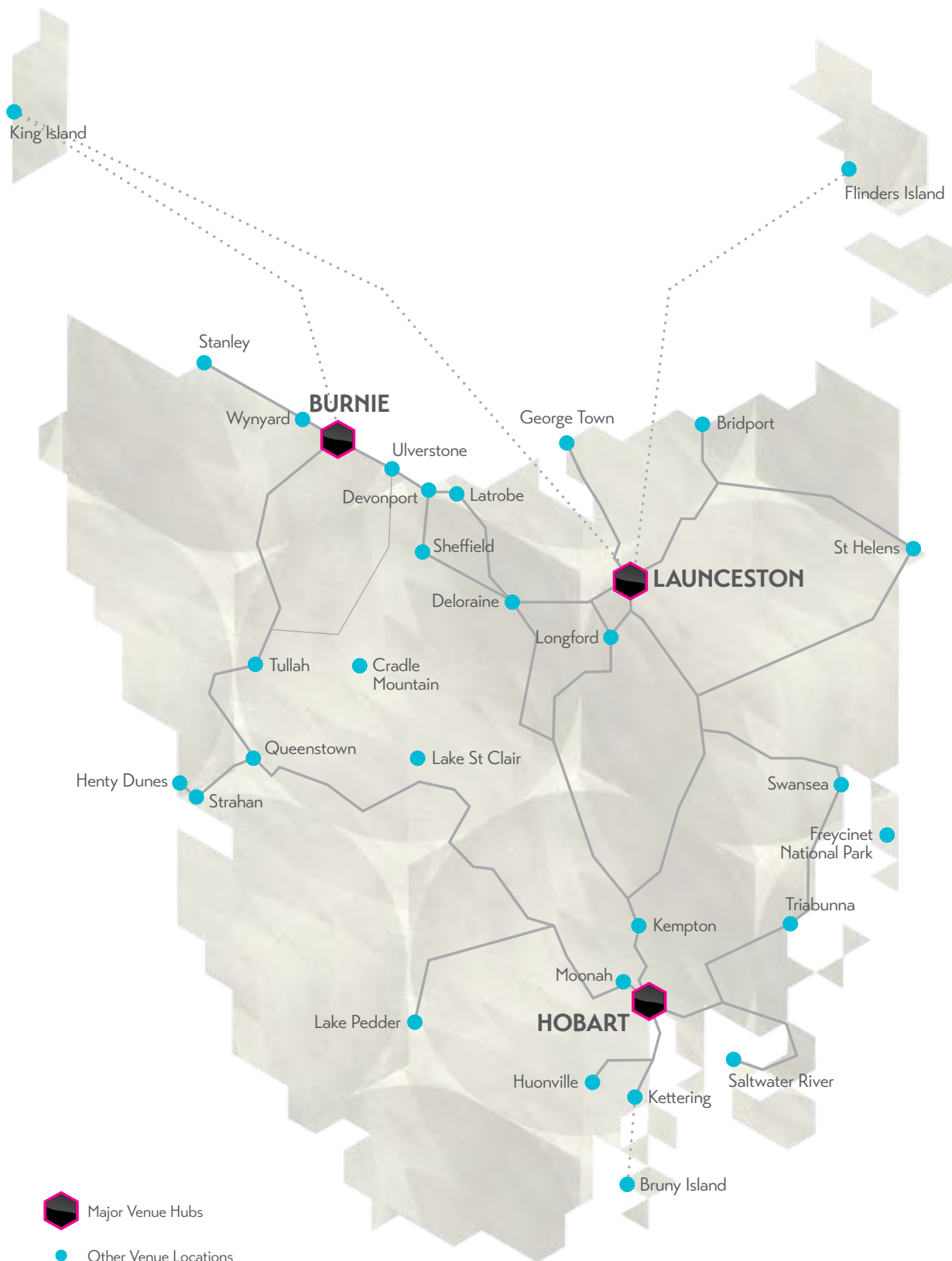
---

## EAGLES NEST RETREAT, PORT ARTHUR HISTORIC SITE MANAGEMENT AUTHORITY, TULLAH LAKESIDE LODGE

EVENT PLANNER	Pg	FRI 13	SAT 14	SUN 15
A TASTE OF ITALY	26	Latrobe Memorial Hall 7.30pm	Stanley Town Hall 7.30pm	Burnie BAFC Town Hall 2.30pm
SPIEGEL SIDESHOW AT THE BAFC: BEYOND	38			
SPIRIT OF INDIA	33			
		THU 19	FRI 20	SAT 21
6000 TO 1	19			
ACOUSTIC LIFE OF SHEDS	27			Wynyard 5 sheds perms from 10am/11.30am
ALZHEIMER SYMPHONY	10			Bruny Island Adventure Bay Hall 7.30pm
BACK COUNTRY	44	Rosny The Barn 11am-5pm	Rosny The Barn 11am-5pm	Rosny The Barn 11am-5pm
BLUE ANGEL	14-15			
BURNIE PRINT PRIZE	48	Burnie Regional Art Gallery 10am-4.30pm	Burnie Regional Art Gallery 10am-4.30pm	Burnie Regional Art Gallery 1.30pm-4.30pm
CALLS ACROSS THE ISLAND	28-29	Sheffield Eagles Nest Retreat 7pm	Stanley The Barracks 7pm	Cradle Mountain Dove Lake Boatshed 7pm
COLONIAL AFTERLIVES	43	Hobart Long Gallery 10am-5pm	Hobart Long Gallery 10am-5pm	Hobart Long Gallery 10am-5pm
CONNECTED	48	Hobart 146 ArtSpace 9am-5pm	Hobart 146 ArtSpace 9am-5pm	
DEMENTIA 13	4-5			
DIRTSONG	30-31			
EL SON ENTERO	22			
EPISODES	18		St Helens Portland Memorial Hall 7pm	Bridport Bridport Community Hall 7pm
ESSENTIALLY ELGAR	26			
DRAWING: ATMOSPHERES OF A SALIENT LANDSCAPE	48	Burnie Makers' Space 9am-5pm The Atrium Gallery 9am-5pm	Burnie Makers' Space 9am-5pm The Atrium Gallery 9am-5pm	Burnie Makers' Space 9am-5pm
HABITS AND HABITAT	42		Launceston QVM Inveresk 10am-4pm	Launceston QVM Inveresk 10am-4pm
HAMLET, DE LOS ANDES	8-9		Hobart Theatre Royal 7.30pm	Hobart Theatre Royal 7.30pm
HIDDEN CITIES	6			Hobart CBD 8pm & 10pm
I THINK I CAN	11		Hobart Elizabeth Mall 10am-1pm & 5pm-8pm	Hobart Elizabeth Mall 10am-1pm & 2pm-5pm
INDECO IN THE MAKING – TWO DECADES OF DESIGN	49	Launceston Design Tasmania 9.30am-5.30pm	Launceston Design Tasmania 9.30am-5.30pm	Launceston Design Tasmania 10am-4pm
INSIDE OUT	45	Launceston Academy Gallery 9am-5pm	Launceston Academy Gallery 9am-5pm	Launceston Academy Gallery 1am-4pm
LANDSCAPE IS A CONVERSATION	44			Queenstown LARQ 2pm-6pm
MAD WOMEN IN THE ATTIC?	46	Hobart Plimsoll Gallery 12pm-5pm	Hobart Plimsoll Gallery 12pm-5pm	Hobart Plimsoll Gallery 12pm-5pm
MADE IN CHINA, AUSTRALIA	46	Launceston QV Art Gallery Royal Park 10am-4pm	Launceston QV Art Gallery Royal Park 10am-4pm	Launceston QV Art Gallery Royal Park 10am-4pm
MEMENTO MORI: ART, MEDICINE AND THE BODY	50	Hobart Allport Library and Museum of Fine Arts 9.30am-5pm	Hobart Allport Library and Museum of Fine Arts 9.30am-5pm	Hobart Allport Library and Museum of Fine Arts 9.30am-2pm
OUTSIDE THOUGHTS	43	Hobart Contemporary Art Tasmania 12pm-5pm	Hobart Contemporary Art Tasmania 12pm-5pm	Hobart Contemporary Art Tasmania 12pm-5pm
PAJ HOOB (FLOWER ROOM #2)	47	Hobart Gallery Ten 10am-5pm	Hobart Gallery Ten 10am-5pm	Hobart Gallery Ten 10am-1pm
PASAJE	23			
PLATO'S CAVE AT THE EARL	50		Launceston Festival Club at the Earl 10am-4pm	Launceston Festival Club at the Earl 10am-1pm
RAWSPACE	40			
RELEASE DATE: HISTORY, MEMORY, LONGFORD	50		Longford dusk-10pm	Longford dusk-10pm
REORDER	41			Triabunna Spring Bay Mill 10am-6pm
REVIEWING	45	Devonport Regional Gallery 10am-5pm	Devonport Regional Gallery 10am-5pm	Devonport Regional Gallery 12pm-5pm
RIISING	16-17		Launceston Princess Theatre 8pm	Launceston Princess Theatre 8pm
TAN DUN'S WOLF TOTEM	24-25			Hobart Federation Concert Hall 7.30pm
THE BODY AS A RIDDLE	20			Launceston Harvest Farmers' Market 9am-12pm
THE CARDINALS	12-13	Launceston St John's Church 7pm	Launceston St John's Church 7pm	Launceston St John's Church 7pm
TYO FIVE-O CELEBRATION CONCERT	32			
SPIEGEL SIDESHOW AT THE FESTIVAL CLUB AT THE EARL: SPIEGEL UP CLOSE	39		Launceston Earl Arts Centre	Launceston Earl Arts Centre
SPIEGEL SIDESHOW AT THE DECC: INHERITANCE	39		Devonport Town Hall Theatre 8pm	
STAND BACK	47	Moonah Arts Centre	Moonah Arts Centre	Moonah Arts Centre
SUPERSLOW	47	Hobart Kelly's Garden 10am-5pm	Hobart Kelly's Garden 10am-5pm	Hobart Kelly's Garden 10am-3pm
SWAMP JUICE	7		Flinders Island Arts & Entertainment Centre 7pm	
TASMANIAN GUITAR TRIO – TOUCHDOWN IN KETTERING	33			
THEATRE NORTH FRINGE AT THE EARL	40			
THINGS I ONCE KNEW	42		Hobart TMAG 10am-4pm	Hobart TMAG 10am-4pm
THINK BIG - LIVE LIGHT	49		Hobart Pop Up Venue	Hobart Pop Up Venue
UNDERCURRENTS	49		Hobart Maritime Museum of Tasmania 9am-5pm	Hobart Maritime Museum of Tasmania 9am-5pm
WATERMARK	7			

MON 16	TUE 17	WED 18	
	Burnie BAFC Arts Theatre 7pm Hobart Theatre Royal 7.30pm	Burnie BAFC Arts Theatre 7pm	
SUN 22	MON 23	TUE 24	WED 25
Wynyard 5 sheds perfs from 10am/11.30am Huonville Town Hall 7.30pm Rosny The Barn 11am-5pm	Rosny The Barn 11am-5pm	Kempton Memorial Hall 7.30pm Rosny The Barn 11am-5pm Hobart Astor Hotel Concert 8.30pm Burnie Regional Art Gallery 10am-4.30pm Lake St Clair Jetty 7pm Hobart Long Gallery 10am-5pm Hobart 146 ArtSpace 9am-5pm Launceston Princess Theatre 8pm	Launceston Sawtooth ARI 7.30pm Deloraine Little Theatre 7.30pm Rosny The Barn 11am-5pm Hobart Astor Hotel Concert 8.30pm Burnie Regional Art Gallery 10am-4.30pm Hobart Long Gallery 10am-5pm Hobart 146 ArtSpace 9am-5pm Launceston Princess Theatre 8pm
	George Town Memorial Hall 7pm	Burnie BAFC Town Hall 8pm Ulverstone Gnomon Pavilion 7pm	Stanley Town Hall 7pm
Burnie Makers' Space 9am-5pm Launceston QVM Inveresk 10am-4pm Hobart Theatre Royal 5pm Hobart CBD 8pm Hobart Elizabeth Mall 10am-1pm & 2pm-5pm Launceston Design Tasmania 10am-4pm	Burnie Makers' Space 9am-5pm The Atrium Gallery 9am-5pm Launceston QVM Inveresk 10am-4pm Hobart Theatre Royal 7.30pm Hobart Elizabeth Mall 10am-1pm & 2pm-5pm Launceston Design Tasmania 9.30am-5.30pm Launceston Academy Gallery 9am-5pm Queenstown LARQ 2pm-6pm Hobart Plimsoll Gallery 12pm-5pm Launceston QV Art Gallery Royal Park 10am-4pm Hobart Contemporary Art Tasmania 12pm-5pm Hobart Gallery Ten 10am-5pm	Burnie Makers' Space 9am-5pm The Atrium Gallery 9am-5pm Launceston QVM Inveresk 10am-4pm Hobart CBD 7.30pm Launceston Design Tasmania 9.30am-5.30pm Launceston Academy Gallery 9am-5pm Queenstown LARQ 2pm-6pm Launceston QV Art Gallery Royal Park 10am-4pm Hobart Allport Library and Museum of Fine Arts 9.30am-5pm Hobart Contemporary Art Tasmania 12pm-5pm Hobart Gallery Ten 10am-5pm Launceston Festival Club at the Earl 10am-4pm	Burnie Makers' Space 9am-5pm The Atrium Gallery 9am-5pm Launceston QVM Inveresk 10am-4pm Hobart CBD 7.30pm Launceston Design Tasmania 9.30am-5.30pm Launceston Academy Gallery 9am-5pm Queenstown LARQ 2pm-6pm Hobart Plimsoll Gallery 12pm-5pm Launceston QV Art Gallery Royal Park 10am-4pm Hobart Allport Library and Museum of Fine Arts 9.30am-5pm Hobart Contemporary Art Tasmania 12pm-5pm Hobart Gallery Ten 10am-5pm Devonport DECC - Town Hall Theatre 7.30pm Launceston Festival Club at the Earl 10am-4pm
Longford dusk-10pm Triabunna Spring Bay Mill 10am-6pm Devonport Regional Gallery 1pm-5pm	Longford dusk-10pm Triabunna Spring Bay Mill 10am-6pm Devonport Regional Gallery 10am-5pm	Triabunna Spring Bay Mill 10am-6pm Devonport Regional Gallery 10am-5pm	Triabunna Spring Bay Mill 10am-6pm Devonport Regional Gallery 10am-5pm
			Hobart St David's Cathedral 7.30pm
Launceston Earl Arts Centre			
Moonah Arts Centre Hobart Kelly's Garden 10am-3pm Kettering Community Hall 3pm	Moonah Arts Centre Hobart Kelly's Garden 10am-5pm King Island District High School Art Complex 7pm	Moonah Arts Centre Hobart Kelly's Garden 10am-5pm	Moonah Arts Centre Hobart Kelly's Garden 10am-5pm Moonah Arts Centre 7pm
Hobart TMAG 10am-4pm Hobart Pop Up Venue Hobart Maritime Museum of Tasmania 9am-5pm	Hobart Pop Up Venue Hobart Maritime Museum of Tasmania 9am-5pm	Hobart TMAG 10am-4pm Hobart Pop Up Venue Hobart Maritime Museum of Tasmania 9am-5pm	Hobart TMAG 10am-4pm Hobart Pop Up Venue Hobart Maritime Museum of Tasmania 9am-5pm

THU 26	FRI 27	SAT 28	SUN 29
Launceston Sawtooth ARI 7.30pm	Launceston Sawtooth ARI 7.30pm	Launceston Sawtooth ARI 7.30pm	Launceston Sawtooth ARI 7.30pm
Devonport Town Hall Theatre 7.30pm		Wynyard 5 sheds perfs from 10am/11.30am	Wynyard 5 sheds perfs from 10am/11.30am
Rosny The Barn 11am-5pm	Rosny The Barn 11am-5pm	Swansea Town Hall 7.30pm	Rosny The Barn 11am-5pm
Hobart Astor Hotel Concert 8.30pm	Hobart Astor Hotel Concert 8.30pm	Rosny The Barn 11am-5pm	Hobart Astor Hotel Concert 8.30pm
Burnie Regional Art Gallery 10am-4.30pm	Burnie Regional Art Gallery 10am-4.30pm	Hobart Astor Hotel Concert 8.30pm	Burnie Regional Art Gallery 1.30pm-4.30pm
Lake Pedder Ted's Beach 7pm		Burnie Regional Art Gallery 1.30pm-4.30pm	Burnie Regional Art Gallery 1.30pm-4.30pm
Hobart Long Gallery 10am-5pm	Hobart Long Gallery 10am-5pm		Saltwater River Coal Mines Historic Site 7pm
Hobart 146 ArtSpace 9am-5pm	Hobart 146 ArtSpace 9am-5pm	Hobart Long Gallery 10am-5pm	Hobart Long Gallery 10am-5pm
	Hobart Wrest Point Entertainment Centre 8pm	Hobart Wrest Point Entertainment Centre 8pm	Hobart Wrest Point Entertainment Centre 5pm
	Launceston Albert Hall 7.30pm	Hobart Federation Concert Hall 7.30pm	
	Moonah Arts Centre 7pm	Triabunna Seafest 5pm	Moonah Taste of the World Festival 1pm
	Hobart Federation Concert Hall 7.30pm	Moonah Arts Centre 7pm	
Burnie Makers' Space 9am-5pm	Burnie Makers' Space 9am-5pm		Burnie Makers' Space 9am-5pm
The Atrium Gallery 9am-5pm	The Atrium Gallery 9am-5pm	Burnie Makers' Space 9am-5pm	
Launceston QVM Inveresk 10am-4pm	Launceston QVM Inveresk 10am-4pm	Launceston QVM Inveresk 10am-4pm	Launceston QVM Inveresk 10am-4pm
Burnie BAFC Theatre 8pm	Burnie BAFC Theatre 8pm		
Hobart CBD 8pm & 10pm & Midnight	Hobart CBD 8pm & 10pm	Hobart CBD 8pm & 10pm	Hobart CBD 8pm
	Burnie BAFC Back Gallery 10am-1pm, 5pm-8pm	Burnie BAFC Back Gallery 10am-1pm, 2pm-5pm	Burnie BAFC Back Gallery 10am-1pm, 2pm-5pm
Launceston Design Tasmania 9.30am-5.30pm	Launceston Design Tasmania 9.30am-5.30pm	Launceston Design Tasmania 10am-4pm	Launceston Design Tasmania 10am-4pm
Launceston Academy Gallery 9am-5pm	Launceston Academy Gallery 9am-5pm		
Queenstown LARQ 2pm-6pm	Queenstown LARQ 2pm-6pm	Launceston Academy Gallery 1am-4pm	Queenstown LARQ 2pm-6pm
Hobart Plimsoll Gallery 12pm-5pm	Hobart Plimsoll Gallery 12pm-5pm	Queenstown LARQ 2pm-6pm	Queenstown LARQ 2pm-6pm
Launceston QV Art Gallery Royal Park 10am-4pm	Launceston QV Art Gallery Royal Park 10am-4pm	Hobart Plimsoll Gallery 12pm-5pm	Hobart Plimsoll Gallery 12pm-5pm
Hobart Allport Library and Museum of Fine Arts 9.30am-5pm	Hobart Allport Library and Museum of Fine Arts 9.30am-5pm	Launceston QV Art Gallery Royal Park 10am-4pm	Launceston QV Art Gallery Royal Park 10am-4pm
Hobart Contemporary Art Tasmania 12pm-5pm	Hobart Contemporary Art Tasmania 12pm-5pm	Hobart Allport Library and Museum of Fine Arts 9.30am-2pm	
Hobart Gallery Ten 10am-5pm	Hobart Gallery Ten 10am-5pm	Hobart Contemporary Art Tasmania 12pm-5pm	Hobart Contemporary Art Tasmania 12pm-5pm
Launceston Princess Theatre 8pm	Hobart Wrest Point Showroom 7.30pm	Hobart Gallery Ten 10am-1pm	
Launceston Festival Club at the Earl 10am-4pm	Launceston Festival Club at the Earl 10am-4pm	Launceston Festival Club at the Earl 10am-1pm	Launceston Festival Club at the Earl 10am-1pm
Hobart Theatre Royal Backspace 6pm	Hobart Theatre Royal Backspace 6pm	Hobart Theatre Royal Backspace 6pm	
Triabunna Spring Bay Mill 10am-6pm	Triabunna Spring Bay Mill 10am-6pm		
Devonport Regional Gallery 10am-5pm	Devonport Regional Gallery 10am-5pm	Triabunna Spring Bay Mill 10am-6pm	Triabunna Spring Bay Mill 10am-6pm
Hobart Theatre Royal 7.30pm	Hobart Theatre Royal 7.30pm	Devonport Regional Gallery 12pm-5pm	Devonport Regional Gallery 1pm-5pm
		Hobart Theatre Royal 7.30pm	Hobart Theatre Royal 5pm
			Moonah Taste of the World Festival 12pm-3pm
Hobart St David's Cathedral 7.30pm	Hobart St David's Cathedral 7.30pm	Hobart St David's Cathedral 7.30pm	Launceston Princess Theatre 4pm
		Burnie BAFC Town Hall 7pm	
Moonah Arts Centre	Moonah Arts Centre	Moonah Arts Centre	Moonah Arts Centre
Hobart Kelly's Garden 10am-5pm	Hobart Kelly's Garden 10am-5pm	Hobart Kelly's Garden 10am-3pm	Hobart Kelly's Garden 10am-3pm
Swansea Town Hall 7pm	St Helens Portland Hall 7pm	Deloraine Little Theatre 7pm	
	Launceston Earl Arts Centre Transgender Seeking 8pm		Launceston Earl Arts Centre Mudlark One Day Project 7.30pm
Hobart TMAG 10am-4pm	Hobart TMAG 10am-4pm	Hobart TMAG 10am-4pm	Hobart TMAG 10am-4pm
Hobart Pop Up Venue	Hobart Pop Up Venue	Hobart Pop Up Venue	Hobart Pop Up Venue
Hobart Maritime Museum of Tasmania 9am-5pm	Hobart Maritime Museum of Tasmania 9am-5pm	Hobart Maritime Museum of Tasmania 9am-5pm	Hobart Maritime Museum of Tasmania 9am-5pm
Queenstown Paragon 7.30pm	Queenstown Paragon 7.30pm	Queenstown Paragon 7.30pm	



Presented by



Tickets at

[TENDAYS.ORG.AU](https://tendays.org.au)