



TENDAYS
ON THE ISLAND

2019 PROGRAM

NORTHWEST 08—11 MARCH
NORTHEAST 15—17 MARCH
SOUTH 22—24 MARCH

TENDAYS.ORG.AU

TEN DAYS ON THE ISLAND

2019

2019

NE

NW

S

TEN DAYS ON THE ISLAND



The Hodgman Liberal Government is a strong supporter of Tasmania's growing cultural and creative sector.

In 2017, the Government committed additional funding of \$500 000 per annum to Ten Days on the Island, assisting the organisation to transition to new approaches and repositioning the Festival to focus primarily on regional Tasmania.

The 2019 Ten Days on the Island Festival, delivered for the first time as an epic 10-day adventure across three weekends in Tasmania's three regional heartlands, is a ground-breaking model that will set new standards for access and participation in the arts. With programs exclusive to each region, Tasmanians and visitors will be encouraged to travel and enjoy creative and cultural arts experiences that reflect and respond to local places.

Ten Days will bring performances, exhibitions, workshops, masterclasses and floor talks with artists and other events to cities, towns and villages across the State.

I hope you will take advantage of the opportunity to experience what the Festival has to offer and involve yourself in the amazing range of arts activities and experiences statewide.

Ten Days, our festival pioneer, continues to provide opportunities for Tasmanian artists to create new work for an international program, delivers extraordinary experiences for all Tasmanians, and adds great value to our Tasmanian brand.

I look forward to sharing some of these truly impressive arts experiences with you in March.

Hon Elise Archer MP
Minister for the Arts



Cultural and artistic activities have long played an important role in the lives of Tasmanian communities. In recent years they have also been at the forefront of the image that Tasmania presents to the rest of Australia, and to the wider world.

Ten Days on the Island is very proud of the contribution it has made and continues to make to Tasmania. That contribution is changing in response to the evolution of the festival landscape in Tasmania.

In 2017 we relocated our office to Burnie at the Makers' Workshop as part of the University of Tasmania's Cradle Coast Campus. From here we have begun to craft a different role for the State's international arts festival. We have reaffirmed our commitment to presenting work in and drawing work from Tasmania's regional places.

Our new model, a 10-day festival over three weekends, allows us to develop and present a distinctively different program for each region, which means that we are responding to the interests of audiences in a more considered way and investing as much in the North West as in the North East and the South, which is quite a departure from previous approaches.

Our 2019 Festival is audacious and ambitious. It asserts that the people of Burnie are keen to see extraordinary international art in their city and invites Tasmanians from other parts of the State to join in celebration with them. It notes that the North East is dotted with marvellous sites for art close to Launceston and encourages visitors to share special events with locals. It recognises that Hobart sees itself as a capital for the arts and brings exceptional experiences to new locations around the city.

We believe that the arts help to enliven regional communities and activate regional economies by attracting audiences, increasing tourism, and creating employment. The arts also contribute to regional distinctiveness and help build civic pride.

I warmly invite you to join us on an amazing journey around the State.

Saul Eslake
Chair, Ten Days on the Island



WELCOME TO OUR 10TH FESTIVAL

An epic adventure over three weekends through the heartlands of Tasmania

Our epic adventure begins on 8 March as dawn lights the northern horizon. It entices the adventurer to explore the imaginative landscapes of vineyards, wilderness and familiar streets, into tulip sheds, local community halls, galleries and darkened theatres. Three weekends later, our journey ends with a mystical, mythical flourish in the South.

The words ADVENTURE and HEARTLAND hold the key to squeezing every delicious drop from this very juicy Festival. Oxford defines adventure as 'an unusual, exciting or daring experience', but the idea of adventure goes far beyond that – it has wild, life-changing, heart-pumping potential. We humans are most alive when our arms are wide open to experiences that might be risky, reckless, even scary. Moments of love, of exhilaration, of abandon. And the best adventures are those we share with others, because we humans also need community and connectedness. We need each other. We need our neighbourhoods, a sense of belonging, our relationships. Whether it's an urban jungle or a remote rural retreat, we need our heartlands: the places and landscapes into which our lives and stories are woven – places of the heart.

Our 10th Ten Days on the Island Festival uniquely celebrates the creative brilliance of artists and art-experiences from around Tasmania, Australia and the world. Tasmania, this is YOUR Festival – we hope you enjoy it as much as we have enjoyed making it for you.

Lindy, Jane, Vernon
and the Ten Days on the Island team

Vernon Guest Creative Producer
Jane Haley CEO
Lindy Hume Artistic Director



IMAGE: MICHELLE DUPONT

CONTENTS

- 1 WELCOME
- 3 HOW TO NAVIGATE
- 7 mapali
- 8 HERE SHE IS
- 9 ACOUSTIC LIFE OF SHEDS
- 11 IN PURSUIT OF VENUS
- 13 THE PULP FESTIVAL LOUNGE
- 14 SHOREWELL PRESENTS
- 15 OUT OF CHAOS...
- 17 WOMEN OF THE ISLAND
- 19 NIGHTINGALE AND THE ROSE
- 20 LOLA GREENO
- 21 BUSHLAND
- 25 SUPER NIGHT SHOT
- 27 ENCHANTED ISLAND
- 29 INTIMATE EPICS
- 32 DARK RITUALS
- 33 PETER AND THE WOLF
- 34 BABA YAGA
- 35 THE CHILDREN'S PARTY
- 36 NOWHERE
- 39 THE MARES
- 41 DUST
- 43 WHAT IS TASMANIA THINKING ABOUT?
- 45 EYES AS BIG AS PLATES
- 47 A WEEKEND IN THE LIFE OF A PIANO
- 49 COMPASSION
- 51 BREATHTAKING
- 52 BOŽO VREČO
- 53 PANDEMIC
- 54 THE STANCE
- 55 TICKET INFORMATION
- 57 PARTNERS
- 59 GOVERNMENT SUPPORT & PHILANTHROPY
- 60 MEET THE TEAM
- 61 FESTIVAL PLANNER

ACKNOWLEDGEMENT OF COUNTRY

ACKNOWLEDGEMENT OF COUNTRY

Every part of Australia is, always was and always will be, Aboriginal land. Our journey in *2019 across the magnificent islands of lutruwita Tasmania* goes hand in hand with our respectful acknowledgement of the significance of place and story to this country's First Nations artists and communities whose connection to Country is profound, inseparable, and central to Australia's cultural identity.

Every beach, mountain, bay, gorge, plain and river across each island has a story that resonates from its past through the present to the future. As a community gathering-place, a festival of arts, cultural exchange and celebration and as a site for the sharing of ideas and stories, *Ten Days on the Island* pays deep respect to the palawa – original owners and cultural custodians – of ALL the lands and waters across lutruwita (Tasmania) upon which our Festival takes place. In particular, we acknowledge the Pirinilapu people of the North West Coast, the Panina and Litarimirina people of the North, the Muwinina people of the South, and Palawa Elders.

DEVONPORT

mapali_p7
HERE SHE IS_p8
THE NIGHTINGALE AND THE ROSE_p19

CRADLE MOUNTAIN

BUSHLAND_p21

ZEEHAN

WOMEN OF THE ISLAND_p17

HOBART

WOMEN OF THE ISLAND_p17
BUSHLAND_p21
THE MARES_p39
EYES AS BIG AS PLATES_p45
COMPASSION_p49
BREATHTAKING_p51
BOŽO VREČO_p52
PANDEMIC_p53
THE STANCE_p54

ROSNY PARK

A WEEKEND IN THE LIFE OF A PIANO_p47

GLENORCHY

DUST_p41

SPRING BAY

BREATHTAKING_p51

HADSPEN

THE ILIAD OUT LOUD_p29

LONGFORD

CRIME SCENE_p29

LAUNCESTON

WOMEN OF THE ISLAND_p17
SUPER NIGHT SHOT_p25
DARK RITUALS_p32
PETER AND THE WOLF_p33
BABA YAGA_p34
THE CHILDREN'S PARTY_p35
NOWHERE_p36
CATARACT GORGE RESERVE
BUSHLAND_p21

EVANDALE

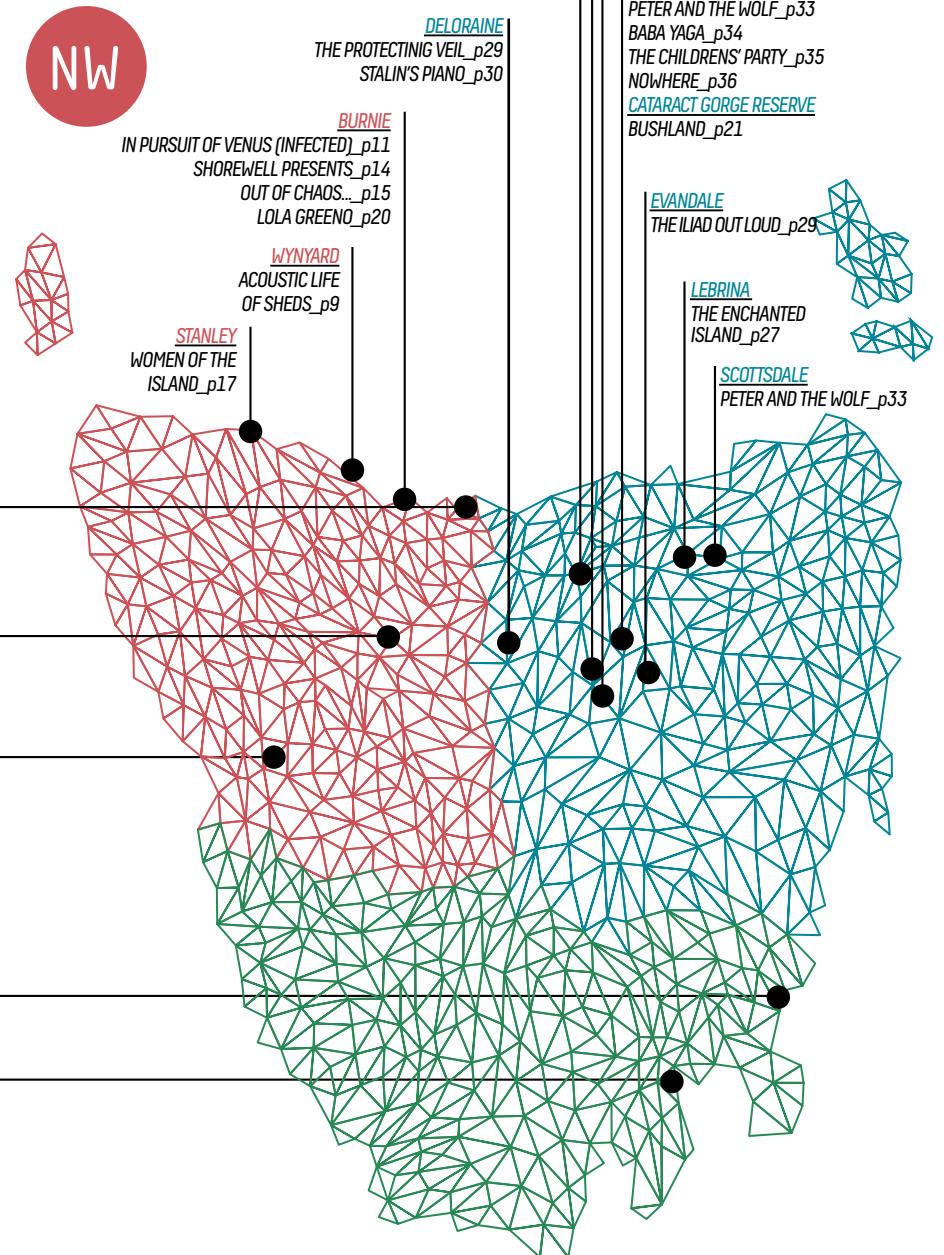
THE ILIAD OUT LOUD_p29

LEBRINA

THE ENCHANTED ISLAND_p27

SCOTTSDALE

PETER AND THE WOLF_p33



NORTH WEST

8-11 MARCH

IMAGE: TOURISM TASMANIA AND ALEX BEEM

Tasmania's **North West** is a spectacular tapestry of natural beauty – rugged coastline, rainforests, rolling valleys, lush pastures – and lively port cities and pretty rural towns. It's a place of entrepreneurship and hard work – mining, fishing, forestry, farming – and big-hearted people with a strong sense of family, neighbourhood and community.

*A festival is a meeting place,
a gathering ground,
a welcoming space.*

To mark the beginning of our epic Festival adventure, Ten Days on the Island has invited hundreds of local performers and community groups to gather *en masse* from across the North of the island at dawn, to breathe as one in a shared moment of reflection and ritual.

Join us for an unforgettable experience, celebrating the first light of day with music, dance, performance and poetry inspired by the elements that surround us – the sky, the sea, the winds and the landscape. This unique community performance, featuring Ulverstone's Slipstream Circus, will be co-created by Lindy Hume and Adam Wheeler, artistic directors of Ten Days on the Island and Tasdance, in collaboration with artist and cultural adviser David Mangenner Gough.

Set your alarm early on 8 March (International Women's Day) if you want to secure a good vantage point, because mapali - DAWN GATHERING begins as the sun rises at 7AM.

Ten Days on the Island, Tasdance and
Tiagarra Aboriginal Cultural Centre and Keeping Place present

T A S M A N I A

F R E E

DAWN GATHERING mapali

FESTIVAL OPENING 2019

FRI 8 MARCH
7AM
DEVONPORT SURF
LIFE SAVING CLUB
DURATION 50MIN



FREE

HERE SHE IS

On International Women's Day 2019 we pay tribute to the amazing women of the North West of Tasmania with a multidimensional artwork created by and about several generations of inspirational North West women, from our youngest girls to our senior stateswomen – heroines past and future.

We want to hear from YOU!

Here She Is is the grand vision of local artists Jessie Pangas and Anne Morrison, who will be inviting the public to share their memorabilia, photographs, stories and experiences throughout early 2019. With invited fellow artists, they will collage, stitch and weave together a visual map of the dynamic matrix of connections between women across our region and the world.

Here She Is will be unveiled to the public on 8 March for one weekend only. Workshops, discussions and story-sharing will continue to build on the artwork through the weekend.

8-11 MARCH

FRI 9AM-4.45PM

SAT-MON 9AM-2PM

DEVONPORT REGIONAL GALLERY

PARANAPLE ARTS CENTRE



FREE

Workshops

SAT 9 MARCH 9AM-2PM

SUN 10 MARCH 9AM-2PM

For more information visit:

[instagram.com/heresheisnwtas](https://www.instagram.com/heresheisnwtas)



T A S M A N I A

V I S U A L A R T S

Ten Days on the Island presents

Big hART

ACOUSTIC LIFE OF SHEDS

T A S M A N I A

M U S I C

Acoustic Life of Sheds is a promenade concert spanning 60 kms over four and a half hours along the arcadian North West coast. Exploring five sheds, the music is the response of composers, musicians and artists to these beautiful spaces.

Over the last two Ten Days on the Island Festivals, 'Sheds' has become a signature event of the North West region of Tasmania. Returning in 2019, the lineup includes Brian Ritchie, Heath Cullen, Maggie Abraham, Yyan Ng, Varuni Kulasekera, Aaron Hopper, Matt Hoy, Rachel Small, Paul Corfiatis, Jacob Rish and Telen Rodwell. They join *Sheds* veterans Lucky Oceans and Nick Haywood in an ever expanding array of artists passionate about these iconic micro concerts and the audiences' slow journey through the landscape to enjoy them.

You can take the complete five-shed tour, presented twice daily or follow your nose to any shed for the set performance times. Journeys depart at 9.45am and 11.15am from the information hub at Illume, 17254 Bass Highway, Boat Harbour.

VENUES

Sisters Creek
Lower Mount Hicks
Doctors Rocks
Wynyard
Table Cape

For more information about registration, locations, accessibility, route and related events visit:

acousticlifeofsheds.bighart.org



Winner of the 2018
Art Music Award for
Excellence in a
Regional Area



IMAGE: BETH SOMETIMES



*"This exquisite
immersive experience
is a must-see event."*

THE GUARDIAN

Exclusive to Burnie

Ten Days on the Island presents

AOTEAROA | NEW ZEALAND VISUAL ARTS

Lisa Reihana IN PURSUIT OF VENUS[INFECTED]

The visual arts centrepiece of Ten Days on the Island 2019 is the epic creation of leading Māori artist Lisa Reihana, a monumental contemporary masterpiece sought after by galleries around the world. Over 10 years in the making, *in Pursuit of Venus [infected]* was New Zealand's entry to the 2017 Venice Biennale.

Reihana's magnificent 17 metre, hour long video work juxtaposes idyllic island landscapes with imagined first encounters between Captain Cook's colonising officers, sailors and traders, and the Indigenous peoples of the Pacific, New Zealand and Australia. This powerful, thought-provoking 'counter-colonial' diorama coincides with the 250th anniversary of Cook's Pacific expeditions.

Tasmanian audiences can experience *in Pursuit of Venus [infected]* exclusively in Burnie, where it will be spectacularly installed in one of Tasmania's most iconic industrial buildings – the former Australian Pulp and Paper Mill on the Bass Highway.

8-24 MARCH

11AM-7PM

APPM SERVICES BUILDING
CNR REEVES ST AND MARINE TCE
BURNIE
TENDAYS.ORG.AU FOR ACCESS INFORMATION

FREE

IMAGE: LISA REIHANA
IN PURSUIT OF VENUS [INFECTED]
2015-17. INSTALLATION VIEW,
JOHN CURTIN GALLERY, PERTH,
AUSTRALIA 2018
PHOTOGRAPH BY BRAD COLEMAN
© LISA REIHANA
COURTESY ARTPROJECTS



THE PULP

FESTIVAL LOUNGE

JOIN US AT THE PULP

Burnie's iconic art deco APPM building was the beating heart of the town for decades. Now the 'Pulp' is back with a funky Festival makeover for the March long weekend as our pop-up social hub, The Pulp Festival Lounge...

The Pulp Festival Lounge is a relaxed, welcoming local place to meet friends before and after events, share a coffee, sit and read, enjoy a snack or a late-night glass of wine on the balcony. Join Artistic Director Lindy Hume in conversation with Festival artists. Visit tendays.org.au for a schedule of live music, talks and activities about our centrepiece artwork in *Pursuit of Venus [Infected]*, or any of the Festival events in the first weekend.

BURNIE REGIONAL ART GALLERY

Burnie Regional Art Gallery will be open throughout the opening weekend of the Festival, offering a diverse range of art-experiences for visitors and locals alike to enjoy. Burnie Regional Art Gallery will host the cutting-edge exhibition *Prosthetic Reality*, using the latest technology and featuring the distinctly trippy vision of Eyejack's founder, Burnie-raised artist SUTU - Stu Campbell.

Download the Eyejack app, wave your phone over the artworks and watch as they change, move, grow and morph before your eyes.

BURNIEARTS.NET/ART-GALLERY



IMAGE: MICHELLE DUPONT OF LONG-TERM SHOREWELL PARK RESIDENTS WAYNE AND CHERYL LOWERY

Ten Days on the Island and Urban Theatre Projects
with Burnie Community House present

SHOREWELL PRESENTS

T A S M A N I A

F R E E

**A one night only celebration
under the stars in Shorewell Park
for 100 lucky locals.**

Part dinner party, part blind date, part outdoor performance, *Shorewell Presents* is an evening of rich experiences and a fabulous three course menu featuring local produce prepared by Hilltop Catering in collaboration with Mark Gluyas from Hellyers Road Distillery. The evening promises special guests, live performances, conversations with new friends, and a sharing of stories that might surprise, delight and reveal new perspectives on life in the 'hood, the history and the future of Shorewell Park.

Invitations to Shorewell Presents will be issued in person in the coming months to just 100 Shorewell Park and Burnie residents chosen democratically by lottery – so listen up for your doorbell!

FRI 8 MARCH 14
6.30PM FOR A 7PM START

Urban Theatre Projects (UTP) is best known for connecting people through great storytelling and rich, shared experiences. UTP is company-in-residence with Ten Days on the Island for 2018-2021, and *Shorewell Presents* is the first part of a two-work commission in Burnie.

URBAN
THEATRE PROJECTS



OUT OF CHAOS

Australia's awe-inspiring physical theatre company Gravity & Other Myths is taking the world by storm

Now this award-winning team brings their spectacular World Premiere season of *Out of Chaos...* to Burnie.

Be prepared for live music and skillful acrobats pushing their physical limits and getting up-close and sweaty with the audience in a high energy performance that grapples with the tension between order and chaos in our lives. Grab the family and make your way to Burnie for your only opportunity in Tasmania to experience circus like you've never seen it before.

DIRECTOR DARCY GRANT

A U S T R A L I A

9-11 MARCH
SAT 7.30PM
SUN & MON 2PM
ARTS THEATRE, BURNIE ARTS
AND FUNCTION CENTRE, BURNIE



TICKETS
FULL \$34
CONCESSION \$29
FAMILY OF FOUR \$99



Australian Government
 Major Festivals Initiative

SUPPORTED BY:

This project has been assisted by the Australian Government's Major Festivals Initiative, managed by the Australia Council, its arts funding and advisory body, in association with the Confederation of Australian International Arts Festivals Inc., Adelaide Festival, Ten Days on the Island, Galway International Arts Festival (IRE), La Strada Graz Festival (AUT) and La Brèche, Pôle National Cirque de Normandie /Cherbourg-en-Cotentin (FR).

IMAGE: CHRIS HERZFELD



C I R C U S

Women Of The Island is a multi-award winning series of short documentaries (5-8 minutes each) celebrating the inspiring and untold stories of women who inhabit the island of Tasmania - stories as diverse, complex and interesting as the women themselves.



Ten Days on the Island presents

WOMEN OF THE ISLAND

Seeking to give a female voice to contemporary Tasmanian history, independent filmmaking collective Rebecca Thomson, Lara van Raay and Ninna Millikin created the first three episodes in 2017, receiving global accolades and awards festivals including LAWBFEST, UK Web Fest, Copenhagen Web Fest, and 150,000 online views.

Now, in partnership with Ten Days on the Island, the collective has produced 10 new films exploring the experiences of extraordinary women from diverse regions of Tasmania. These uplifting films will be shared for the first time at community screenings across Tasmania during the Festival, celebrating the women themselves and their local communities.

If you can't make it to one of the screenings, the films will be available online at womenoftheisland.com and shared through social media.



T A S M A N I A

F I L M

FRI 8 MARCH
7.30PM
GAITY THEATRE
ZEEHAN

SAT 9 MARCH
7.30PM
STANLEY TOWN HALL
STANLEY

NW

FRI 15 MARCH
7.30PM
SHOWGROUND HALL
EXETER

SAT 16 MARCH
7.30PM
DESIGN TASMANIA
LAUNCESTON

NE

SAT 23 MARCH
7.30PM
HOBART TOWN HALL
HOBART

SUN 24 MARCH
2PM
HOBART TOWN HALL
HOBART

S

TICKETS
FULL \$15
CONCESSION \$13.50
DURATION 70MINS

TENDAYS.ORG.AU FOR
ACCESS INFORMATION



A[C]F AUSTRALIAN
CULTURAL
FUND.ORG.AU



DEL KATHRYN BARTON: THE NIGHTINGALE AND THE ROSE

An ACMI touring exhibition

Devonport hosts the only Tasmanian stop on a national tour of this incredible movie/exhibition double bill. First, experience the award-winning short film *The Nightingale and The Rose* by Archibald Prize winner Del Kathryn Barton and acclaimed filmmaker Brendan Fletcher. Then lift the veil on the remarkable production process in a behind-the-scenes exhibition of original objects, entrancing artworks and handmade props. Based on Oscar Wilde's classic short story about unrequited love, sacrifice and feminine power, this magical animated picture features the voices of star actors Mia Wasikowska and David Wenham with haunting music from singer-songwriter Sarah Blasko.

16 MARCH-5 MAY
MON-FRI 7.30AM-4.45PM
SAT & SUN 9AM-2PM
DEVONPORT REGIONAL GALLERY
PARANAPLE ARTS CENTRE

DEVONPORT
REGIONAL
GALLERY

FREE

A U S T R A L I A

V I S U A L A R T S



IMAGE: DEL KATHRYN BARTON, *wilder grew her song* (detail) 2011-12. Image courtesy the artist and Roslyn Oxley9 Gallery

AQUARIUS
STUDIO

METHOD
STUDIOS

ARTAND FOUNDATION

Screen
Australia

ias

Visual Art
Logos

Australian Government
Visions of Australia

CREATIVE VICTORIA

acmi

acmi

FIVE SHELLS
FIVE BEACHES
FIVE NECKLACES

LOLA GREENO

University of Tasmania presents

waranta palawa, milaythina nika - mama mara katinas
this country is us, and we are this country - my five beaches

T A S M A N I A

V I S U A L A R T S

20

Lola Greeno's shell necklaces capture the timelessness and relevance of Tasmanian Aboriginal culture. They are both part of the physical and spiritual landscape of Tasmania. In this exhibition Lola reveals five ceremonial length necklaces representing each of the beaches where she collects her beloved maireener shells in North West Tasmania.

Handmade papers made from the coastal plants and seaweeds gathered at these beaches by celebrated Tasmanian papermaker, Joanna Gair, will form the backdrop for these ceremonial pieces, providing tangible clues to the nature of the gathering locations without full disclosure, in recognition of the importance of these secret locations in local palawa culture.

Join us as we explore these special places through Lola's work.

8 MARCH-7 APRIL
9AM-5PM
THE MAKERS' SPACE
MAKERS' WORKSHOP
BURNIE



FREE



UNIVERSITY of
TASMANIA

Ten Days on the Island presents
French & Mottershead

BUSHLAND

IMAGE: PAUL BLAKEMORE

UNITED KINGDOM

OUTDOOR AUDIO EXPERIENCE

22

Lie yourself down and soften into the grass

Listen to a timeless tale of a human body returning to the gently humming earth, after death. This is an absorbing audio journey by British art duo French & Mottershead, a lyrical and scientifically precise account of how the body steadily decomposes.

Originally set in the UK, *Bushland* is a new version tailored for the unique impacts of the Australian landscape, informed by local experts and Aboriginal knowledge. A seductive, meditative and curiously reassuring vision of how every death nourishes new life.

TICKETS
FULL \$15
CONCESSION \$13.50

DURATION ALLOW 45MINS

THIS IS AN OUTDOOR EVENT THAT
REQUIRES SOME BUSHWALKING.
PLEASE DRESS FOR THE WEATHER
AND WEAR APPROPRIATE SHOES.

AGE RECOMMENDATION 11 YEARS +

TENDAYS.ORG.AU
FOR ACCESS INFORMATION



8 -11 MARCH
10AM-5.20PM
CRADLE MOUNTAIN
WILDERNESS GALLERY

NW

15-17 MARCH
10AM-5.20PM
ROTUNDA
CATARACT GORGE RESERVE

NE

22-24 MARCH
10AM-5.20PM
THE SPRINGS
MOUNT WELLINGTON

S



15-17 MARCH

NORTH EAST

*With a rich and ancient history, Tasmania's **North East** is renowned for beautiful landforms – windswept dunes, lichen wrapped boulders, dense forests – and endless blue sea and skies. It's a proud family-friendly community that values its distinctiveness, honours its heritage, loves its theatre, music and dance, and rejoices in communal celebrations.*

IMAGE: ISKY AERIAL PHOTOGRAPHY

Ten Days on the Island presents

GOB SQUAD

SUPER NIGHT SHOT

GERMANY | UNITED KINGDOM

Night-time Launceston becomes a film set when Gob Squad's team of performer-activists takes to the streets to shoot an action adventure movie. The public unwittingly become co-stars in a film that elevates the banality of everyday life into the epic glamour and glitz of a big screen blockbuster. It's completely unpredictable - anything can happen, and usually does...

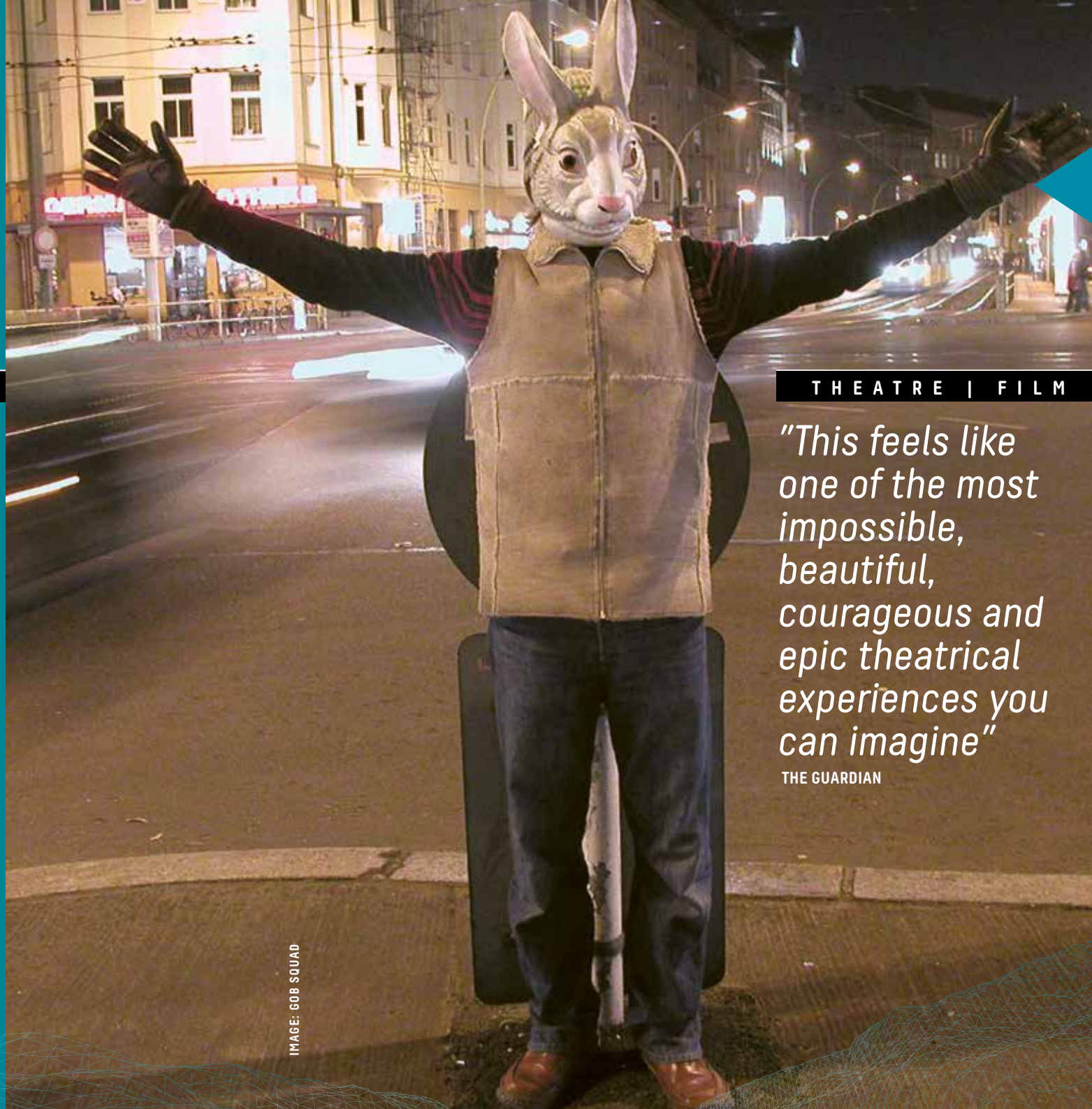
Super Night Shot has been performed in four languages on six continents, melting hearts in Siberia, Brazil, Bangalore, London, Sydney, Berlin and now ... Launceston! Don't miss this chance to catch the brilliant Gob Squad, one of the world's truly original performance collectives, in this now-classic work, exclusive to Ten Days on the Island.

15-17 MARCH
FRI & SAT 8.30PM
SUN 8PM
EARL ARTS CENTRE
LAUNCESTON
DURATION 60MINS

TICKETS
FULL \$29
CONCESSION \$26



GOETHE
INSTITUT



THEATRE | FILM

*"This feels like
one of the most
impossible,
beautiful,
courageous and
epic theatrical
experiences you
can imagine"*

THE GUARDIAN

IMAGE: GOB SQUAD

Ten Days on the Island presents

THE ENCHANTED ISLAND



IMAGE: JOSÉ NAVARRO

A special concert of Baroque opera in a magnificent setting, featuring the sublime music of GF Handel.

What better way to spend an afternoon? Swoon to glorious music and fine wine in the idyllic setting of the Clover Hill Vineyard. Ten Days on the Island has assembled a stellar trio of singers to thrill audiences with the emotional power and vocal fireworks of opera from the Baroque era.

To complement our island landscape, soprano Sara MacIver, mezzo soprano Anna Dowsley, and bass-baritone Christopher Richardson will sing sublime arias and excerpts from Handel's magical and pastoral operas, including *Alcina*, *Orlando* and *Acis & Galatea*, and featuring Tasmania's own period instrument ensemble Van Diemen's Band, conducted by Benjamin Bayl, with staging by Lindy Hume.

T A S M A N I A

O P E R A I N C O N C E R T

28

SAT 16 MARCH
4.30PM
CLOVER HILL VINEYARD
LEBRINA



TICKETS
GENERAL ADMISSION
FREE

For premium seating and
priority service upgrade to
the Premium Opera Package

PREMIUM FULL \$89
PREMIUM CONCESSION \$80

TENDAYS.ORG.AU

CLOVER HILL
TASMANIA

 **SPIRIT OF
TASMANIA**

This series of truly epic human stories told in unexpected ways by extraordinary artists in intimate settings is scattered throughout the region. Intimate Epics brings vast themes - the Trojan Wars, the sweep of contemporary history, bloodshed and betrayal, and the spiritual mysteries of life and death - to surprising performance spaces.

INTIMATE EPICS



IMAGE: COURTESY OF THE ARTISTS

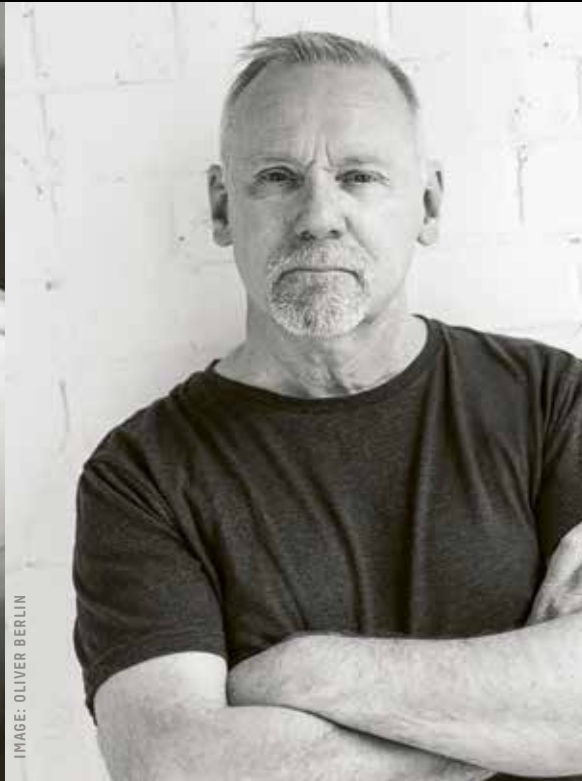


IMAGE: OLIVER BERLIN



IMAGE: PAUL McMILLAN

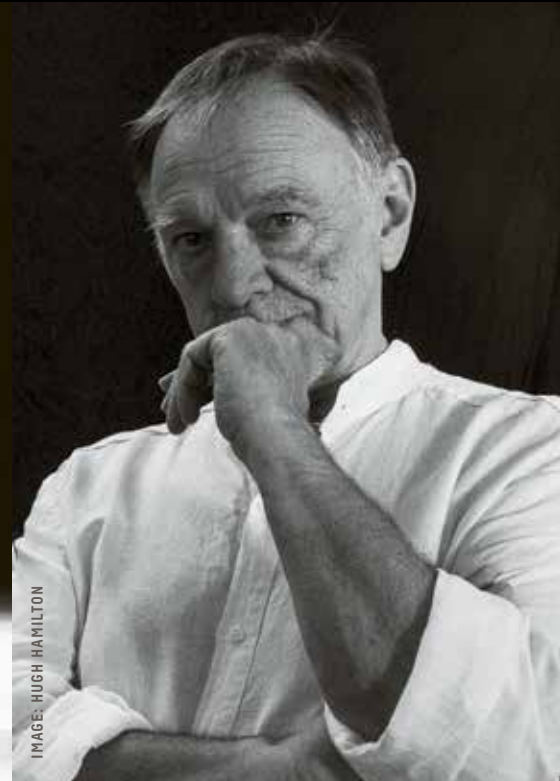


IMAGE: HUGH HAMILTON

VISUAL ARTS TASMANIA

Anna Gibbs, Elizabeth Day, Julie Gough
and Noeline Lucas

CRIME SCENE

15-17 MARCH 10AM-5PM
LONGFORD TOWN HALL



FREE

THEATRE TASMANIA

Robert Jarman BLUE COW THEATRE THE PROTECTING VEIL

15-17 MARCH
FRI & SAT 7.30PM, SAT & SUN 2PM
CYCLES @ THE EMPIRE, DELORAINÉ



TICKETS
FULL \$39
CONCESSION \$35

SUPPORTED BY



MUSIC UKRAINE | AUSTRALIA

Sonya Lifschitz STALIN'S PIANO

SAT 16 MARCH 8PM
GALLERY 9
DELORAINÉ
TENDAYS.ORG.AU FOR ACCESS INFORMATION

TICKETS
FULL \$49
CONCESSION \$44

SOLO READING GREECE | AUSTRALIA

William Zappa THE ILIAD OUT LOUD

PART ONE FRI 15 MARCH, 7.30PM
PART TWO SAT 16 MARCH, 7.30PM
PART THREE SUN 17 MARCH, 2PM
EVANDALE, ROSEVEARS & HADSPEN

TICKETS
FULL \$29, CONCESSION \$26
ALL THREE FULL \$65
ALL THREE CONCESSION \$58

GREEK MYTHOLOGY ROSEVEARS
RELIGION LONGFORD HADSPEN
MODERN GLOBAL HISTORY
DELORAIN TASMANIA'S DARK HISTORY EVANDALE

CRIME SCENE

ARTISTS Anna Gibbs, Elizabeth Day,
Julie Gough and Noelene Lucas

Tasmania's vicious colonial past is laid bare in a raw and riveting expose of historical murders as four Tasmanian artists spotlight brutal killings in and around the now sleepy town of Longford. Within the peaceful heritage Town Hall, the tale of each grisly murder is projected onto a forensic tent alongside crime scene evidence. This interactive exhibition resurrects a frontier world of capital punishment, Aboriginal dispossession, bushranger thuggery and drunken violence. A powerful opportunity for an open and honest investigation into Tasmania's dark and troubled past.

THE PROTECTING VEIL

CREATOR/PERFORMER
Robert Jarman
MUSICIAN David Malone

Reflecting on religion, life, death and the importance of tea and cake, Tasmania's living theatre treasure Robert Jarman returns with his latest solo show about the power of ritual in modern life. *The Protecting Veil* mixes the richness of the Catholic and Anglican traditions with a generous serve of gay sensibility and a dash of Renaissance Art History to explore how ceremonies help us all make sense of the passage of our fragile bodies from birth to death. With a maximum audience of 25, *The Protecting Veil* is a secular sacrament, a thoughtful ritual of community.

STALIN'S PIANO

COMPOSER Robert Davidson
PERFORMER Sonya Lifschitz

Praised by The New York Times and The Age for her "dynamic" and "powerful" performances, Ukrainian-born pianist Sonya Lifschitz is internationally recognised as one of Australia's most innovative and fiercely creative musical voices. Deftly synching virtuoso piano with texts from iconic creative and political figures like Bertolt Brecht, Goebbels, JFK, Ai Wei Wei, Stalin, Sontag, Julia Gillard and Trump, *Stalin's Piano* is a captivating - at times devastating, at times tender and humorous - tour de force weaving music, archival video footage and the performer's own speaking voice to explore big themes in modern history.

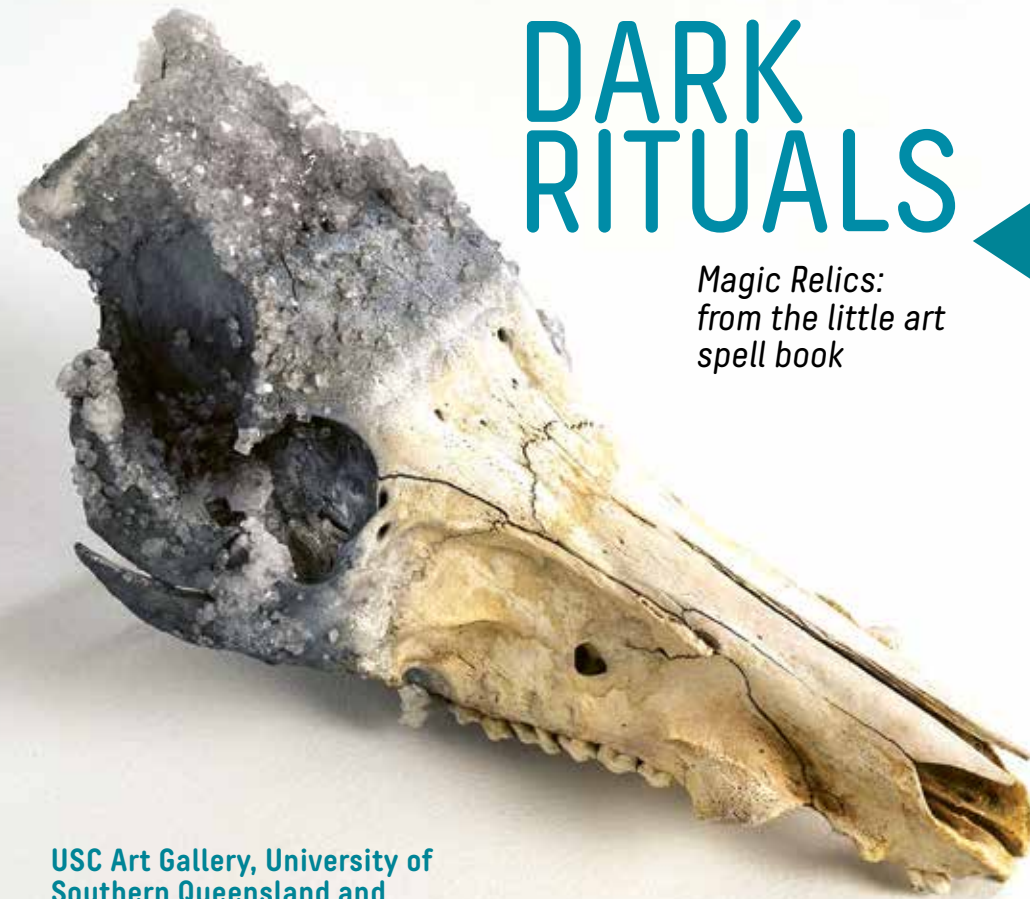
THE ILIAD OUT LOUD

WRITER/PERFORMER
William Zappa

The Iliad - Homer's forensic exploration of the battlefields of Troy - is the HBO series of the classics. Over 3000 years since *The Iliad* was first performed, the brilliant Australian actor and playwright William Zappa now thrillingly brings this epic poem back to life for modern audiences. In the tradition of oral storytelling, Zappa delivers a contemporary rhythmic adaptation that reveals once again the ancient themes of human folly and passion, the pain and brutality of war, and the meddling arrogance of the gods. Zappa presents *The Iliad Out Loud* as a solo reading in three parts, in three intimate settings across North East Tasmania.

DARK RITUALS

*Magic Relics:
from the little art
spell book*



SCULPTURE: ELLIE COLEMAN - LUCENT CREATURES 2018

USC Art Gallery, University of
Southern Queensland and
University of Tasmania presents

A U S T R A L I A | C A N A D A | N E W Z E A L A N D
V I S U A L A R T S

32

13 MARCH-5 APRIL
9AM-5PM WEEKDAYS
16-17 MARCH
1PM-5PM SAT & SUN
ACADEMY GALLERY
UNIVERSITY OF TASMANIA
LAUNCESTON



FREE



Deeply personal and whimsical, *Dark Rituals, Magic Relics* is an exhibition that feels like a waking dream. By delving into undercurrents of emotion, relationships, nature, power, culture and religion, seven extraordinary contemporary female artists from Australia, Canada and New Zealand infuse their artworks with folklore, fairytale, ritual and magic. This is a (literally) spellbinding and subversive experience, designed to draw you in and weird you out.

CURATORS

Dr Beata Batorowicz and Megan Williams

ARTISTS

Amalie Atkins, Margaret Baguley, Beata Batorowicz, Linda Clark, Ellie Coleman, Lisa Reihana and Susan Shantz

FAMILY WEEKEND

Whether it's venturing into the forest to catch a wolf with the Tasmanian Symphony Orchestra, travelling to the stars with the Russian witch who lives upstairs or even entering politics, there are adventures aplenty for every child and parent during Ten Days on the Island's special family friendly weekend for Launceston.

BUNDLE AND SAVE

Combine two family shows and save 10% on the second performance, or plan an epic weekend with the kids and save 15% on the third show. Visit tendays.org.au

A U S T R A L I A

M U S I C

Tasmanian Symphony Orchestra and Ten Days on the Island present

Madame Lark has a special knack of speaking to birds, and to children. Now she brings Prokofiev's classic children's tale to life. With music from the magical Tasmanian Symphony Orchestra, this traditional fable combined with Madame Lark's quirky storytelling style will have kids enthralled. Will Peter and his animal friends capture the wolf and save the day? Find out as your kids' love of the orchestra blossoms. Don't miss out on this delightful and ever popular family show.

THU 14 MARCH 4PM & 6PM
ALBERT HALL, LAUNCESTON
FRIDAY 15 MARCH 5PM
SCOTTSDALE PRIMARY SCHOOL
DURATION 50MINS
AGE RECOMMENDATION
6-12 YEARS OLD AND THEIR FAMILIES



TICKETS
ALL \$10
INFORMAL SEATING ARRANGEMENTS
SEE TENDAYS.ORG.AU FOR DETAILS
CONDUCTOR GREG STEPHENS
NARRATOR MADAME LARK (CHRISTINE JOHNSTON)



BELL BAY ALUMINIUM

PROKOFIEV'S CLASSIC
CHILDREN'S TALE

PETER AND THE WOLF

IMAGE: RUSSELL STOKES

16-17 MARCH
SAT 2.30PM
SUN 11AM & 2.30PM
EARL ARTS CENTRE
LAUNCESTON
DURATION 50MINS



TICKETS
FULL \$25
CONCESSION \$22.50

AGE RECOMMENDATION
7-12 YEARS OLD
AND THEIR FAMILIES

BY CHRISTINE JOHNSTON,
ROSEMARY MYERS AND
SHONA REPPE

Direct from a critically acclaimed season at the 2018 Edinburgh International Children's Festival, *Baba Yaga* is a spell-binding and entertaining retelling of a classic Russian fairytale.

Hilariously surreal and delightfully spooky: this is children's theatre at its very best, *Baba Yaga* is set in a retro-futuristic world where a wild and wacky witch (Australia's Christine Johnston) helps the quiet and timid Vaselina to break free from her fears and chase her dreams.

Packed with song, dance, jokes, crazy costumes and video projections *Baba Yaga* is a production with a big heart.

A U S T R A L I A | S C O T L A N D

T H E A T R E

"★★★★★ A brilliant new version of the alluring old Russian fairytale"

THE SCOTSMAN

Ten Days on the Island presents
WINDMILL THEATRE CO & IMAGINATE

b a b a y a g a

34

IMAGE: ROB MCDUGALL

By the children
for the children:
welcome to
the politics
of the future



IMAGE: SARAH WALKER

Ten Days on the Island presents

THE CHILDREN'S PARTY

A U S T R A L I A

T H E A T R E

16-17 MARCH
SAT & SUN 10.30AM & 2PM
CITY OF LAUNCESTON
TOWN HALL
DURATION 60MINS



TICKETS
FULL \$25
CONCESSION \$22.50

AGE RECOMMENDATION
7-12 YEARS OLD
AND THEIR FAMILIES

Graeme Wood
foundation

ALEX WALKER (HOUSE OF MUCHNESS) & BEN LANDAU

The Children's Party is a fun, safe and interactive theatre performance by a young cast determined to give 10 to 13 year-olds a voice in politics. Mini ministers and pint-sized polities can throw themselves into a whirlwind session of campaigning, speech making, voting and telling it like it is.

By the children for the children: welcome to the politics of the future. Forget face painting and icy pops, this children's party will knock your socks off. Australia's first child-led political party will stage a rabble-rousing town hall meeting that's all about giving children a voice.

*Come with us
to an island
called Nowhere*

Stompin presents

NOWHERE

T A S M A N I A D A N C E

13-17 MARCH

WED-SUN 6PM

SAT 1PM

AUDIENCE TO MEET AT QVMAG INVERESK CAR PARK
AT THE PERFORMANCE START TIME. AUDIENCE WILL
BOARD A BUS & BE TRANSPORTED TO THE LOCATION.

TICKETS

FULL \$30

CONCESSION \$25

TENDAYS.ORG.AU FOR ACCESS INFORMATION

IMAGE: JACOB COLLINGS, LUSY PRODUCTIONS



STOMPIN



SOUTH UT H

*Melding heritage and lifestyle with world class activities and attractions Tasmania's **South** is a capital place. Teetering on the edge of the continent, nestled in the heart of wilderness and bookended by the harbour and mountain, sits culturally confident and cool Hobart, a city rich with history, creativity and adventure.*

22-24 MARCH

IMAGE: TOURISM TASMANIA AND ROB BURNETT

WORLD PREMIERE

Stellar playwright Kate Mulvany and award-winning director Leticia Cáceres, two of Australia's most accomplished artists, evoke the visceral, blood-soaked biosphere of the Amazon warrior women of Greek mythology.

Tasmanian Theatre Company has assembled a dream team for the World Premiere of *The Mares* - a significant event in Australian theatre. Designed by Jill Munro and Nick Higgins, *The Mares* features an exceptional group of Tasmanian actors: Sara Cooper, Jane Johnson, Melissa King, Jane Longhurst and Ben Winspear.

This brutal, prescient and poetic new work has the wit, wry humour and gravitas we have come to expect from Kate Mulvany. It's a play for our times, exploring themes of power - physical, sexual and psychological - and weaving parallel narratives as it moves seamlessly through time, style and gender, galloping towards an unexpected yet inevitable climax.

Commissioned by Tasmanian Theatre Company.
Produced with the generous support of the Seaborn, Broughton and Walford Foundation.

T A S M A N I A

T H E A T R E

22-28 MARCH

FRI 22 MARCH 8PM (PREVIEW)

SAT 23 MARCH 2PM (PREVIEW) & 7.30PM

SUN 24 MARCH 2PM & 7.30PM

TUE 26-THU 28 MARCH 7.30PM

FRI 29 MARCH 8PM

SAT 30 MARCH 7.30PM

PEACOCK THEATRE

SALAMANCA ARTS CENTRE



TasmanianTheatreCo.



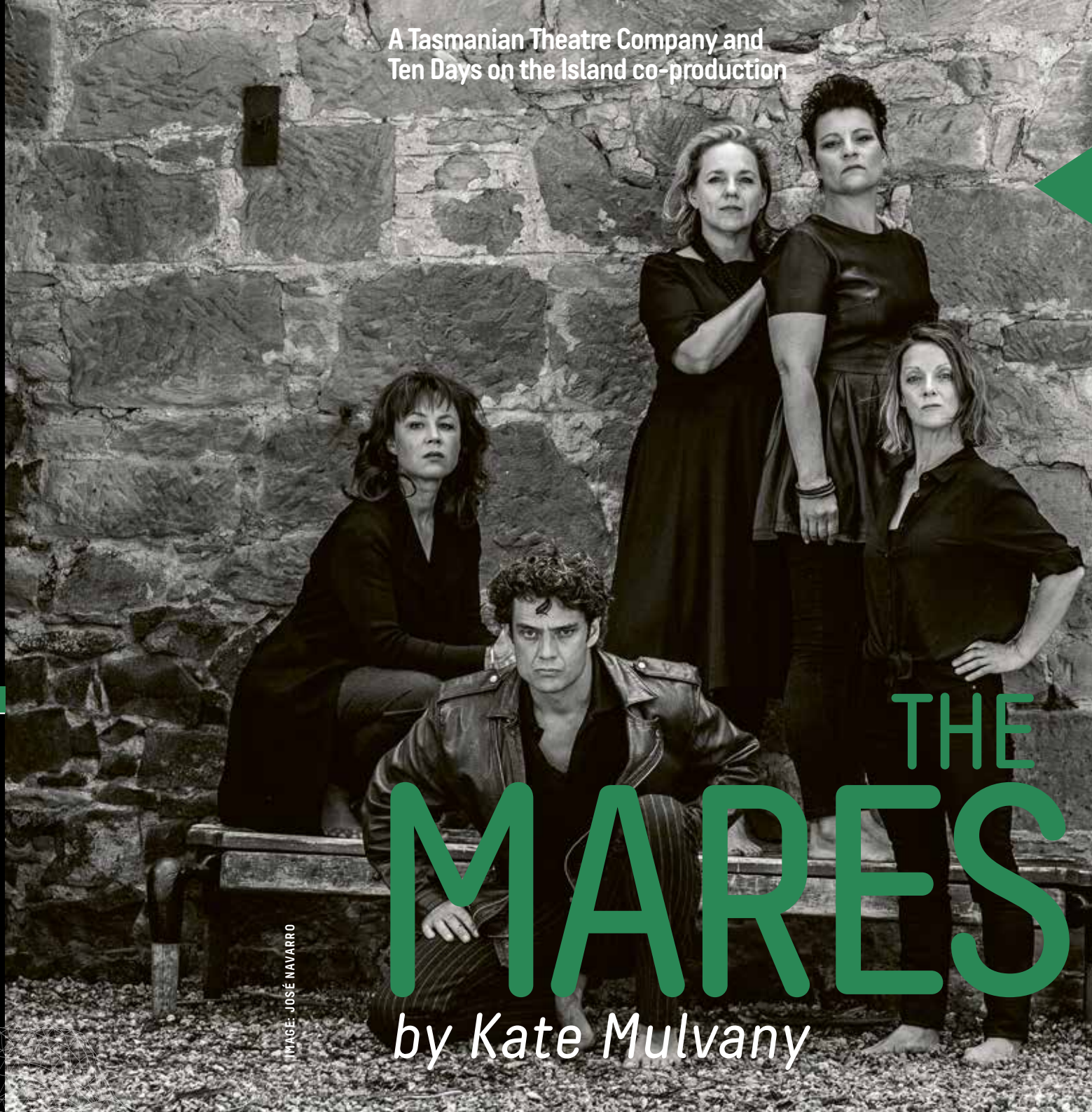
TICKETS

ADULTS \$52

SENIORS \$42

CONCESSION \$31

A Tasmanian Theatre Company and
Ten Days on the Island co-production



THE MARES

by Kate Mulvany

IMAGE: JOSÉ NAVARRO

*"Dust is a beguiling
and intriguing work...
it's a pleasure to watch
this work of delicate
beauty unfold"*

LIMELIGHT

Ten Days on the Island presents
Dancenorth with Liminal Spaces

DUST

A U S T R A L I A

D A N C E

A mesmerising study of human potential from Dancenorth, the new superstars of Australian contemporary dance. A World Premiere season, *Dust* is an intensely physical journey into the lottery of birth: how our backgrounds shape our responses to the challenges and chances of life. Surrender to this trance-like and audacious performance with dancers at the very top of their game. Played out against a beautifully designed and ever transforming set from Tasmania's own Liminal Spaces, with haunting live violin by Canada's Jessica Moss, this is a show you'll never forget.

22-24 MARCH
FRI & SUN 7PM
SAT 2PM
THE DON BOSCO
CREATIVE ARTS CENTRE
GLENORCHY
DURATION 70MINS



TICKETS
PREMIUM \$59
PREMIUM CONCESSION \$54
A RES \$49
A RES CONCESSION \$44



Australian Government
Major Festivals Initiative

SUPPORTED BY:

This project has been assisted by the Australian Government's Major Festivals Initiative, managed by the Australia Council, its arts funding and advisory body, in association with the Confederation of Australian International Arts Festivals Inc., Brisbane Festival, Sydney Festival, Ten Days on the Island, Riverside Theatres, Merrigong Theatre Company, Monash Academy of Performing Arts and Théâtre National de Chaillot.

IMAGE: AMBER HAINES



CITIZENSHIP
 EMPATHY
 TASMANIA
 CLIMATE CHANGE
 REGENERATION
 FIRST NATIONS
 SOVEREIGNTY
 CULTURE
 THE FUTURE
 WOMEN IN THEATRE
 LEADERSHIP
 PHILOSOPHY
 ISLANDNESS
 COMMUNITY
 SUSTAINABILITY
 INTIMATE
 COUNTER URBANISM
 TRANSCENDENCE
 COMPASSION
 SPIRITUALITY
 RESPECT
 EPIC
 JOURNEY
 ZEITGEIST
 INSPIRATION
 RESISTANCE
 ADVENTURE
 DIVERSITY
 WONDERMENT
 FEARLESSNESS
 TOLERANCE
 CONFIDENT
 HEARTLANDS

some other interesting conversations at Festival time

CELESTE CONNORS
18 MARCH
Hobart

ISLAND LEADERSHIP - Celeste Connors, Executive Director of Hawaii Green Growth and former Director of Climate Change and Environment, National Security Council at The White House (2008 - 2012) is in Tasmania to talk about Island leadership and how small places like Tasmania can have a big impact in charting a more sustainable path for Island earth.
WTF2050.ORG.AU

ART AND REGENERATION FORUM
23 MARCH
Willow Court, New Norfolk

Derwent Valley Arts presents a series of events and discussions curated across diverse locations in Willow Court, New Norfolk, including a community forum led by Dr Helen Norrie, Lecturer in Architecture and Design, UTAS on the influence of the built environment and the place of art within the Derwent Valley.
DERWENTVALLEYARTS.ORG

NAYRI NIARA GOOD SPIRIT FESTIVAL
9-11 MARCH
Bruny Island

A three-day gathering of music, ceremony, knowledge sharing and arts, held in the stunning cultural landscape of lunawunna alonnah, Bruny Island. The Festival is a powerful opportunity for Indigenous and non-Indigenous people to share knowledge and ceremony, honouring ancient traditions and contemporary innovation.
NAYRINIARAGOODSPIRIT.COM

FOR MORE TALKS IN YOUR AREA VISIT
TENDAYS.ORG.AU

Ten Days on the Island and
Salamanca Arts Centre present

What is Tasmania talking about?

T A S M A N I A

C O N V E R S A T I O N S

F R E E

'It is not merely compassion that is called for, but citizenship ...'

I think this quote from American author Sarah Sentilles perfectly articulates a critical social and artistic theme emerging in response to the turbulence and anxiety of our contemporary world, a zeitgeist gearshift from passive to active, from internalised to expressive, from the personal to the communal. Artists everywhere are making work that explicitly invites dialogue with audiences, and audiences are increasingly revelling in full participation, not just passive attendance. How might we express our citizenship in these troubling times? For citizens who yearn to gather, to discuss, to debate, to listen, talk and think, here are some enticing opportunities.

Lindy Hume

ARTISTIC DIRECTOR, TEN DAYS ON THE ISLAND

SAT 23 MARCH CONVERSATIONS WITH FESTIVAL ARTISTS

Founders Room, Salamanca Arts Centre

Artistic Director Lindy Hume discusses the creative process with Festival artists.

10.00AM WOMEN MAKING NEW AUSTRALIAN THEATRE

Discussion with theatre-makers in the national and local contexts.

11.15AM WHAT'S BEHIND A WORLD PREMIERE?

Discussion with the creative team of Kate Mulvany's new play *The Mares*.

1.00PM CONTEMPORARY DANCE AND PHILOSOPHY - AN UNLIKELY ALLIANCE?

A conversation with Kyle Page, creator of *Dust* and Artistic Director of Dancenorth.

2.15PM ARTISTS AS CITIZENS - WHAT CAN WE DO?

Discussion with Festival artists on the role of art in an empathetic society.

SUN 24 MARCH TOWARDS TEN DAYS ON THE ISLAND 2021

Hobart Town Hall

On the last day of the Festival these two dynamic panels set some challenges for Ten Days on the Island to tackle between this Festival and the next in 2021.

10.00AM THE STATE OF PLAY - THE FUTURE OF PERFORMANCE IN TASMANIA

Tasmania's performing arts leaders on the potential of theatre-making in Tasmania.

12.00PM FIRST NATIONS CULTURAL LEADERS - IDEAS, INSPIRATION, PATHWAYS FORWARD

In the final discussion of the Festival, Producer and Cultural Practitioner Sinsa Mansell leads a distinguished panel in a conversation on themes for the next generation of First Nations creative leaders in Tasmania.



Salamanca Arts Centre and Ten Days on the Island present
Riitta Ikonen and Karoline Hjorth

EYES AS BIG AS PLATES

IMAGE: HJORTH IKONEN, EYES AS BIG AS PLATES AGNES II, NORWAY, 2011

FINLAND | NORWAY
VISUAL ARTS

46

A photographic celebration of everyday elderly people transformed into timeless mythical beings. In a sweeping series of large scale images, solitary figures appear cloaked in sculptures of organic materials, blending into unknown landscapes.

It's completely weird and wonderful. Already an internet sensation, Scandinavian sorcerers Ikonen and Hjorth fuse folklore and photography to ask giant questions about ageing and our relationship to nature.

Featuring new work from Tasmania alongside images from across the globe, *Eyes as Big as Plates* is sure to be a Festival favourite.

8-24 MARCH
10AM-4PM
LONG GALLERY
SALAMANCA ARTS CENTRE
HOBART



FREE



OneCare
FOR SUPPORT, SECURITY & INDEPENDENCE... YOUR HOME



Australian Government
Regional Arts Fund

This project was made possible by the Australian Government's Regional Arts Fund, which supports the arts in regional and remote Australia.

This intimate series showcases the extraordinary virtuosity of pianists Sonya Lifschitz, Paul Grabowsky and Alex Raineri, who are joined by three equally brilliant creative collaborators – performance artist Christine Johnston, singer-songwriter Lior and author-conductor Paul Kildea. This dazzling group of artists offer solo and collaborative performances spanning several centuries and multiple genres.

Catch one or two concerts per evening, perhaps enjoy a glass of Tasmanian wine in between, as you explore the relaxed environment of the historic Rosny Barn precinct.

SOLOS

FRI 22 MARCH

ALEX RAINERI 6PM

PAUL GRABOWSKY 8pm

Two solo programs could not be more different! The first spans Schumann, Beethoven and Mozart while in the other an 'inner conversation' shapes a program of personal jazz favourites.

COLLABORATIONS

SAT 23 MARCH

SONYA LIFSCHITZ & CHRISTINE JOHNSTON

ABOVE/BELOW 6PM

PAUL GRABOWSKY & LIOR 8PM

Four extraordinary Australian performers intertwine individual artistry and shared expression; words and music become a beguiling dialogue.

HISTORIES

SUN 24 MARCH

SONYA LIFSCHITZ STALIN'S PIANO 5PM

Sonya Lifschitz's collaboration with composer Robert Davidson is a recital like no other. An exploration of big themes in modern history, it deploys virtuoso piano deftly synched with texts from iconic creative and political figures, archival video footage and spoken word.

ALEX RAINERI & PAUL KILDEA CHOPIN'S PIANO 7PM

Chopin's Piano: A Journey Through Romanticism follows the turbulent life and mysterious disappearance of the modest piano upon which Chopin composed his 24 Preludes, Op. 28. In this shared recital, Paul Kildea tells the story of this remarkable instrument, punctuated by a performance by Alex Raineri of the extraordinary Preludes.

TENDAYS.ORG.AU FOR THE FULL PROGRAM

THE BARN AT ROSNY FARM 

PREMIUM \$69

PREMIUM CONC \$62

FULL \$49

CONCESSION \$44

DURATION 60MINS

TWO SHOWS IN AN EVENING \$80
PREMIUM WEEKEND BUNDLE \$330

TENDAYS.ORG.AU

ALEX RAINERI

PAUL GRABOWSKY AO

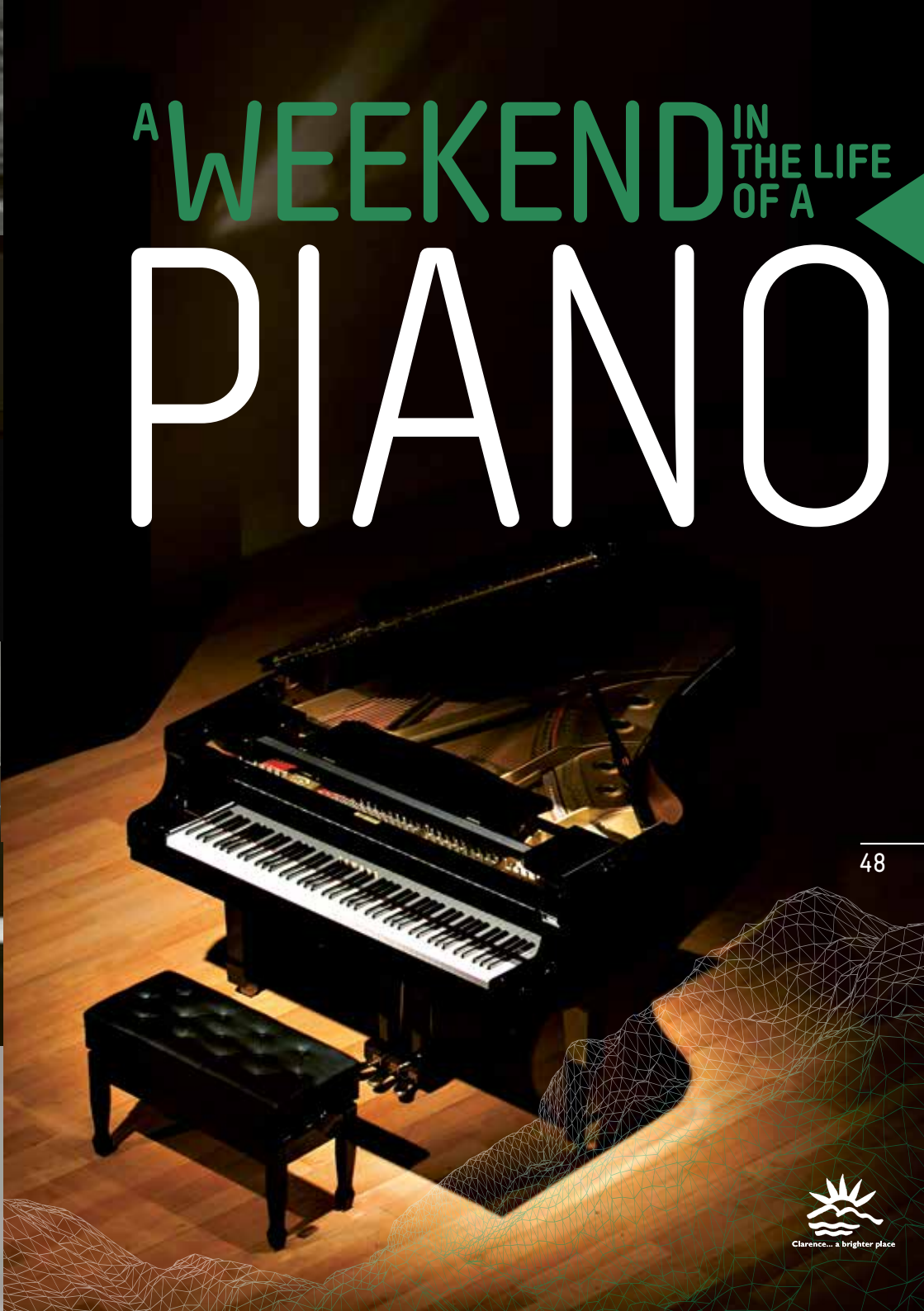
CHRISTINE JOHNSTON

PAUL GRABOWSKY & LIOR

SONYA LIFSCHITZ

PAUL KILDEA

A WEEKEND IN THE LIFE OF A PIANO



"The songs shiver with a haunting beauty that verges on ambient art rock, while echoes of Sibelius can be heard on the rippling harmonies and tugging emotional power..."

THE AUSTRALIAN ★★★★★

In a world of conflict and division, this profound performance draws on ancient wisdom to offer a timely message of love and hope. Sung in Hebrew and Arabic, *Compassion* fuses the achingly beautiful voice of Lior and the transcendent mastery of award-winning composer Nigel Westlake with the sublime power of our very own Tasmanian Symphony Orchestra.

See for yourself why *Compassion* is garnering rave reviews and striking such a deep chord with audiences around Australia and the world. Hold on to your hearts - this will be one of the year's most deeply moving and inspiring musical performances, and tickets will sell fast.

FRI 22 MARCH
7.30PM
FEDERATION CONCERT HALL
HOBART
DURATION 70MINS



TICKETS
A RES \$79/\$72
B RES \$69/\$63
C RES \$49/\$44
D RES \$39

TICKET BUNDLE FOR
BREATH-taking AND
COMPASSION \$118

Ten Days on the Island and
Tasmanian Symphony Orchestra present

A U S T R A L I A

M U S I C

NIGEL WESTLAKE & LIOR

COMPASSION

IMAGE: KEN BUTTI





A voice and a
cornetto entwined
VAN DIEMEN'S BAND

BREATHTAKING

ITALY | CZECH REPUBLIC | AUSTRALIA

MUSIC

This concert featuring two global baroque virtuosos is a rare and precious gem: quite literally, a breathtaking performance from a bygone age. In the 16th and 17th centuries, the cornetto was famed for its astonishing ability to imitate the human voice. Czech soprano Hana Blažíková is a rising star of the early music scene. She joins Bruce Dickey, the cornetto virtuoso of our epoch, in a thrilling instrumental-vocal pairing supported by Tasmania's early music specialists, Van Diemen's Band.

Imagine yourself in the Royal Courts of Renaissance Europe as this lush musical experience unfolds in two very different iconic settings - Hobart's neo-Gothic St David's Cathedral and the raw industrial atmosphere of Spring Bay Mill, Triabunna.



IMAGE: ALASTAIR BETT & RAY JOYCE

FRI 22 MARCH 6PM
ST DAVID'S CATHEDRAL, HOBART
TICKETS
PREMIUM \$60
PARTIALLY OBSTRUCTED VIEW
FULL \$50 CONCESSION \$40

TICKET BUNDLE FOR
BREATHTAKING AND
COMPASSION \$118

SAT 23 MARCH 2PM
SPRING BAY MILL, TRIABUNNA
TICKETS
FULL \$45 CONCESSION \$35
DURATION 60MINS



Prepare for an unforgettable and otherworldly experience...

Božo Vrećo is electrifying audiences around the world with performances of raw emotion, soaring vocals and gender-blurring bravado.

The Bosnian singing sensation is coming to Tasmania for one show only — an intoxicating and deeply vulnerable performance blending Bosnia's traditional folk music Sevdah with pop, carnival, and dance. Limited tickets will be available for this intensely intimate, one-off event inside Mona's stunning Nolan Gallery.

BOSNIA AND HERZEGOVINA

MUSIC

Ten Days on the Island
and MONA present

BOŽO VREĆO

SUN 24 MARCH
8:30PM
NOLAN GALLERY
MONA, BERRIEDALE
DURATION 75MINS

TICKETS
FULL \$49
CONCESSION \$44



MONA

IMAGE: MARIO KLEIN

Re-live the horror of the 1919 Spanish Flu in this searing art-meets-science exhibition that shines a spotlight on modern attitudes to disease. *Pandemic* features powerful contemporary art including a ceramic installation about breast cancer where viewers can take away pieces of the work and an immersive light show depicting the destructive beauty of human viruses magnified one billion times.

Combining Tasmanian archival material from the 1919 pandemic with current immunology and disease control resources, *Pandemic* invites sincere dialogue around the current pro and anti-vaccination debate. A deeply moving and utterly infectious exploration of contagions.

22 MARCH-13 MAY
WED-SUN 12PM-5PM
PLIMSOLL GALLERY
SCHOOL OF CREATIVE ARTS
UNIVERSITY OF TASMANIA
HOBART



FREE

PANDEMIC

University of Tasmania presents



IMAGE: BEN TUPAS

A U S T R A L I A
V I S U A L A R T S



UNIVERSITY of
TASMANIA



IMAGE: LIESEL ZINK

A U S T R A L I A

D A N C E

THE STANCE

This monumental dance and sound performance investigates the choreography of bodies in protest. Performed across Australia, Asia and Europe, this latest iteration will interweave the voices of young Tasmanians into movement and sound, creating a powerful and moving experience. An ensemble of Tasmanian dancers will occupy public space and perform to live music transmitted through wireless headsets.

Inspired by recent protests led by young Australians, *The Stance* questions what it means to put your body on the line for something you believe in. Both highly political and physically demanding, this imposing act of endurance channels the history of public protest and recent acts of global activism.

Audiences are invited to view the work at any point during the two-and-a-half-hour duration.

DRILL
CHOREOGRAPHER
LIESEL ZINK


54

SAT 23 MARCH
10AM-12.30PM
ELIZABETH ST MALL
HOBART



FREE

TICKETING INFORMATION & OUTLETS

Ticketing for Ten Days on the Island is powered by 

PURCHASING TICKETS

The quickest and easiest way to purchase tickets is online through:

tendays.org.au

Tickets for all performances can also be purchased in person from any of our outlets:

BURNIE ARTS & FUNCTION CENTRE

(03) 6430 5850
77-79 Wilmot Street, Burnie

THEATRE NORTH AT THE PRINCESS

(03) 6323 3666
57 Brisbane Street, Launceston

THEATRE ROYAL

(03) 6146 3300
Currently located at the Tasmanian Museum and Art Gallery
Dunn Place, Hobart

Tickets may be purchased over the phone:

TEN DAYS ON THE ISLAND

(03) 6210 5777

Tickets to selected events only can be purchased at the following venues:

TASMANIAN SYMPHONY ORCHESTRA

Only selling for Peter and the Wolf
(03) 6232 4450 Federation Concert Hall
1 Davey Street, Hobart

VENUE INFORMATION

Visit **tendays.org.au** for access information, venue addresses and parking information.



FEES AND CHARGES

All prices are stated in Australian Dollars and include booking fees and GST where applicable.

REFUNDS/EXCHANGES

Please check your booking carefully at the time of purchase, as all sales are final and cannot be refunded or exchanged after purchase. Ten Days on the Island is a member of Live Performance Australia and adheres to the Live Performance Australia Ticketing Code of Practice.

TICKET DELIVERY

Ticket postage is subject to a \$3.00 postage and handling fee. We are able to offer printable Tickets@Home delivery for certain performances. You are responsible for printing Tickets@Home. Tickets presented on a mobile device may not always be sufficient. If you choose to collect your tickets at the performance venue, please ensure you arrive with ample time. General admission tickets do not have allocated seating and cannot be replaced if lost or stolen.

CHILD, CONCESSION, AND FAMILY TICKETS

Children 12 years and under are entitled to tickets at the child price where available. Concession tickets are available for the following: full-time students, health-care card holders, pensioners, seniors and children 12 years and under where there is no child price available. Proof of concession must be provided at the time of purchase, collection or upon entry to the performance. Family tickets, where available, include four people, at least two of whom must be children.

COMPANION CARDS

Ten Days on the Island accepts Companion Cards for all performances. A valid Companion Card or Companion Card number must be produced at the time of booking.

ACCESSIBILITY

Venues that are accessible to wheelchair users and patrons with access requirements are marked on each event page of the brochure. Further access information for each venue is available on **tendays.org.au**. To purchase accessible seating for ticketed performances, please call Ten Days on the Island on (03) 6210 5777.

PROGRAM DETAILS

The Ten Days on the Island Festival 2019 program of events is correct at the time of printing. In the event of a performance cancellation, every effort will be made to inform ticket holders, but please ensure you check the website on the day of a performance. Ten Days on the Island collects your information in case of an event cancellation or amendment. If you fail to supply sufficient contact details, Ten Days on the Island is not responsible for failure to contact you.

LATECOMERS

Latecomers will be admitted to a performance during a suitable break at the discretion of venue management. Please note that, for some events, latecomers may not be admitted at all.

TECHNOLOGY

Cameras and other recording devices are strictly prohibited in performance venues unless otherwise advertised. Mobile phones and other devices must be switched off upon entry to the venue.

THANK YOU

FESTIVAL PARTNER



PROGRAM PARTNERS



PRODUCTION PARTNERS



SUPPORTERS



BELL BAY ALUMINIUM



ACCOMMODATION PARTNERS



VENUE PARTNERS



MEDIA PARTNERS



ARTS PARTNERS



THANK YOU

Ten Days on the Island acknowledges the strong support and financial contribution of the Tasmanian Government through Arts Tasmania by the Minister for the Arts.



PHILANTHROPY

Ten Days on the Island warmly thanks the philanthropic foundations which make a valued contribution to our Festival:

Jin-Gang-Dhyana Wang Xin De Foundation



WD Booth Charitable Trust



Graeme Wood Foundation



FRRR



Ten Days is most grateful to the wonderful individual donors who support our work:

Paul & Bronwen Roberts-Thomson
Saul Eslake
Gillian Miles
Julia Farrell
Alistair & Devon Cruickshank
Jane Haley
Sir Guy & Lady Rosslyn Green

If you would like to make a tax-deductible gift to Ten Days on the Island talk to our people or donate online tendays.org.au

MEET THE TEAM

PATRON

Sir Guy Green

BOARD OF DIRECTORS

Saul Eslake, Chair
Jacqui Allen
Angela Driver (from Nov 17)
Noel Frankham
Stephanie Jaensch
Jenny-Ellen Kennedy (till May 18)
Roslyn MacAllan
Alex McKenzie (from July 18)
Gillian Miles
David Palmer

TEAM

Jane Haley - CEO
Lindy Hume - Artistic Director
Vernon Guest - Creative Producer
Bede Clifton - Head of Marketing & Communications
Jane Forrest - Manager Partnerships & Engagement (till Nov 18)
Magdalena Lane - Strategy Adviser Private Giving
Carolyn Watson-Paul - Producer Content & Publications
Jessica Flynn - Marketing & Partnerships Coordinator (from Oct 18)
Claire Elliott - Marketing & Partnerships Coordinator (till Oct 18)
Morgan Barnsley - Ticketing Services Manager (Dec 18)
Tim Cooper - Ticketing Services Manager (from Dec 18)
Simon Rush - Head of Production
Kylie Rogerson - Program Manager
Josh Cook - Program Coordinator
Christian Storan - Technical Manager
Rob Dyball - Logistics Manager
Charles Murdock - Finance & Administration Manager (till Sep 18)
Clare Spillman - Administration Manager (from Sep 18)
George Austin - Finance Manager (from Sep 18)

At the time of printing this brochure many of the people who make the Festival possible are yet to be working with us at Ten Days ... to all of you, a huge thank you in advance!

CONTRACT EXPERTS

Ty Bukewitsch - Brand Design
Effective Naturally - Social Media
GM Consulting - Ticketing Review
Stefan Treyvaud - Marketing Review
Leigh Arnold - Copywriter
Joanne Macgill - Finance
Louise Blaik - Bookkeeping

VOLUNTEERS

Thanks for your help in the Ten Days on the Island office, at events and on the road all around Tasmania - we really could not do it without you!

If you'd like to volunteer, go to tendays.org.au and register your interest.

FESTIVAL PLANNER

WEEKEND ONE

FESTIVAL PLANNER		FRI 8	SAT 9	SUN 10	MON 11
ACOUSTIC LIFE OF SHEDS p9-10	ILLUME, BOAT HARBOUR	9.45AM 6 11.45AM	9.45AM 6 11.45AM	9.45AM 6 11.45AM	9.45AM 6 11.45AM
BUSHLAND p21-22	CRADLE MT WILDERNESS GALLERY	10AM-5.20PM	10AM-5.20PM	10AM-5.20PM	10AM-5.20PM
HERE SHE IS p8	DEVONPORT REGIONAL GALLERY	9AM-4.45PM	9AM-2PM	9AM-2PM	9AM-2PM
IN PURSUIT OF VENUS (INFECTED) p11-12	APPM SERVICES BUILDING, BURNIE	11AM-7PM	11AM-7PM	11AM-7PM	11AM-7PM
LOLA GREENO p20	MAKERS' WORKSHOP, BURNIE	9AM-5PM	9AM-5PM	9AM-5PM	9AM-5PM
mapali p7-8	DEVONPORT SURF LIFE SAVING CLUB	7AM			
OUT OF CHAOS... p15-16	BURNIE ARTS THEATRE, BURNIE		7.30PM	2PM	2PM
PROSTHETIC REALITY p13	BURNIE REGIONAL ART GALLERY	10AM-4.30PM	10AM-3PM	10AM-3PM	10AM-3PM
SHOREWELL PRESENTS p14	SHOREWELL PARK	6.30PM			
THE NIGHTINGALE AND THE ROSE p19	DEVONPORT REGIONAL GALLERY				
WOMEN OF THE ISLAND p17-18	GAIETY THEATRE, ZEEHAN	7.30PM			
WOMEN OF THE ISLAND p17-18	STANLEY TOWN HALL, STANLEY		7.30PM		
BABA YAGA p34	EARL ARTS CENTRE				
BUSHLAND p21-22	CATARACT GORGE RESERVE				
CRIME SCENE p29	LONGFORD TOWN HALL				
DARK RITUALS p32	ACADEMY GALLERY, INVERESK				
NOWHERE p36	QVMAG, INVERESK				
PETER AND THE WOLF p33	SCOTTSDALE PRIMARY, SCOTTSDALE				
THE CHILDREN'S PARTY p35	CITY OF LAUNCESTON TOWN HALL				
THE ENCHANTED ISLAND p27-28	CLOVER HILL VINEYARD				
THE ILIAD OUT LOUD p30	VARIOUS LOCATIONS				
THE PROTECTING VEIL p29	CYCLES @ THE EMPIRE				
STALIN'S PIANO p30	GALLERY 9, DELORAINÉ				
SUPER NIGHT SHOT p25-26	EARL ARTS CENTRE				
WOMEN OF THE ISLAND p17-18	EXETER SHOWGROUNDS HALL				
WOMEN OF THE ISLAND p17-18	DESIGN CENTRE, LAUNCESTON				
A WEEKEND IN THE LIFE OF A PIANO p47	ROSNY BARN				
BOŽO VREČO p 52	NOLAN GALLERY, MONA				
BUSHLAND p21-22	THE SPRINGS, MT WELLINGTON				
BREATH TAKING p51	ST DAVID'S CATHEDRAL				
BREATH TAKING p51	SPRING BAY MILL				
COMPASSION p49-50	FEDERATION CONCERT HALL				
DUST p41-42	THE DON BOSCO ARTS CENTRE				
EYES AS BIG AS PLATES p45-46	SALAMANCA ARTS CENTRE	10AM-4PM	10AM-4PM	10AM-4PM	10AM-4PM
PANDEMIC p53	PLIMSOLL GALLERY				
THE MARES p39-40	PEACOCK THEATRE				
THE STANCE p54	ELIZABETH STREET MALL				
WOMEN OF THE ISLAND p17-18	HOBART TOWN HALL				

WEEKEND TWO

FRI 15	SAT 16	SUN 17
11AM-7PM	11AM-7PM	11AM-7PM
9AM-5PM	9AM-5PM	9AM-5PM
10AM-4.30PM	1.30PM-4PM	1.30PM-4PM
9AM-4.45PM	9AM-2PM	9AM-2PM
	2.30pm	11AM & 2.30PM
10AM-5.20PM	10AM-5.20PM	10AM-5.20PM
10AM-5PM	10AM-5PM	10AM-5PM
9AM-5PM	1PM-5PM	1PM-5PM
6PM	1PM & 6PM	6PM
5PM		
	10.30AM & 2PM	10.30AM & 2PM
	4.30PM	
7.30PM	7.30PM	2PM
7.30PM	2PM & 7.30PM	2PM
	8PM	
8.30PM	8.30PM	8PM
7.30PM		
	7.30PM	
10AM-4PM	10AM-4PM	10AM-4PM

WEEKEND THREE

FRI 22	SAT 23	SUN 24
11AM-7PM	11AM-7PM	11AM-7PM
9AM-5PM	9AM-5PM	9AM-5PM
10AM-4.30PM	1.30PM-4PM	1.30PM-4PM
9AM-4.45PM	9AM-2PM	9AM-2PM
9AM-5PM		
6PM & 8PM	6PM & 8PM	5PM & 7PM
		8.30PM
10AM-5.20PM	10AM-5.20PM	10AM-5.20PM
6PM		
	2PM	
7.30PM		
7PM	2PM	7PM
10AM-4PM	10AM-4PM	10AM-4PM
12PM-5PM	12PM-5PM	12PM-5PM
8PM	2PM & 7.30PM	2PM & 7.30PM
	10AM-12.30PM	
	7.30PM	2PM

NW

NE

S

PLAN YOUR EPIC ADVENTURE